

COUNCIL AGENDA

March 16, 2021 ★ 6:30 p.m.



317 South Washington ★ Wellington, Kansas 67152

I. CALL TO ORDER

II. PLEDGE OF ALLEGIANCE

III. INVOCATION

IV. ROLL CALL

V. AUDIENCE PARTICIPATION

- 1) Flag Design Announcement – City Manager Shields and Chamber of Commerce Director Earl

VI. CONSENT AGENDA

A. APPROVAL OF MINUTES

- 1) Regular Session of March 2, 2021

B. APPROVAL OF APPROPRIATIONS

- 1) Payroll Report for February 14 – 27, 2021
- 2) Claims Register for March 1 – 14, 2021

C. RECEIPT OF COUNCIL CORRESPONDENCE

- 1) Clerk's Report for February 2021
- 2) Electric, Waterworks, Sewage Utility Operating Report for February 2021
- 3) Police Activity Report for February 2021
- 4) Ambulance Monthly Financial Report for February 2021
- 5) FIRE/EMS Activities/Overtime/Revenue Report for February 2021
- 6) Building/Demo Permit Report for February 2021
- 7) Code Enforcement Report for February 2021
- 8) Park Board Minutes for February 8, 2021
- 9) Essay Contest for 7th Graders: "My City, My Home" League of Kansas Municipalities (LKM)

VII. REPORTS OF MAYOR AND COUNCIL

VIII. REPORTS OF CITY OFFICIALS

- 1) Utility Service Type Change Request from American Legion Post 90 – City Manager Shields
- 2) Utility Update – City Manager Shields

IX. PUBLIC HEARING

X. ORDINANCES

- 1) A CHARTER ORDINANCE OF THE CITY OF WELLINGTON, KANSAS EXEMPTING THE CITY FROM THE PROVISIONS OF K.S.A. 12-621 RELATING TO SEWAGE DISPOSAL WORKS IMPROVEMENTS AND THE ISSUANCE OF BONDS THEREFOR AND PROVIDING SUBSTITUTE AND ADDITIONAL PROVISIONS RELATING THERETO.
- 2) AN ORDINANCE CHANGING THE BOUNDARIES OF THE ZONING DISTRICT AND AMENDING THE ZONING MAP AS ADOPTED BY ORDINANCE NO. 3826
- 3) AN ORDINANCE REPEALING CURRENT WELLINGTON LAKE RECREATION AREA REGULATIONS AND ORDINANCES AND ENACTING NEW REGULATIONS

XI. RESOLUTIONS

- 1) A RESOLUTION ADOPTING AND DECLARING THE OFFICIAL FLAG FOR THE CITY OF WELLINGTON, KANSAS
- 2) A RESOLUTION AUTHORIZING THE CITY MANAGER TO EXECUTE AN AGREEMENT WITH ASCENSION VIA CHRISTI HOSPITALS WICHITA, INC. FOR EMS TRANSPORTATION SERVICES.

- 3) A RESOLUTION AUTHORIZING THE CITY MANAGER TO EXECUTE A PROFESSIONAL SERVICES AGREEMENT WITH RANSON FINANCIAL GROUP, LLC OF WICHITA, KANSAS, TO PROVIDE DOOR-TO-DOOR SURVEY SERVICES FOR A FEE NOT TO EXCEED \$12,500 AS WELL AS CDBG GRANT PREPARATION AND KDHE STATE REVOLVING FUND (SRF) LOAN APPLICATION/ADMINISTRATION SERVICES TO THE CITY OF WELLINGTON, KANSAS IN AN AMOUNT NOT TO EXCEED \$7,500.
- 4) A RESOLUTION DECLARING CERTAIN BLOCKS IN PRAIRIE LAWN CEMETERY IN THE CITY OF WELLINGTON, KANSAS OPEN FOR SALE TO AND USE BY THE PUBLIC.

XII. STUDY ITEMS

XIII. EXECUTIVE SESSION

FUTURE AGENDA ITEMS

4/6 Special Drug & Alcohol Advisory Board Allocation Recommendations

ADJOURN



Memorandum

To: Honorable Mayor and Council

From: Shane J. Shields, City Manager
Valerie Earl, Executive Director, Wellington Area Chamber of Commerce/CVB

Date: March 12, 2021

Re: Official City Flag

At the direction of the City Council, the City and Chamber sponsored a Wellington Flag Project to design a City flag that would serve as a symbol of the past, present and future of our community. City and Chamber staff researched the process used by a number of other Kansas cities for selecting and adopting an official City flag. The final process determined was, for the most part, modeled after the City of Newton's process. The intended timeline was to have a City flag to coincide with the City's Sesquicentennial Celebration for 2021.

The contest was opened for the submittal of design entries for the month of October 2020. A total of 49 entries were received. A 3 member volunteer citizen panel served as a review panel to eliminate any designs that did not adhere to the design principles and guidelines. After that elimination, 29 entries then proceeded to a public input period where the public could select up to 10 favorite designs. The top 10 selected designs were then provided to a 7 member volunteer citizen selection committee. The committee met for an initial review of the top 10 entries, studied the entries for a period of time and met again to further review and discuss. The committee selected a winning design from the top 10. A few comments from committee members about the design selected was that it was modern, showed movement, displayed school colors, and members expressed that the silver or grey color is unique for a flag.

The winning flag project design was revealed during the Chamber's 2021 Virtual Annual Celebration released on March 4. Shayna Templeton designed the winning entry. Shayna is a 2015 graduate of Wellington High School. She will receive a \$500.00 cash prize for her winning design.

As per the Flag Project process, once a design was selected as the winner, the City Council would be asked to adopt the design as the City's official flag. A Resolution is included later in the agenda for Council's consideration.

The design will be in the public domain and available for all to use.

WELLINGTON CITY FLAG



The flag design is symbolic of Wellington's history. Agriculture, specifically the growing of wheat, has a long and important history in the area. Wellington is the county seat of Sumner County, and the area is known for the abundance of wheat grown every year. The wheat stalks represent the "Wheat Capital of the World", the title Wellington and Sumner County has become known through the years. The wheat stalks are stylized to represent the railway that was important to Wellington in its early years.

According to history, the first railway was a Santa Fe extension known as the "Cowley, Sumner, and Fort Smith Railway Company" and opened in 1879. The first locomotive reached Wellington on September 8, 1879. In 1888, "The Chicago, Kansas, and Nebraska Railroad" completed a line through Wellington. The first train reached Wellington on November 10, 1887. Both rail lines still exist in Wellington. A transcontinental line of the Burlington Northern Santa Fe passes through with Wellington as a crew switch point. A main north-south line of the Union Pacific Railroad runs through the city. There is also a line of the Southern Kansas and Oklahoma Railway entering Wellington from the south.

The color scheme of red, silver, and white shows off Wellington school pride. An important history note is that Wellington was the first city to play a high school football game under permanently installed lights. The game was played on the night of September 20, 1929, with over 4,000 spectators witnessing Wellington battle Blackwell, Oklahoma. Football remains an important part of Wellington school pride as does all the activities and sports at Wellington High School.

The Council of the City of Wellington, Kansas, met in Regular Session on March 2, 2021 at 6:30 p.m., in the City Council Room, City Administration Center, with Mayor Jim Valentine presiding.

The Pledge of Allegiance was led by Mayor Jim Valentine.

The Invocation was given by Reverend Isaiah Chua of First United Methodist Church.

Council members Robert Hamilton, Guy Leitch, Jennifer Heersche, Kevin Dodds, Joe Soria, and Mike Westmoreland were present at roll call.

Members of the Staff present were City Manager Shane Shields, Assistant City Manager of Utilities/IT Jason Newberry, City Clerk/Finance Director Heidi Theurer, City Attorney Shawn DeJarnett, Public Works Director Jeremy Jones, Airport Manager Matt Wiebe, and Park Supervisor Seth Henton.

AUDIENCE PARTICIPATION

Employee Commendations – Water Distribution. City Manager Shields introduced the Water Department personnel including William Staley, Trevor Nance, Levi Conrad, Austin Kogle, and Blaine Anderson. He noted that most all city departments were impacted by the recent arctic blast and staff responded commendably. Water Distribution was likely the most severely impacted and for days after the event. Assistant City Manager of Utilities/IT Newberry shared that this group of employees went above and beyond. They responded to over 20 main breaks in 8 to 10 days and often worked all night in frigid temperatures. He acknowledged Bill Kane from the Electric Department, who not present, also stepped up and turned approximately 90% of water meters on and off during the breaks and repairs. Mayor Valentine commended the employees for their hard work.

Travel & Tourism Grant Recommendations – Valerie Earl, Executive Director, Wellington Area Chamber of Commerce/CVB. Ms. Earl shared the grant recommendations provided to the Council. She stated the amounts requested were the same as in 2020. Council member Hamilton made a motion to approve the amounts as presented and Council member Dodds seconded. The motion carried. Council member Hamilton asked about the Chamber Celebration. Ms. Earl responded the celebration, which would be virtual this year, would be released on multiple platforms March 4th.

Cowley College/Sumner Campus Update – Jan Grace, Campus Operations Officer. Ms. Grace reported an increase in GED enrollment and overall enrollment remained the same eight weeks into the semester. CNA and EMS courses are two new classes. She reported the college was looking at possibly purchasing the former Shelley Funeral Home site to use as college fraternity housing. The Tiger Eatery has a new manager/chef so the menu will be changing and options would include carryout and dine-in service. Additionally, during the month of March, the KDHE will be using the community room every Tuesday from 10:00 am to 6:00 pm for free Covid testing, which is open to all. Mayor Valentine asked how long it takes to receive test results. Ms. Grace responded about two days. She also said it is a walk-in site, not a drive-through clinic.

Summer County Economic Development Update – Stacy Davis, Director. Mrs. Davis reported a new department of energy grant was being explored which partners the City with multiple entities. She reported the Sumner County Leadership class normally visits Topeka in February, but did not this year. However, the group went to Oklahoma instead to hear Sean Kouplén, the Oklahoma Secretary of Commerce speak. Council member Hamilton asked about the work session and Ms. Davis responded that she was waiting on one more questionnaire. Mr. Hamilton asked about the possibility of bringing the leadership class to a City Council session. Mrs. Davis responded that one class assignment is to attend a Council meeting in their community.

CONSENT AGENDA

Council member Heersche moved to approve the Consent Agenda and Council member Leitch seconded the motion. The motion carried. The following items were approved under the Consent Agenda.

➤ APPROVAL OF MINUTES

- 1) Regular Session of February 16, 2021

➤ APPROVAL OF APPROPRIATIONS

- 1) Payroll Report for January 31-February 13, 2021 in the amount of \$245,132.03
- 2) Claims Register for February 17 - 28, 2021 in the amount of \$974,156.30

➤ RECEIPT OF COUNCIL CORRESPONDENCE

- 1) Local Retailer Sales Tax & Compensating Use Tax for January 2021
- 2) Healthcare Authority Minutes for December 17, 2020 & January 21, 2021
- 3) Planning Commission Minutes for October 27, 2020
- 4) PSA/Media Release-2021 Dog Tags Extension, February 2021
- 5) Media Release-2021 Lake Camp Opening, February 22, 2021
- 6) PSA/Media Release-Special Alcohol and Drug Advisory Board, February 26, 2021

REPORTS OF MAYOR AND COUNCIL

Council member Soria asked about a Verbio update. City Manager Shields responded that the City had not heard anything; however, the deadline will be in August when the IRB expires and would either need to be extended or renewed. Mr. Soria asked about the recent house fires and what would happen to these condemned homes. Public Works Director Jones responded he was working with the homeowners to take care of the demolition, or use any possible insurance proceeds. Mr. Soria asked about the status of the North A Street trailer park. Mr. Jones responded he had met with one of the owners just prior to the cold weather and was allowed on the property to take inventory and planned to follow up with another meeting.

Council member Heersche reported she heard complaints of long lines and long processing times at the Lake during opening day March 1st and wanted to know how to mitigate future opening day issues. Public Works Director Jones said they had 45 campers move in the first four hours with many wanting a specific spot. He said the Staff had some ideas they planned to take to the Park Board for review. Ms. Heersche asked if online registration could be considered. Mr. Jones reported that he was considering a lottery system next season to potentially help mitigate long lines.

Council member Hamilton asked if there was another water leak on Highway 160 near Braum's after the road had been patched from the previous break. Assistant City Manager of Utilities/IT Newberry confirmed that a second break near the original break would be fixed soon.

Mayor Valentine asked about the sanitation system at the Lake. Public Works Director Jones responded that the Lake Staff had been working on the east side septic system but the lines had collapsed. He ordered materials in January which were received two weeks ago; however it was the wrong material. The correct pipe was set to arrive in the next couple of days so work could begin. Mr. Jones stated that because of possible freezing temperatures this time of year, the rest rooms would not normally be open in March, therefore campers would not be affected by the septic line repair.

REPORTS OF CITY OFFICIALS

City Manager Shields reported that in regards to the opening of the Emergency Department, the State Fire Marshal just approved the facility earlier in the afternoon. The issues identified had been addressed. The KDHE inspection would be the next. No new target date for opening had been set.

City Manager Shields provided an update of the utility issues surrounding the recent arctic blast experienced in Wellington. He reported that thankfully, the City was not a gas utility provider; however, the City would experience some significant impact. He explained the City and residents were Kansas Gas Service customers. The City purchased natural gas through the Kansas Municipal Gas Agency for three City facilities, which will be impacted but to what extent is unknown because bills have not yet been received. Additionally, there will be an impact, via possible higher utility rates, through the KPP (Kansas

Power Pool). However, the KPP has not received their bill from the SPP (Southwest Power Pool), but was expected to have the bill by mid-March. The bill will then be reviewed in a board meeting to understand the impact, but was not expected to be at the levels seen in other cities. Council member Dodds asked about possibly offering extended billing options to electric customers. City Manager Shields responded that he wanted to see what the impact would be first and not speculate upfront. Mr. Shields reported that multiple conferences and meetings had been held from the Federal level down to review various options, including some legislative actions to assist municipalities.

Traffic Control at Intersection of Jefferson & Harvey, Director Jones. Public Works Director Jones stated that in response to the Council's inquiry concerning the traffic signal removal at the intersection of Harvey and Jefferson, the Staff consulted with Professional Engineering Consultants. The engineers recommended that stop signs be installed on each leg of the intersection and change the traffic signal to flashing red in all directions for up to six months to monitor driver response. Stop signs might be problematic because parking spots would need to be restricted or eliminated, sidewalks would be blocked off for several feet, and trees obscuring the signs would need to be trimmed. Council member Heersche stated her preference to use flashing lights for six months to allow the City time to make the changes for the stop signs. Council member Hamilton stated his preference to keep the traffic signal until the work was completed. Mr. Jones stated that curb extensions would need to be discussed with PEC for designs. Council member Soria stated his preference was to proceed with adding stop signs. Mr. Jones stated that he estimated a cost of \$10,000 based upon a KDOT grant application of a different, yet nearby intersection in the past. He also stated that the project could possibly be combined with the intersections of 7th & Jefferson and 8th & Jefferson, but would likely take more than six months. Council member Dodds asked if the new curbing would be consistent with the existing ones. Mr. Jones stated that he would need to consult with PEC regarding the curb extension designs because of concerns of possible diverted traffic from the highway through town. The general consensus was to move forward with converting the intersection to a 4-way stop and retain the signal light until the curb extensions could be completed.

Residential Driveway Surfacing. Public Works Director Jones explained the zoning regulations following discussions from prior City Council sessions concerning parking vehicles in the front yard of a residence and required surfacing. Mr. Jones stated that the Staff reviewed the zoning ordinance and conferred with City Attorney DeJarnett. Although some confusion existed in the code wording, or lack thereof, it was clear that the regulation differentiated between residential and commercial. Residential parking did not have to be constructed of concrete or asphalt unless it was part of a newer housing development. A gravel area in a front yard was not acceptable for parking. However, he stated the codes were from 1976 and outdated, so each will have to be reviewed on a case by case basis.

RESOLUTIONS

A RESOLUTION AUTHORIZING THE CITY MANAGER TO EXECUTE A PURCHASE ORDER WITH RABER FORD, LLC OF WELLINGTON, KANSAS FOR A 2021 ½ TON 4X4 PICKUP FOR THE PARK DEPARTMENT IN THE AMOUNT OF \$29,154 was introduced and considered. Public Works Director Jones stated that \$30,000 had been budgeted for a new vehicle designated for the Park Supervisor. Mr. Jones also stated that Raber Ford, and Countryside Motors were both contacted to submit bids for a 2021 model regular cab 4x4 pickup with a bid option for a 4-door cab. Countryside responded that GM/Chevrolet was not producing fleet model pick-ups for the remainder of the model year so were unable to bid. Council member Dodds made a motion to approve the Resolution as presented. Council member Heersche seconded the motion. Council member Hamilton asked about sending bids out to other cities. Mr. Jones responded that the service of the vehicle was a concern because if for example a Dodge was purchased, there was nowhere to get the oil changed in Wellington and it tied up staff to travel outside

of the City. City Manager Shields added that historically, prior Councils wanted to stay local for purchases. Upon roll call vote, those voting “AYE” were Council members Soria, Westmoreland, Hamilton, Leitch, Heersche, and Dodds. There were no “NAY” votes. Number 6076 was assigned to this Resolution.

A RESOLUTION AUTHORIZING THE CITY MANAGER TO EXECUTE A PURCHASE ORDER WITH SPLASHTACULAR OF PAOLA, KS FOR THE AQUATIC CENTER SLIDE INSPECTION AND MAINTENANCE IN THE AMOUNT OF \$38,899 was introduced and considered. Public Works Director Jones stated that this resolution pertained to the maintenance of the slides at the City Pool. The last maintenance was done in April 2010 and this company constructed the slides originally. He stated that vendors were contacted in several states. This bid is \$3,899 over the budgeted amount, but the estimate includes all three slides, instead of the original bid request of two. Additionally, the cost includes painting the slides which has not ever been done completely. After review of the bids, Mr. Jones recommended using Splashtacular because of past experience with the company and the fact that they have done an excellent job previously. Council member Dodds asked if the work would be completed before the pool opened and Mr. Jones confirmed it would be done before opening this season. Council member Hamilton made a motion to approve the Resolution as presented. Council member Leitch seconded the motion. Upon roll call vote, those voting “AYE” were Council members Leitch, Heersche, Dodds, Soria, Westmoreland, and Hamilton. There were no “NAY” votes. Number 6077 was assigned to this Resolution.

EXECUTIVE SESSION

Council member Heersche moved to recess into Executive Session to discuss a pending legal matter, 75-4319(b)(2). The session shall include the Council, Mayor, City Manager, City Attorney, and Airport Manager. We will reconvene in open session in the Council Chambers in 10 minutes. Council member Dodds seconded the motion. The motion carried. Council reconvened at 7:47 pm. Council took no binding action during the executive session.

ADJOURN

A motion was made to adjourn and was seconded. The motion carried.

Approved and filed this day March 16, 2021.

Mayor

City Clerk

PAYROLL REPORT
FEBRUARY 14, 2021 THRU FEBRUARY 27, 2021
March 5, 2021

					YR-TO-DATE	YR-TO-DATE
			GROSS	OVERTIME	GROSS	OVERTIME
MAYOR/COUNCIL	001-901	DEPT. TOTAL	\$ -	\$ -	\$ 1,600.00	\$ -
MANAGER'S OFFICE	001-902	DEPT. TOTAL	\$ 7,987.80	\$ -	\$ 39,939.00	\$ -
CLERK'S OFFICE	001-903	DEPT. TOTAL	\$ 7,525.61	\$ -	\$ 49,029.98	\$ 40.86
UTILITY OFFICE	001-904	DEPT. TOTAL	\$ 6,305.02	\$ 32.81	\$ 31,764.07	\$ 180.43
CUSTODIAL	001-909	DEPT. TOTAL	\$ 1,039.20	\$ -	\$ 5,196.00	\$ -
IT/GIS	001-910	DEPT. TOTAL	\$ 1,329.40	\$ -	\$ 6,683.97	\$ 36.97
POLICE	001-911	DEPT. TOTAL	\$ 39,195.13	\$ 417.43	\$ 197,707.84	\$ 3,289.06
FIRE	001-912	DEPT. TOTAL	\$ 48,324.64	\$ 9,931.64	\$ 265,028.19	\$ 50,462.80
FACILITIES	001-914	DEPT. TOTAL	\$ 3,238.84	\$ 933.08	\$ 12,192.38	\$ 1,932.22
PARKS	001-915	DEPT. TOTAL	\$ 4,017.80	\$ 243.50	\$ 20,883.37	\$ 313.07
STREET	001-918	DEPT. TOTAL	\$ 16,942.20	\$ 1,302.38	\$ 83,432.43	\$ 3,824.06
CEMETERY	001-919	DEPT. TOTAL	\$ 2,925.98	\$ 126.78	\$ 14,585.39	\$ 589.38
CODE ENFORCEMENT	001-920	DEPT. TOTAL	\$ 5,409.86	\$ 69.66	\$ 26,770.67	\$ 69.66
LEGAL / COUNSEL	001-921	DEPT. TOTAL	\$ 4,322.84	\$ 35.83	\$ 21,621.36	\$ 186.31
LAKE	001-923	DEPT. TOTAL	\$ 5,208.62	\$ 30.02	\$ 25,700.63	\$ 30.02
GOLF COURSE	402-916	DEPT. TOTAL	\$ 6,095.59	\$ 44.58	\$ 29,019.86	\$ 105.62
ELECTRIC PRODUCTION	415-930	DEPT. TOTAL	\$ 17,403.34	\$ 1,130.74	\$ 88,587.67	\$ 4,706.97
ELECTRIC DISTRIBUTION	415-931	DEPT. TOTAL	\$ 21,454.21	\$ 1,861.59	\$ 103,457.05	\$ 5,433.45
WATER PRODUCTION	415-932	DEPT. TOTAL	\$ 6,501.53	\$ 433.33	\$ 31,717.13	\$ 756.61
WATER DISTRIBUTION	415-933	DEPT. TOTAL	\$ 13,230.31	\$ 6,317.51	\$ 41,137.14	\$ 11,125.15
WASTEWATER TREATMT.	415-934	DEPT. TOTAL	\$ 7,997.84	\$ 821.79	\$ 38,759.64	\$ 4,707.11
UTILITY NON-DEPT.	415-999	DEPT. TOTAL	\$ 5,338.00	\$ -	\$ 26,690.00	\$ -
SANITATION	430-935	DEPT. TOTAL	\$ 11,460.87	\$ 472.75	\$ 56,980.24	\$ 4,316.98
TRANSFER STATION	430-936	DEPT. TOTAL	\$ 3,957.07	\$ 147.27	\$ 22,932.04	\$ 688.75
AIRPORT	441-941	DEPT. TOTAL	\$ 1,973.60	\$ -	\$ 9,868.00	\$ -
SCCDAT GRANT	603-987	DEPT. TOTAL	\$ 3,227.00	\$ -	\$ 16,282.00	\$ -
GRAND TOTAL			\$ 252,412.30	\$ 24,352.69	\$ 1,267,566.05	\$ 92,795.48

DEPARTMENT	FUND	VENDOR NAME	DATE	DESCRIPTION	AMOUNT		
NON-DEPARTMENTAL	GENERAL FUND	MASS MUTUAL RETIREMENT SERVICES	3/05/21	RETIREMENT SAVINGS	325.00		
		KANSAS PAYMENT CENTER	3/05/21	CHILD SUPPORT	138.46		
		US BANK	3/05/21	KPERS 457	807.00		
		CITY OF WELLINGTON	3/05/21	TRANSFER WITHHOLDING	11,880.27		
			3/05/21	FICA TRANSFER	8,958.97		
			3/05/21	MEDICARE TRANSFER	2,095.26		
		CITY OF WELLINGTON	3/05/21	KP&F CONTRIBUTION	5,375.95		
			3/05/21	KPERS CONTRIBUTION	2,315.02		
			3/05/21	KPERS T2 CONTRIBUTION	151.09		
		CITY OF WELLINGTON	3/05/21	KPERS T3 CONTRIBUTION	1,438.80		
			3/05/21	TRANSFER STATE WITHHOLDING	<u>5,456.88</u>		
				TOTAL:	38,942.70		
		CITY MANAGER	GENERAL FUND	REDLANDS OFFICE SOLUTIONS	3/12/21	POST NOTES, CLIPS, STAPLES	63.18
				TOUCHTONE COMMUNICATIONS	3/08/21	LONG DISTANCE	7.69
				CITY OF WELLINGTON	3/05/21	FICA TRANSFER	455.10
					3/05/21	MEDICARE TRANSFER	106.44
CITY OF WELLINGTON	3/05/21			KPERS RETIREE-EMPL CONTRI	164.57		
	3/05/21			KPERS INS CONTRIBUTION	61.32		
	3/05/21			KPERS CONTRIBUTION	409.26		
	3/05/21			KPERS T3 CONTRIBUTION	<u>134.68</u>		
	TOTAL:			1,402.24			
CITY CLERK'S OFFICE	GENERAL FUND			ASCENSION MEDICAL GROUP VIA CHRISTI, P	3/08/21	EMPLOYEE PHYSICALS	100.00
		REDLANDS OFFICE SOLUTIONS	3/12/21	KEYTAGS, ASSORTED	9.14		
			3/12/21	BLUE CARD STOCK PKG	13.52		
			3/12/21	INDEX TABS, 375 CT	28.49		
			3/12/21	3 X 5 POST IT NOTES	26.12		
			3/12/21	10 PK LIQUID HIGHLIGHTER	15.95		
		MILL CREEK LUMBER OF KANSAS INC.	3/12/21	OVER PMT CUST #F373100	18.28		
		TOUCHTONE COMMUNICATIONS	3/08/21	LONG DISTANCE	10.64		
		THE WELLINGTON DAILY NEWS	3/12/21	ORD.4279 TERM LIMITS BOARD	12.00		
		CITY OF WELLINGTON	3/12/21	NOTICE INTENT SEEK PRIVEAT	19.50		
			3/12/21	ORD.4280 ISSUANCE OF GOB	72.00		
			3/05/21	FICA TRANSFER	443.61		
		CITY OF WELLINGTON	3/05/21	MEDICARE TRANSFER	103.74		
			3/05/21	KPERS INS CONTRIBUTION	75.26		
			3/05/21	KPERS CONTRIBUTION	202.68		
			3/05/21	KPERS T3 CONTRIBUTION	<u>464.84</u>		
			TOTAL:	1,579.21			
		UTILITY COLLECTION	GENERAL FUND	REDLANDS OFFICE SOLUTIONS	3/12/21	DESK ORGANIZER	58.30
					3/12/21	OFFICE SUPPLIES	36.96
3/12/21	OFFICE SUPPLIES				74.17		
TOUCHTONE COMMUNICATIONS	3/08/21			LONG DISTANCE	1.94		
WALMART COMMUNITY	3/04/21			FACEMASKS, FT & HND WARMERS	56.90		
	3/04/21			DOG BISCUITS	10.20		
	3/04/21			BATTERY BACKUP	19.76		
CITY OF WELLINGTON	3/12/21			POSTAGE	1,276.78		
CITY OF WELLINGTON	3/05/21			FICA TRANSFER	343.70		
	3/05/21			MEDICARE TRANSFER	80.38		
CITY OF WELLINGTON	3/05/21			KPERS INS CONTRIBUTION	63.05		
	3/05/21			KPERS CONTRIBUTION	272.20		
	3/05/21			KPERS T3 CONTRIBUTION	<u>287.05</u>		
	TOTAL:			2,581.39			

DEPARTMENT	FUND	VENDOR NAME	DATE	DESCRIPTION	AMOUNT	
GENERAL SERVICES	GENERAL FUND	TEMPORARY VENDO SHAYNA TEMPLETON	3/08/21	SHAYNA TEMPLETON: PRIZE MO	500.00	
		ADAMS JONES LAW FIRM, P.A.	3/12/21	AIRPORT PAVERS LEGAL ISSUE	3,990.00	
		EMERGENCY FIRE EQUIPMENT	3/12/21	CHARGER,BATTERY WPS AC 10A	953.89	
		GOOGLE INC.	3/08/21	GOOGLE WORKSPACE/GOOGLE VA	44.00	
		WELLINGTON HIGH SCHOOL	3/12/21	20/21 PAG3 1/8 BUSINESS CD	45.00	
				TOTAL:		5,532.89
JANITORIAL	GENERAL FUND	BUSINESS PROTECTION EQUIPMENT CORP.	3/12/21	MAINTENANCE AGREEMENT	249.50	
		HAWKINS SERVICES LLC	3/12/21	ANNUAL MAINT. FIRE EXTINGU	98.00	
		BRADY INDUSTRIES OF KANSAS	3/12/21	SPIC & SPAN	111.56	
			3/12/21	3X5 FLOOR MAT	83.82	
		WALMART COMMUNITY	3/04/21	POP & WATER	52.84	
			3/04/21	BRUSH	2.28	
		CITY OF WELLINGTON	3/05/21	FICA TRANSFER	61.21	
			3/05/21	MEDICARE TRANSFER	14.31	
		CITY OF WELLINGTON	3/05/21	KPERS INS CONTRIBUTION	10.39	
			3/05/21	KPERS CONTRIBUTION	92.18	
				TOTAL:		776.09
I. T./G.I.S.	GENERAL FUND	CITY OF WELLINGTON	3/05/21	FICA TRANSFER	123.95	
			3/05/21	MEDICARE TRANSFER	28.99	
		CITY OF WELLINGTON	3/05/21	KPERS INS CONTRIBUTION	20.88	
			3/05/21	KPERS CONTRIBUTION	67.33	
			3/05/21	KPERS T3 CONTRIBUTION	117.92	
		TOTAL:		359.07		
POLICE	GENERAL FUND	BAYSINGER POLICE SUPPLY	3/12/21	BADGE HOLDER	12.00	
			3/12/21	BASEBALL HAT	9.99	
		CUSTOM CAGE	3/12/21	REPLACE PLEXGLASS SIDE SCR	50.00	
		GALLS, LLC	3/12/21	TEXTROP LD SHIFT	91.57	
			3/12/21	5.11 MENS POLO LG	123.75	
			3/12/21	BADGE	17.40	
			3/12/21	5.11 TACLITE PANT 38/34 TA	47.85	
			3/12/21	SHIPPING	10.00	
			3/12/21	5.11 POLO XLT	41.25	
			3/12/21	BADGE	5.80	
			3/12/21	5.11 TACTLITE PANT 38/32 T	47.85	
			3/12/21	SHIPPING	5.25	
			3/12/21	DUTY PANTS W/STRIPING	90.37	
		GRANITE TELECOMMUNICATIONS	3/12/21	1/2 911 LOBBY PHONE	30.85	
			3/12/21	PHONE LINES SERVICES	436.35	
			3/12/21	1/2 911 LOBBY PHONE	31.08	
			3/12/21	PHONE LINES SERVICE	439.67	
		KANSAS GAS SERVICE	3/12/21	GAS BILL 200 NORTH C STRE	227.37	
		BRADY INDUSTRIES OF KANSAS	3/12/21	SPIC & SPAN	111.56	
		O'REILLY AUTOMOTIVE STORES, INC.	3/12/21	VEHICLE BATTERY #172	136.07	
			3/12/21	CLEANING SUPPLIES	26.48	
		RABER FORD, LLC	3/12/21	LUBE, OIL, & FILTER	65.55	
			3/12/21	TIRE REPAIR	18.00	
			3/12/21	CHANGE, OIL, FILTER, ROTAT	55.18	
			3/12/21	CREDIT SALES TAX	4.79	
			3/12/21	LUBE, OIL, FILTER TRK #179	50.39	
		REDLANDS OFFICE SOLUTIONS	3/12/21	BOX BLACK SHARPIES	10.06	
			3/12/21	BOX METALLIC SHARPIES	20.09	
		SUMNER COUNTY SHERIFF	3/12/21	PRISONER CARE & MAINTENANC	735.00	
		SUMNER COUNTY TREASURER	3/12/21	REGISTRATION RENEWALS	151.00	

DEPARTMENT	FUND	VENDOR NAME	DATE	DESCRIPTION	AMOUNT
		TOUCHTONE COMMUNICATIONS	3/08/21	LONG DISTANCE	22.28
		UNDERGROUND VAULTS & STORAGE	3/12/21	CHRI RECORD REQUESTS	45.05
		VERIZON WIRELESS	3/08/21	DEPARTMENT CELL PHONES	164.66
		VERITONE, INC.	3/12/21	REDACTION AP;ICATION LICEN	2,400.00
		WALMART COMMUNITY	3/04/21	USB PORT/KEYBOARD	53.85
			3/04/21	WATER HOSE-WASH CARS	32.86
		WELLINGTON WHEEL	3/12/21	TIRE REPAIR 2018 FORD #167	18.50
			3/12/21	TIRE REPAIR VEHICLE #167	18.50
		CITY OF WELLINGTON	3/05/21	FICA TRANSFER	2,266.91
			3/05/21	MEDICARE TRANSFER	530.20
		CITY OF WELLINGTON	3/05/21	KP&F CONTRIBUTION	7,183.58
			3/05/21	KPERS INS CONTRIBUTION	43.86
			3/05/21	KPERS CONTRIBUTION	141.69
			3/05/21	KPERS T3 CONTRIBUTION	247.37
				TOTAL:	16,262.30
FIRE	GENERAL FUND	ASCENSION MEDICAL GROUP VIA CHRISTI, P	3/08/21	EMPLOYEE PHYSICALS	1,200.00
		CASCO INDUSTRIES, INC.	3/12/21	GLOVE FIRE KNIGHT	440.00
			3/12/21	FREIGHT	25.00
		COWLEY COUNTY COMMUNITY COLLEGE	3/12/21	SEMESTER-PARAMEDIC COURSES	3,639.00
		EMERGENCY FIRE EQUIPMENT	3/12/21	REWELD CRACK STEEL FITTING	170.00
			3/12/21	CORD FOR POWER AC CONDUCTO	77.60
			3/12/21	GLOVES, RESCUE EXTRICATION	118.10
		GRANITE TELECOMMUNICATIONS	3/12/21	1/2 911 LOBBY PHONE	30.95
			3/12/21	1/2 911 LOBBY PHONE	31.08
		INLAND TRUCK PARTS & SERVICE	3/12/21	ENGINE 2 R&R DIFFERENTIALS	4,569.07
		KANSAS GAS SERVICE	3/12/21	GAS BILL 200 NORTH C STRE	422.26
		LIFE-ASSIST, INC.	3/12/21	SHEETS,MATTRESS COVERS,ETC	721.48
		MEDI-WASTE DISPOSAL	3/12/21	MEDICAL WASTE DISOPAL WFD	55.00
		O'REILLY AUTOMOTIVE STORES, INC.	3/12/21	HEADLIGHT BULB SQUAD 2051	15.92
		P.E.T. TESTING LABORATORY	3/12/21	VISUAL INSPECTION	410.00
		JOHN DEERE FINANCIAL	3/10/21	NOZZLE METAL THREADED FRON	34.95
		RABER FORD, LLC	3/12/21	ANNUAL INSPECITON	99.00
			3/12/21	ANNUAL INSPECTION	99.00
		SUMNER REGIONAL MEDICAL CENTER	12/31/18	EMPLOYEE PHYSICAL - MURRA	138.00
			4/12/19	DRUG TEST FOR CARR	138.00
		MILL CREEK LUMBER OF KANSAS INC.	3/12/21	HOSE ADAPTER	15.99
			3/12/21	SMOOTH BORE FASTENER	1.28
		TOUCHTONE COMMUNICATIONS	3/08/21	LONG DISTANCE	3.16
		WALMART COMMUNITY	3/04/21	WATER/GATORADE	35.38
			3/04/21	STAINLESS STEEL POLISH/TIS	10.10
			3/04/21	TOWELS ZIPLOCS	46.78
			3/04/21	OFFICE SUPPLIES	17.76
			3/04/21	DEPT SUPPLIES	131.46
			3/04/21	BATTERIES	59.76
			3/04/21	CAMERA MEMORY CARD, KITCHE	27.92
		WELLINGTON FIRE DEPT.	3/12/21	DINNER RUN #21-4676 PATRIC	9.13
			3/12/21	DINNER FUN #21-5815 PATRIC	7.06
			3/12/21	EMS LUNCH RUNS 21-7814 ROB	14.51
			3/12/21	EMS LUNCH RUNS 21-7814 HAR	6.45
		CITY OF WELLINGTON	3/05/21	FICA TRANSFER	2,849.34
			3/05/21	MEDICARE TRANSFER	666.37
		CITY OF WELLINGTON	3/05/21	KP&F CONTRIBUTION	9,959.35
			3/05/21	KPERS INS CONTRIBUTION	14.98
			3/05/21	KPERS T3 CONTRIBUTION	132.85
		ZOLL MEDICAL CORPORATION GPO	3/12/21	6 X ECG ELECTRODES	295.20

DEPARTMENT	FUND	VENDOR NAME	DATE	DESCRIPTION	AMOUNT
			3/12/21	4 X ECG ELECTRODES	236.16
				TOTAL:	26,975.40
AUDITORIUM	GENERAL FUND	GRANITE TELECOMMUNICATIONS	3/12/21	AUD. ELEVATOR LINES	65.73
			3/12/21	AUT. ELEVATOR LINE	66.27
		HAWKINS SERVICES LLC	3/12/21	EXTINGUISHER ANNUAL MAINT.	210.00
		TOUCHTONE COMMUNICATIONS	3/08/21	LONG DISTANCE	0.27
				TOTAL:	342.27
FACILITIES	GENERAL FUND	ADVANCED MECHANICAL SOLUTIONS, LLC	3/12/21	HUMIDIFIER HOSPITAL BLDG	1,500.00
			3/12/21	REPAIRED AIR LEAK	925.00
			3/12/21	PATCHED AIR HANDLERS	2,580.00
		CM3 MECHANICAL CONTRACTOR	3/12/21	BOILER REPAIRS	975.00
		GRANITE TELECOMMUNICATIONS	3/12/21	PHONE LINES SERVICE	251.02
			3/12/21	PHONE LINES SERVICE	256.33
		O'REILLY AUTOMOTIVE STORES, INC.	3/12/21	VAC CONNECT	9.62
		MILL CREEK LUMBER OF KANSAS INC.	3/12/21	LIGHTED EMERGENCY LIGHTS	39.99
			3/12/21	TEXTURE CEILING TILES	221.20
			3/12/21	MISC. PLUMBING MATERIALS	34.15
			3/12/21	IRON SEWAGE PUMP	179.99
			3/12/21	GALVANIZED BUSHING	8.69
			3/12/21	SUMP CHECK VALVE KIT	11.99
			3/12/21	SUMP VALVE KIT	11.99
			3/12/21	CREDIT~SUMP VALVE KIT	11.99-
			3/12/21	RECIPROCATING BLADES	9.18
			3/12/21	PLUMBING MATERIALS	47.96
			3/12/21	LED BULBS	12.99
			3/12/21	GORILLA MOUNTING TAPE	5.39
			3/12/21	FLUORESCENT	37.99
			3/12/21	FASTENERS & DRILL BITS	70.02
			3/12/21	FASTENERS & SPACKLING COMP	4.99
		CITY OF WELLINGTON	3/05/21	FICA TRANSFER	187.79
			3/05/21	MEDICARE TRANSFER	43.92
		CITY OF WELLINGTON	3/05/21	KPERS RETIREE-EMPL CONTRI	287.29
				TOTAL:	7,700.50
PARKS	GENERAL FUND	A AND A AUTO SUPPLY	3/08/21	TRUCK FILTER WRENCH	13.68
			3/08/21	CREDIT~CHARGED SALES TAX E	13.68-
			3/08/21	TRUCK FILTER WRENCH	12.49
		APAC, INC.-SHEARS	3/12/21	FILL SAND & CONCRETE	576.28
			3/12/21	50% REIMBURSED BY USE 353	576.27
		AUTOMART OF WELLINGTON	3/12/21	FILTER FOR 5310 TRACTOR	24.62
			3/12/21	HYDRAULIC FLUID & AIR FILT	126.80
			3/12/21	ENGINE OIL LEAK SEALANT	18.86
		HAWKINS SERVICES LLC	3/12/21	EXTINGUISHERS ANNUAL MAINT	84.00
		KELLY COMPLIANCE	3/12/21	EMPLOYEE DRUG SCREEN	50.25
		O'REILLY AUTOMOTIVE STORES, INC.	3/12/21	OIL FILTER	5.05
			3/12/21	MOTOR OIL 1 GAL	59.97
		JOHN DEERE FINANCIAL	3/10/21	TUBING CUTTER	17.99
			3/10/21	DEAR OIL FOR 5310 TRACTOR	26.99
		SALISBURY SUPPLY CO. INC.	3/12/21	AIR FILTERS	0.70
		TOUCHTONE COMMUNICATIONS	3/08/21	LONG DISTANCE	0.72
		WALMART COMMUNITY	3/04/21	PLANNER	8.24
		CITY OF WELLINGTON	3/05/21	FICA TRANSFER	228.68
			3/05/21	MEDICARE TRANSFER	53.48
		CITY OF WELLINGTON	3/05/21	KPERS INS CONTRIBUTION	40.18

DEPARTMENT	FUND	VENDOR NAME	DATE	DESCRIPTION	AMOUNT
			3/05/21	KPERS CONTRIBUTION	187.49
			3/05/21	KPERS T3 CONTRIBUTION	168.89
		UNIFIRST CORPORATION	3/12/21	UNIFORM CLEANING	18.65
			3/12/21	UNIFORM CLEANING	58.25
				TOTAL:	2,344.85
STREETS	GENERAL FUND	TEMPORARY VENDO JEFF FERGUSON	3/08/21	JEFF FERGUSON: REIMBURSE P	32.24
		M6 CONCRETE ACCESSORIES	3/12/21	TROWEL	55.08
		CREATIVE SAFETY SUPPLY, LLC	3/12/21	LABELTAC VINYL LABEL SUPPL	245.72
		DAVIS TREE SERVICE	3/12/21	R.O.W. CLEARANCE	1,139.85
		DERBY OVERHEAD COMPANY	3/12/21	SOUTH/EAST OVERHEAD DOOR	544.25
		FLEETPRIDE, INC.	3/12/21	SWITCH PANEL TRK #12	27.58
		THE G.W. VAN KEPPEL CO.	3/12/21	FUEL CAP FOR BROOM TRACTOR	35.72
		HAIVALA CONCRETE TOOLS, INC.	3/12/21	COUPLERS CONCRETE BROOMS	59.37
		NEWMAN TRAFFIC SIGNS, INC	3/12/21	"STOP" SIGNS	339.10
			3/12/21	"WELLINGTON COMPOST SITE"	68.04
			3/12/21	"YARD WASTE ONLY" SIGN	45.89
			3/12/21	FREIGHT	54.67
		O'REILLY AUTOMOTIVE STORES, INC.	3/12/21	RESPIRATOR MASKS	20.70
			3/12/21	CARB CLEANER	23.88
			3/12/21	OIL FILTERS	16.28
		JOHN DEERE FINANCIAL	3/10/21	PIPE & FITTINGS SALT BRINE	7.48
			3/10/21	FITTINGS SALT BRINE PUMP	0.99
			3/10/21	ICE CLAWS	15.00
			3/10/21	ICE CLEATS	39.98
		REDLANDS OFFICE SOLUTIONS	3/12/21	COPY PAPER	32.49
			3/12/21	DATE RECEIVED STAMP	47.98
		SCOTWOOD INDUSTRIES, LLC	3/12/21	CALCIUM CHLORIDE PELLETS	1,402.00
		SUNFLOWER CUSTOM T'S	3/12/21	T-SHIRTS W/CITY LOGO	60.00
			3/12/21	FULL ZIP HOODED SWEATSHIRT	29.64
		SUMNER NEWSLOW	3/12/21	ADVERTISING STREET LABOROR	135.00
		MILL CREEK LUMBER OF KANSAS INC.	3/12/21	MASKING TAPE	6.99
			3/12/21	DRILL BITS & SCREWS	34.69
			3/12/21	HEADER OVERHEAD GARAGE DOO	44.74
			3/12/21	HVAC FILTERS	28.74
		TOUCHTONE COMMUNICATIONS	3/08/21	LONG DISTANCE	10.40
		CITY OF WELLINGTON	3/05/21	FICA TRANSFER	978.19
			3/05/21	MEDICARE TRANSFER	228.77
		CITY OF WELLINGTON	3/05/21	KPERS INS CONTRIBUTION	167.56
			3/05/21	KPERS CONTRIBUTION	1,220.38
			3/05/21	KPERS T3 CONTRIBUTION	265.83
		UNIFIRST CORPORATION	3/12/21	UNIFORM CLEANING	14.21
			3/12/21	UNIFORM & MOP CLEANING	26.86
			3/12/21	UNIFORM & MOP CLEANING	27.41
		WHITAKER AGGREGATES, INC.	3/12/21	BLUE 1 1/2 CRUSHER RUN ROC	124.87
				TOTAL:	7,658.57
CEMETERY	GENERAL FUND	GARD'N WISE DISTRIBUTORS INC.	3/12/21	PREMIUM FESCUE BLEND 50#	380.00
		GREENO INDUSTRIES	3/12/21	MISC METAL MATERIALS FOR S	78.00
		HAWKINS SERVICES LLC	3/12/21	EXTINGUISHER ANNUAL MAINT.	14.00
			3/12/21	NEW ABC EXTINGUISHERS	142.00
		POTTER SAW SERVICE	3/12/21	STIHLULTRA FUEL MIX & BAR	37.41
			3/12/21	PARTS FOR CHAIN SAW	117.25
			3/12/21	NEW WEDEATER	369.99
			3/12/21	LESS DISCOUNT	36.99-
		JOHN DEERE FINANCIAL	3/10/21	TOP LINK BUSHINGS	2.49

DEPARTMENT	FUND	VENDOR NAME	DATE	DESCRIPTION	AMOUNT
			3/10/21	TIE DOWN & RATCHET STRAPS	86.97
		MILL CREEK LUMBER OF KANSAS INC.	3/12/21	PLUMBING MATERIALS & WALLB	83.95
			3/12/21	HOSE HANGER	16.99
			3/12/21	HVAC FILTERS	26.38
		TOUCHTONE COMMUNICATIONS	3/08/21	LONG DISTANCE	1.46
		CITY OF WELLINGTON	3/05/21	FICA TRANSFER	178.19
			3/05/21	MEDICARE TRANSFER	41.67
		CITY OF WELLINGTON	3/05/21	KPERS INS CONTRIBUTION	29.26
			3/05/21	KPERS CONTRIBUTION	164.73
			3/05/21	KPERS T2 CONTRIBUTION	94.80
		UNIFIRST CORPORATION	3/12/21	UNIFORM CLEANING	14.21
			3/12/21	UNIFORM CLEANING	14.21
				TOTAL:	1,856.97
BUILDING AND CODES	GENERAL FUND	PROFESSIONAL ENGINEERING	3/12/21	PROFESSIONAL SVC/MNTH RETN	800.00
		SECURITY 1ST TITLE LLC	3/12/21	OWNERS & ENCUMBRANCES REPO	100.00
		TOUCHTONE COMMUNICATIONS	3/08/21	LONG DISTANCE	1.98
		THE WELLINGTON DAILY NEWS	3/12/21	APPLICATION BOZ SPECIAL PE	54.00
		CITY OF WELLINGTON	3/05/21	FICA TRANSFER	309.74
			3/05/21	MEDICARE TRANSFER	72.45
		CITY OF WELLINGTON	3/05/21	KPERS INS CONTRIBUTION	54.09
			3/05/21	KPERS CONTRIBUTION	172.28
			3/05/21	KPERS T3 CONTRIBUTION	307.58
				TOTAL:	1,872.12
LEGAL/COURT	GENERAL FUND	SHAWN R. DEJARNETT	3/03/21	CITY PROSECUTOR FEBRUARY 2	3,100.00
		LINDA K. HOWERTON, ATTORNEY	3/12/21	COURT APPOINTED ATTORNEY	144.00
		REDLANDS OFFICE SOLUTIONS	3/12/21	NIC MED BLUE PENS 1 DOZ	3.45
		TOUCHTONE COMMUNICATIONS	3/08/21	LONG DISTANCE	0.99
		CITY OF WELLINGTON	3/05/21	FICA TRANSFER	243.43
			3/05/21	MEDICARE TRANSFER	56.93
		CITY OF WELLINGTON	3/05/21	KPERS INS CONTRIBUTION	17.90
			3/05/21	KPERS CONTRIBUTION	158.73
				TOTAL:	3,725.43
LAKE RECREATION	GENERAL FUND	APAC, INC.-SHEARS	3/12/21	CRUSHED CONCRETE	636.62
		GREENO INDUSTRIES	3/12/21	DUMPSTER REPAIRS	200.00
		KANOKLA NETWORKS	3/08/21	TELEPHONE BILL 03/01-3/31/	46.35
			3/08/21	TELEPHONE BILL 03/01-3/31/	46.35
		KELLE OIL COMPANY	3/12/21	REPLACE TUBE IN BACKHOE TI	73.86
		JOHN DEERE FINANCIAL	3/10/21	DRAIN PIPE FOR SEPTIC SYST	1,559.88
			3/10/21	RETURN DRAIN PIPE	1,559.88-
			3/10/21	FLEECE HEADBANDS & BIB COV	69.26
			3/10/21	FILTERS	69.95
		SOUTH CENTRAL HYDRAULICS	3/12/21	RESEALED CYLINDER	397.62
		THE TAP OF KANSAS, INC.	3/12/21	PLUMBING MATERIALS E.RESTR	376.97
			3/12/21	PLUMBING MATERIALS E RESTR	72.92
		MILL CREEK LUMBER OF KANSAS INC.	3/12/21	PLUMBING MATERIALS SPECTIC	91.98
			3/12/21	SELF LIGHTING TORCH	32.99
		TOUCHTONE COMMUNICATIONS	3/08/21	LONG DISTANCE	1.90
		WALMART COMMUNITY	3/04/21	PROPANE CYLINDERS	29.48
		CITY OF WELLINGTON	3/05/21	FICA TRANSFER	289.14
			3/05/21	MEDICARE TRANSFER	67.62
		CITY OF WELLINGTON	3/05/21	KPERS INS CONTRIBUTION	52.08
			3/05/21	KPERS CONTRIBUTION	333.44
			3/05/21	KPERS T2 CONTRIBUTION	128.56

DEPARTMENT	FUND	VENDOR NAME	DATE	DESCRIPTION	AMOUNT
				TOTAL:	<u>3,017.09</u>
GENERAL SERVICES	EMPLOYEE BENEFIT C	TEMPORARY VENDO CABEL REID	3/05/21	CABEL REID: EMPLOYEE EYECA	213.00
		BLUE CROSS-BLUE SHIELD	3/08/21	HEALTH PREMIUMS APRIL 2021	105,399.73
			3/08/21	DENTAL PREIUMS APRIL 2021	8,831.04
		GRENE VISION GROUP LLC	3/08/21	EMPLOYEE EYECARE REIMBURSE	85.00
			3/08/21	EMPLOYEE EYECARE REIMBURSE	812.50
		NEW DIRECTIONS BEHAVIORAL HEALTH	3/08/21	CONTRACT SERVICES MAR-MAY	<u>914.40</u>
				TOTAL:	116,255.67
NON-DEPARTMENTAL	SPECIAL LIABILITY	RENN & COMPANY, INC.	3/12/21	ADD HOSPITAL PROPERTY	<u>5,012.00</u>
				TOTAL:	5,012.00
CEMETERY	CAPITAL IMPROVEMEN	GREENO INDUSTRIES	3/12/21	BUILT WORK BENCH FOR SHOP	<u>1,230.00</u>
				TOTAL:	1,230.00
CAPITAL IMPROVEMENTS	CAPITAL IMPROVEMEN	RCB BANK	3/08/21	LSE PMT IRRIGATION SYSTEM	<u>4,034.36</u>
				TOTAL:	4,034.36
NON-DEPARTMENTAL	GOLF COURSE	MASS MUTUAL RETIREMENT SERVICES	3/05/21	RETIREMENT SAVINGS	60.00
			3/05/21	MASS MUT LOAN PMT	70.90
		CITY OF WELLINGTON	3/05/21	TRANSFER WITHHOLDING	593.49
			3/05/21	FICA TRANSFER	351.36
			3/05/21	MEDICARE TRANSFER	82.17
		CITY OF WELLINGTON	3/05/21	KPERS CONTRIBUTION	200.02
			3/05/21	KPERS T3 CONTRIBUTION	160.50
		CITY OF WELLINGTON	3/05/21	TRANSFER STATE WITHHOLDING	<u>232.25</u>
				TOTAL:	1,750.69
GOLF	GOLF COURSE	A AND A AUTO SUPPLY	3/08/21	LAMP	11.66
			3/08/21	COPPER AUTOLITE	10.38
		JORBAN RISCOE BUILDING ESSENTIALS	3/12/21	ELECTRICAL UNIT HEATER	798.00
		KANOKLA NETWORKS	3/12/21	SECURITY MONTORING	31.95
		O'REILLY AUTOMOTIVE STORES, INC.	3/12/21	COPPER LUGS FOR CART SHED	8.98
			3/12/21	WIRE LUGS	40.81
			3/12/21	FUEL FILTER NEW GAS PUMP	6.94
		JOHN DEERE FINANCIAL	3/10/21	JOINT PASTE AND TAPE	9.78
			3/10/21	BATTERIES & SOCKET SET	24.98
			3/10/21	BOTTLED WATER	6.98
			3/10/21	FIBERGLASS SNOW SHOVEL	24.99
		TOUCHTONE COMMUNICATIONS	3/08/21	LONG DISTANCE	1.17
		CITY OF WELLINGTON	3/05/21	FICA TRANSFER	351.36
			3/05/21	MEDICARE TRANSFER	82.17
		CITY OF WELLINGTON	3/05/21	KPERS INS CONTRIBUTION	60.08
			3/05/21	KPERS CONTRIBUTION	295.69
			3/05/21	KPERS T3 CONTRIBUTION	<u>237.27</u>
				TOTAL:	2,003.19
NON-DEPARTMENTAL	ELEC-WATER.-WWTP	MASS MUTUAL RETIREMENT SERVICES	3/05/21	RETIREMENT SAVINGS	161.00
		US BANK	3/05/21	ING LOAN PMT	150.00
			3/05/21	KPERS 457	420.00
		CITY OF WELLINGTON	3/05/21	TRANSFER WITHHOLDING	4,416.58
			3/05/21	FICA TRANSFER	4,186.96
			3/05/21	MEDICARE TRANSFER	979.20
		CITY OF WELLINGTON	3/05/21	KPERS CONTRIBUTION	2,114.79
			3/05/21	KPERS T2 CONTRIBUTION	332.05

DEPARTMENT	FUND	VENDOR NAME	DATE	DESCRIPTION	AMOUNT
			3/05/21	KPERS T3 CONTRIBUTION	1,715.57
		CITY OF WELLINGTON	3/05/21	TRANSFER STATE WITHHOLDING	<u>2,533.31</u>
				TOTAL:	17,009.46
ELECTRIC PRODUCTION	ELEC-WATER.-WWTP	AIRGAS USA, LLC	3/12/21	HYDROGEN INDUSTRIAL SIZE 2	283.62
			3/12/21	DELIVERY	35.00
			3/12/21	FUEL SURCHARGE	2.45
			3/12/21	HAZMAT	27.50
			3/12/21	CYL RENTAL CARBON DIOXIDE	82.88
			3/12/21	CYL RENTAL HYDROGEN	367.92
			3/12/21	CYL RENTAL OXYGEN	80.64
			3/12/21	CYL RENTAL CARBON DIOXIDE	12.60
			3/12/21	HAZMAT	40.00
		KANSAS DEPT OF HEALTH & ENV	3/12/21	2020 GAS TURBINE EMISSION	1,000.00
			3/12/21	2020 STEAM PLANT EMISSIONS	1,000.00
		BRADY INDUSTRIES OF KANSAS	3/12/21	SUPERIOR SNOW N ICE 50LB B	38.99
			3/12/21	OIL DRY PREMIUM ABSORBENT	26.61
			3/12/21	NEW WHITE TOWEL BARMOP	67.15
			3/12/21	KITCHEN ROLL TOWEL	38.16
			3/12/21	CUTLERY SPOONS	13.18
		O'REILLY AUTOMOTIVE STORES, INC.	3/12/21	REMANUFACTURED STEER PUMP	50.19
			3/12/21	CORE CHARGE	21.89
			3/12/21	CREDIT~REMANUFACTURED PUMP	50.19-
			3/12/21	CREDIT~CORE CHARGE	21.89-
			3/12/21	1 QT MOTOR OIL	8.64
			3/12/21	1 QT MOTOR OIL	16.50
		POTTER SAW SERVICE	3/12/21	3# .095 X STRING	39.00
			3/12/21	STIHL ULTRA 6.4OZ FUEL MIX	24.42
		JOHN DEERE FINANCIAL	3/10/21	2" BOTTOM MOUNT 1/4"	12.99
			3/10/21	GRADE 5 NUTS AND BOTLS	3.35
			3/10/21	OXYGEN CYLINDER 14.1 OZ	9.99
		PROFESSIONAL BODY WORKS, INC.	3/12/21	REPAIR WINDOW 2006 DODGE C	185.70
		RAUSCH TIRE & EQUIPMENT	3/12/21	WHEELS FOR DEMIN TRAILER	472.75
		MILL CREEK LUMBER OF KANSAS INC.	3/12/21	PLEAT FILTER	31.47
			3/12/21	1/2"X21' GALV PIPE, 1/2' U	54.63
			3/12/21	1/2" X 21' GALV PIPE	43.69
			3/12/21	400A ANTISIPHON FILL VALVE	8.75
			3/12/21	VAC WET/DRY 6.5 JP	164.24
		TOUCHTONE COMMUNICATIONS	3/08/21	LONG DISTANCE	3.73
		WALMART COMMUNITY	3/04/21	WATER FOR BATTERIES	8.76
			3/04/21	MISC.SANDING MATERIAL &SUP	60.18
			3/04/21	MISC. CLEANING SUPPLIES	26.84
			3/04/21	BATTERIES AA 24 PK, AAA 24	35.57
			3/04/21	PLASCTIC STORAGE CONTAINER	46.39
		CITY OF WELLINGTON	3/05/21	FICA TRANSFER	1,008.91
			3/05/21	MEDICARE TRANSFER	235.94
		CITY OF WELLINGTON	3/05/21	KPERS INS CONTRIBUTION	174.03
			3/05/21	KPERS CONTRIBUTION	1,417.50
			3/05/21	KPERS T2 CONTRIBUTION	126.17
		UNIFIRST CORPORATION	3/12/21	UNIFORM RENTAL	<u>79.64</u>
				TOTAL:	7,416.48
ELECTRIC DISTRIBUTION	ELEC-WATER.-WWTP	A AND A AUTO SUPPLY	3/12/21	OIL DRY	38.19
			3/12/21	ADHESIVE CLEANER 20OZ	32.58
		DAVIS TREE SERVICE	3/12/21	R.O.W. CLEARANCE	911.88
			3/12/21	R.O.W. CLEARANCE	1,671.78

DEPARTMENT	FUND	VENDOR NAME	DATE	DESCRIPTION	AMOUNT
			3/12/21	R.O.W. CLEARANCE	3,039.60
		PROGRESSIVE AG COOP.	3/12/21	PROPANE FOR FORKLIFT	12.50
		GINN MANUFACTURING CO.	3/12/21	ALIGN FRONT END TRK #18	375.00
		GRAYBAR	3/12/21	CONTACTOR	128.21
			3/12/21	OVERLOAD RELAY	52.73
		KANSAS MUNICIPAL UTILITIES	3/12/21	KMU LINEMAN APPRENTICESHIP	700.00
		KANSAS ONE-CALL SYSTEM, INC	3/12/21	LOCATES	26.40
		KELLY COMPLIANCE	3/12/21	EMPLOYEE DRUG SCREEN	149.50
		BORDER STATES INDUSTRIES, INC.	3/12/21	6" HEAVY DUTY STANDOFF	543.56
			3/12/21	BRUSH CONDUCTOR WIRE D	50.70
			3/12/21	WR419 H TAP CONNECTOR	119.79
			3/12/21	102 A AJT 190V TO 480V	494.69
		O'REILLY AUTOMOTIVE STORES, INC.	3/12/21	ADHESIVE REMOVER	21.89
		P.E.T. TESTING LABORATORY	3/12/21	BLANKETS & LINE HOSE TESTE	4,544.75
		POTTER SAW SERVICE	3/12/21	STIHL BAR OIL	25.98
			3/12/21	.325 FIEL & GUIDE	16.99
			3/12/21	1/4" FILE & GUIDE	16.99
		JOHN DEERE FINANCIAL	3/10/21	ELBOW 90 DEG SANITARY 3"	3.49
			3/10/21	GRADE 8 NUTS BOLTS FLAT WA	2.42
		STANION WHOLESALE ELECTRIC CO., INC.	3/12/21	GREENLEE DRILL/TAP	9.32
			3/12/21	KLEIN LOCKBACK KNIFE	131.43
			3/12/21	KLEIN HOWE WIRE TOOL	185.56
			3/12/21	50 AMP RECEPT	27.63
		SUMNER COUNTY TREASURER	3/12/21	REGISTRATION RENEWALS	14.25
		MILL CREEK LUMBER OF KANSAS INC.	3/12/21	SERVICE ENTRANCE CAP 1"	7.59
			3/12/21	EMT COMPR CONNECTOR 1"	2.99
			3/12/21	TAX	1.01
			3/12/21	EMT CONDULT 3/4 X 10	53.58
			3/12/21	RIGID LB CONDUIT	6.56
		TOUCHTONE COMMUNICATIONS	3/08/21	LONG DISTANCE	0.04
		CITY OF WELLINGTON	3/05/21	FICA TRANSFER	1,255.17
			3/05/21	MEDICARE TRANSFER	293.55
		CITY OF WELLINGTON	3/05/21	KPERS RETIREE-EMPL CONTRI	159.02
			3/05/21	KPERS INS CONTRIBUTION	196.62
			3/05/21	KPERS CONTRIBUTION	916.69
			3/05/21	KPERS T2 CONTRIBUTION	201.24
			3/05/21	KPERS T3 CONTRIBUTION	626.04
		UNIFIRST CORPORATION	3/12/21	UNIFORM RENTAL	179.99
			3/12/21	UNIFORM RENTAL	179.99
				TOTAL:	17,427.89
WATER PRODUCTION	ELEC-WATER.-WWTP	AMERICAN WATER WORKS ASSOCIATION	3/08/21	MEMBERSHIP RENEWAL AWWA AS	75.00
		GRAINGER	3/12/21	ELEMENT INTAKE FILTER WTR	53.50
		HACH COMPANY	3/12/21	LAB CHEMICALS & SUPPLIES	516.52
		KANOKLA NETWORKS	3/08/21	TELEPHONE BILL 03/01-3/31/	50.79
		O'REILLY AUTOMOTIVE STORES, INC.	3/12/21	FILTER REPLACEMENT BLOWER	51.85
		JOHN DEERE FINANCIAL	3/10/21	FITTINGS NEW PUMP INSTALL	47.06
			3/10/21	PARTS NEW PUMP INSTALL	59.69
			3/10/21	PARTS NEW PUMP INSTALL	16.95
			3/10/21	NEW PUMP INSTALL	135.97
			3/10/21	PARTS ALUM PUMP REPLACEMEN	10.56
			3/10/21	PARTS ALUM PUMP REPLACEME	16.53
			3/10/21	WORK JACKET	41.99
			3/10/21	THER,PSTATS	14.99
			3/10/21	ANTI-GEL DIESEL EQUIP & BA	123.92
			3/10/21	BIBS & GLOVES FOR WATER PL	69.98

DEPARTMENT	FUND	VENDOR NAME	DATE	DESCRIPTION	AMOUNT
		TOUCHTONE COMMUNICATIONS	3/08/21	LONG DISTANCE	5.40
		USA BLUEBOOK	3/12/21	FILTER REPLACEMENT BLOWR P	84.04
			3/12/21	TDS METER & PH METER WTR P	890.27
		CITY OF WELLINGTON	3/05/21	FICA TRANSFER	377.06
			3/05/21	MEDICARE TRANSFER	88.19
		CITY OF WELLINGTON	3/05/21	KPERS INS CONTRIBUTION	65.02
			3/05/21	KPERS CONTRIBUTION	188.92
			3/05/21	KPERS T3 CONTRIBUTION	387.78
				TOTAL:	3,371.98
WATER DISTRIBUTION	ELEC-WATER.-WWTP	ASCENSION MEDICAL GROUP VIA CHRISTI, P	3/08/21	EMPLOYEE PHYSICALS	100.00
		CHEW PLUMBING & HEATING, INC.	3/12/21	1 X 6 REPAIR CLAMP	8.37
		M6 CONCRETE ACCESSORIES	3/12/21	CONCRETE RAKES	67.10
		GRAINGER	3/12/21	METAL DETECTOR ALUMINUM	76.53
			3/12/21	CONE LIGHT, YELLOW FLASHIN	36.68
			3/12/21	TRIGGER START TORCH	80.87
		HACH COMPANY	3/12/21	CHEMKEY, 25 PIECE CHOLRINE	249.00
			3/12/21	FREGHT	50.22
		KANSAS ONE-CALL SYSTEM, INC	3/12/21	LOCATES	78.00
		KELLY COMPLIANCE	3/12/21	EMPLOYEE DRUG SCREEN	50.25
		O'REILLY AUTOMOTIVE STORES, INC.	3/12/21	BASIC HALOGEN HEADLIGHT BU	31.84
		JOHN DEERE FINANCIAL	3/10/21	TRIANGLE TRUCK FLARE KIT	12.00
			3/10/21	KIT FUSE ATM MINI BLADE	24.99
			3/10/21	PVC 2 HOLE STRAP 2"	3.99
			3/10/21	SHIRTS,HOODIE, BOOTS	518.89
			3/10/21	FOAM TRIPLE EXPAND SEALANT	9.98
			3/10/21	HANDLE WOOD 54" TAPERED	14.97
			3/10/21	ANTIFREEZE	105.90
			3/10/21	ANTIFREEZE TESTER	1.99
			3/10/21	PRESSURE SWITCH, 2" GAUGE,	115.97
			3/10/21	COLD WEATHER PROTECT CLOTH	104.85
		SALINA SUPPLY COMPANY	3/12/21	ASSORTED REPAIR CLAMPS	1,921.62
		SALISBURY SUPPLY CO. INC.	3/12/21	DIAMOND VANTAGE 26X165X1 C	799.99
			3/12/21	A-Z DIAMOND BLADE	263.90
			3/12/21	V-BELT FOR TS800	42.00
			3/12/21	M18 FUEL SAWZALL RECIPROCA	419.00
		SOUTH CENTRAL HYDRAULICS	3/12/21	REPAIR TRASH PUMP, REPL MO	1,226.46
		TOUCHTONE COMMUNICATIONS	3/08/21	LONG DISTANCE	7.56
		CITY OF WELLINGTON	3/05/21	FICA TRANSFER	809.15
			3/05/21	MEDICARE TRANSFER	189.24
		CITY OF WELLINGTON	3/05/21	KPERS INS CONTRIBUTION	132.30
			3/05/21	KPERS T3 CONTRIBUTION	1,173.53
		UNIFIRST CORPORATION	3/12/21	UNIFORM RENTAL	22.82
			3/12/21	UNIFORM RENTAL	22.82
		WHITAKER AGGREGATES, INC.	3/12/21	BLUE 1 1/2 CRUSHER RUN ROC	380.04
		WICHITA WINWATER WORKS CO INC.	3/12/21	12" CI/PL	61.40
			3/12/21	PVC X CTS COUPLING	280.66
			3/12/21	3/4 X 1 PJ CTSCCTS UNION	239.70
			3/12/21	CTS X FIP ADAPTER	185.22
			3/12/21	CTS X CTS UNION 3/4 PK COU	182.56
			3/12/21	4X12 REPAIR CLAMP	462.12
			3/12/21	FCC CLAMP	282.04
			3/12/21	FCC CLAMP	83.20
				TOTAL:	10,929.72
WASTEWATER TREATMENT	ELEC-WATER.-WWTP	A AND A AUTO SUPPLY	3/08/21	OIL FILTERS & OIL	38.92

DEPARTMENT	FUND	VENDOR NAME	DATE	DESCRIPTION	AMOUNT
		HAWKINS SERVICES LLC	3/12/21	FIRE EXTINGUISHER MAINTENA	322.00
		HOBBS MECHANICAL, INC.	3/12/21	FILTERS FOR FURNANCE	14.20
		KANSAS DEPT OF HLTH & ENV	3/12/21	CLASS 2 WATER CERTIFICATE RE	20.00
		JOHN DEERE FINANCIAL	3/10/21	CONCRETE DRILL BIT	7.99
			3/10/21	WATER JUG DALTON	16.52
			3/10/21	1/4 INCH TAP	9.99
			3/10/21	PUSH BROOMS WITH SCRAPERS	79.98
		TOUCHTONE COMMUNICATIONS	3/08/21	LONG DISTANCE	0.55
		USA BLUEBOOK	3/12/21	DISINFECTANT SPRAY	14.98
		WALMART COMMUNITY	3/04/21	WTR, COFFEE, ENVELOPES, TAPE,	51.45
		WATER ENVIRONMENT FED.	3/12/21	WEF MEMBERSHIP JOHN O'BRYA	85.00
		CITY OF WELLINGTON	3/05/21	FICA TRANSFER	468.68
			3/05/21	MEDICARE TRANSFER	109.60
		CITY OF WELLINGTON	3/05/21	KPERS INS CONTRIBUTION	79.98
			3/05/21	KPERS CONTRIBUTION	197.10
			3/05/21	KPERS T2 CONTRIBUTION	163.47
			3/05/21	KPERS T3 CONTRIBUTION	348.83
		UNIFIRST CORPORATION	3/12/21	UNIFORM RENTAL	23.58
			3/12/21	UNIFORM RENTAL	23.58
			TOTAL:		2,076.40
NON-DEPARTMENTAL ELECT	ELEC-WATER.-WWTP	HAMPEL OIL	3/12/21	GALLONS OF DIESEL @\$2.20 P	5,500.00
			3/12/21	STATE FUEL TAX	650.00
			3/12/21	KS ENVIRONMENT FEE	25.00
			3/12/21	FEDERAL OIL SPILL LIABILIT	5.25
			TOTAL:		6,180.25
NON-DEPARTMENTAL	ELEC-WATER.-WWTP	CITY OF WELLINGTON	3/05/21	FICA TRANSFER	267.98
			3/05/21	MEDICARE TRANSFER	62.67
		CITY OF WELLINGTON	3/05/21	KPERS INS CONTRIBUTION	45.79
			3/05/21	KPERS CONTRIBUTION	406.15
			TOTAL:		782.59
ELECTRIC DISTRIBUTION	MULTI-YR CPTL. IMP	RCB BANK	3/08/21	LEASE PAYMENT BUCKET TRUCK	4,458.01
			TOTAL:		4,458.01
WATER PRODUCTION	MULTI-YR CPTL. IMP	MCCROMETER INC	3/12/21	FLOW METER REPLACEMENT	5,261.00
			TOTAL:		5,261.00
WATER DISTRIBUTION	MULTI-YR CPTL. IMP	PROFESSIONAL ENGINEERING	3/12/21	WLGN B ST WTR LINE IMPRV	10,360.00
			TOTAL:		10,360.00
ELECTRIC CONSTRUCTION	MULTI-YR CPTL. IMP	PROFESSIONAL ENGINEERING	3/12/21	BNSF ELEC LINE RELOCATION	1,112.50
			TOTAL:		1,112.50
NON-DEPARTMENTAL	SANITATION LANDFIL	KANSAS PAYMENT CENTER	3/05/21	CHILD SUPPORT	309.23
		CITY OF WELLINGTON	3/05/21	TRANSFER WITHHOLDING	942.54
			3/05/21	FICA TRANSFER	933.33
			3/05/21	MEDICARE TRANSFER	218.29
		CITY OF WELLINGTON	3/05/21	KPERS CONTRIBUTION	76.41
			3/05/21	KPERS T2 CONTRIBUTION	147.45
			3/05/21	KPERS T3 CONTRIBUTION	651.62
		CITY OF WELLINGTON	3/05/21	TRANSFER STATE WITHHOLDING	454.65
		CARL B. DAVIS, TRUSTEE	3/05/21	GARNISHMENT-INC. W/H	258.46
			TOTAL:		3,991.98

DEPARTMENT	FUND	VENDOR NAME	DATE	DESCRIPTION	AMOUNT		
SANITATION COLLECTION	SANITATION LANDFIL	ASCENSION MEDICAL GROUP VIA CHRISTI, P	3/08/21	EMPLOYEE PHYSICALS	200.00		
		DOWNING SALES & SERVICE, INC.	3/12/21	PARTS WINCH TRUCK #115	126.83		
		GREENO INDUSTRIES	3/12/21	DUMPSTER REPAIRS	292.00		
		KELLY COMPLIANCE	3/12/21	EMPLOYEE DRUG SCREEN	99.25		
		JOHN DEERE FINANCIAL	3/10/21	BOTTLED WATER	179.28		
			3/10/21	KNIFE, PAINT, SIGN NUMBER &	33.45		
			3/10/21	MISC NUTS/BOLTS/LOCK PINS	32.58		
			3/10/21	BIB COVERALLS TOMMY NORRIS	69.99		
			3/10/21	GRINDING WHEELS	11.97		
			3/10/21	WELDING ROD	34.99		
			3/10/21	LONG-HNDLED MAGNET/ATTRACT	21.99		
			3/10/21	MATERIALS AIR COMPRESSOR	16.76		
		PROCOM LMR, INC.	3/12/21	REPAIRS TO SPARE RADIO	158.02		
		SOUTH HAVEN LP GAS, INC.	3/12/21	PROPANE	393.80		
		TOUCHTONE COMMUNICATIONS	3/08/21	LONG DISTANCE	0.27		
		WALMART COMMUNITY	3/04/21	ICE MELT & SUPPLIES	57.51		
			3/04/21	DIESEL TREATMENT	29.88		
		CITY OF WELLINGTON	3/05/21	FICA TRANSFER	701.26		
			3/05/21	MEDICARE TRANSFER	164.01		
		CITY OF WELLINGTON	3/05/21	KPERS INS CONTRIBUTION	106.33		
			3/05/21	KPERS CONTRIBUTION	112.95		
			3/05/21	KPERS T2 CONTRIBUTION	217.97		
			3/05/21	KPERS T3 CONTRIBUTION	612.33		
		UNIFIRST CORPORATION	3/12/21	UNIFORM CLEANING	29.43		
			3/12/21	UNIFORM CLEANING	<u>29.43</u>		
				TOTAL:		3,732.28	
		TRANSFER STATION	SANITATION LANDFIL	TEMPORARY VENDO MATT TOMPKINS	3/12/21	MATT TOMPKINS: BOOT REIMBU	150.00
				SW MGMT FUND-KDHE	3/12/21	\$1.00 PER TON STATE FOR C&	131.41
				PLUMB THICKET LANDFILL	3/12/21	TONS OF HOUSEHOLD TRASH	40,040.21
				JOHN DEERE FINANCIAL	3/10/21	50FT EXTEN.CORD & INSULATE	31.98
					3/10/21	CHAIN & LINKS	29.73
					3/10/21	50 FT EXTENSION CORD & INS	53.63
					3/10/21	EXTENSION CORD	27.99
					3/10/21	CABLE TIES	4.49
				SOUTH CENTRAL SOLID WASTE AUTHORITY	3/12/21	RE'Q MNTH SO CENT SOLID WS	413.25
				TOUCHTONE COMMUNICATIONS	3/08/21	LONG DISTANCE	3.13
				WALMART COMMUNITY	3/04/21	MISC. SUPPLIES	64.39
					3/04/21	MISC SUPPLIES & TOOLS	121.01
				CITY OF WELLINGTON	3/05/21	FICA TRANSFER	232.07
					3/05/21	MEDICARE TRANSFER	54.28
CITY OF WELLINGTON	3/05/21			KPERS INS CONTRIBUTION	39.58		
	3/05/21			KPERS T3 CONTRIBUTION	350.99		
UNIFIRST CORPORATION	3/12/21			UNIFORM CLEANING	17.13		
	3/12/21			UNIFORM CLEANING	<u>17.13</u>		
				TOTAL:		41,782.40	
NON-DEPARTMENTAL	WELLINGTON MUNIC.A			CITY OF WELLINGTON	3/05/21	TRANSFER WITHHOLDING	196.35
			3/05/21	FICA TRANSFER	118.18		
			3/05/21	MEDICARE TRANSFER	27.64		
		CITY OF WELLINGTON	3/05/21	KPERS T2 CONTRIBUTION	118.42		
		CITY OF WELLINGTON	3/05/21	TRANSFER STATE WITHHOLDING	<u>84.48</u>		
				TOTAL:		545.07	
WELLINGTON AIRPORT	WELLINGTON MUNIC.A	JOHN DEERE FINANCIAL	3/10/21	LEAF BLOWER & TRIMMER PART	33.96-		
			3/10/21	PARTS REPAIR LEAF BLOWER	33.96		

DEPARTMENT	FUND	VENDOR NAME	DATE	DESCRIPTION	AMOUNT
		RURAL WATER DISTRICT #2	3/08/21	WATER SERVICE 2/1-2/28/21	30.00
		MILL CREEK LUMBER OF KANSAS INC.	3/12/21	PAINT & SUPPLIES FOR TERMI	347.56
			3/12/21	PARTS & SUPPLIES FOR TERMI	42.16
			3/12/21	CREDIT-TOGGLE SWITCHES	3.56-
			3/12/21	PARTS & SUPPLIES FOR TERMI	1.78
			3/12/21	PARTS & SUPPLIES FOR TERMI	36.55
			3/12/21	CREDIT-2 COVER PLATES	1.78-
		TOUCHTONE COMMUNICATIONS	3/08/21	LONG DISTANCE	0.27
		CITY OF WELLINGTON	3/05/21	FICA TRANSFER	118.18
			3/05/21	MEDICARE TRANSFER	27.64
		CITY OF WELLINGTON	3/05/21	KPERS INS CONTRIBUTION	19.74
			3/05/21	KPERS T2 CONTRIBUTION	<u>175.06</u>
				TOTAL:	793.60
NON-DEPARTMENTAL	CLAIMS	KANSAS STATE TREASURER	3/12/21	REINSTATEMENT FEE	0.00
			3/12/21	JUDICIAL EDUCATION	22.00
			3/12/21	LAW ENFORCEMENT TRAIN FEE	307.50
			3/12/21	COMM CORREC SUPERVISION FE	33.50
			3/12/21	SEAT BELT SAFETY FUND	<u>20.00</u>
				TOTAL:	383.00
NON-DEPARTMENTAL	SCCDAT GRANT	CITY OF WELLINGTON	3/05/21	TRANSFER WITHHOLDING	289.74
			3/05/21	FICA TRANSFER	200.08
			3/05/21	MEDICARE TRANSFER	46.79
		CITY OF WELLINGTON	3/05/21	TRANSFER STATE WITHHOLDING	<u>112.51</u>
				TOTAL:	649.12
DFC GRANT	SCCDAT GRANT	KORI BOYD	3/12/21	MILEAGE 2/16/21-3/8/21	59.24
		SCCDAT	3/12/21	PSA WORLD WIDE-NDAFW SWAG	529.69
			3/12/21	MICROSOFT FEE	109.49
			3/12/21	CRUSADER YEARBOOK	175.00
			3/12/21	SOUTH HAVEN YEARBOOK	100.00
		CITY OF WELLINGTON	3/05/21	FICA TRANSFER	200.08
			3/05/21	MEDICARE TRANSFER	<u>46.79</u>
				TOTAL:	1,220.29

DEPARTMENT	FUND	VENDOR NAME	DATE	DESCRIPTION	AMOUNT
------------	------	-------------	------	-------------	--------

===== FUND TOTALS =====

001	GENERAL FUND				122,929.09
114	EMPLOYEE BENEFIT CONTR				116,255.67
115	SPECIAL LIABILITY EXPENSE				5,012.00
325	CAPITAL IMPROVEMENT				5,264.36
402	GOLF COURSE				3,753.88
415	ELEC-WATER.-WWTP				65,194.77
425	MULTI-YR CPTL. IMP.&EQU.				21,191.51
430	SANITATION LANDFILL UTILI				49,506.66
441	WELLINGTON MUNIC.AIRPORT				1,338.67
601	CLAIMS				383.00
603	SCCDAT GRANT				1,869.41

GRAND TOTAL: 392,699.02

TOTAL PAGES: 14

SELECTION CRITERIA

SELECTION OPTIONS

VENDOR SET: 01-CITY OF WELLINGTON
VENDOR: All
CLASSIFICATION: All
BANK CODE: All
ITEM DATE: 0/00/0000 THRU 99/99/9999
ITEM AMOUNT: 99,999,999.00CR THRU 99,999,999.00
GL POST DATE: 0/00/0000 THRU 99/99/9999
CHECK DATE: 3/01/2021 THRU 3/12/2021

PAYROLL SELECTION

PAYROLL EXPENSES: NO
EXPENSE TYPE: N/A
CHECK DATE: 0/00/0000 THRU 99/99/9999

PRINT OPTIONS

PRINT DATE: GL Post Date
SEQUENCE: By Department
DESCRIPTION: Distribution
GL ACCTS: NO
REPORT TITLE: COUNCIL R E P O R T 03/01/2021 - 03/12/2021
SIGNATURE LINES: 0

PACKET OPTIONS

INCLUDE REFUNDS: YES
INCLUDE OPEN ITEM:NO

FEBRUARY 2021		CLERK'S REPORT				CITY OF WELLINGTON		
FUND	BEGINNING CASH BALANCE	CURRENT REVENUES	CHANGE IN RECEIVABLES	CURRENT EXPENDITURES	CHANGE IN PAYABLES	ENDING CASH BALANCE	TOTAL ENCUMBRANCE	UNENCUMBERED BALANCE
001-GENERAL	2,755,978.01	533,326.84	185	603,486.28	-5,870.70	2,679,762.87	68,911.00	2,610,851.87
112-AMBULANCE & FF EQUIP	96,049.64	69.65	0	5,397.39	0	90,721.90	0	90,721.90
113-LIBRARY	998.99	0	0	0	0	998.99	0	998.99
114-EMPLOYEE BENEFIT	114,686.17	97,363.58	0	121,860.39	27,453.39	117,642.75	0	117,642.75
115-SPECIAL LIABILITY EXP	50,296.28	490.46	0	24	0	50,762.74	0	50,762.74
121-HOSPITAL SALES TAX	0	127,533.95	0	127,533.95	0	0.00	0	0.00
131-SPECIAL CITY HIGHWAY	108,930.85	59.92	0	21,484.72	0	87,506.05	0	87,506.05
133-SPEC ALCOHOL & DRUG	5,432.07	6.26	0	0	0	5,438.33	0	5,438.33
134-SPECIAL PARKS & REC	23,515.95	21.23	0	0	0	23,537.18	0	23,537.18
137-TOURISM & CONVENTION	15,056.02	5,167.31	0	0	0	20,223.33	0	20,223.33
201-BOND & INTEREST	582,363.31	196.37	0	19,199.75	0	563,359.93	0	563,359.93
202-HOSP- EMERG. DEPT BONDS	160,000.00	20,000.00	0	0	0	180,000.00	100,000.00	80,000.00
311-HOUSING AUTH RESERVE	121,075.26	0	0	0	0	121,075.26	0	121,075.26
324-EQUIPMENT RESERVE	80,735.96	29,510.16	0	29,995.69	0	80,250.43	0	80,250.43
325-CAPITAL IMPROVEMENT	101,381.86	80,911.88	0	4,034.36	-182.93	178,076.45	5,450.00	172,626.45
401-AUDITORIUM A/C FUND	39,285.06	32.35	0	0	0	39,317.41	0	39,317.41
402-GOLF COURSE	68,238.91	35,878.39	0	29,313.63	540	75,343.67	0	75,343.67
415-ELEC-WATER.-WWTP	1,586,206.77	1,159,203.52	-274,974.26	1,477,533.10	-3,431.44	1,539,420.01	66,216.65	1,473,203.36
423-UTILITY SYSTEM CONST.	227,164.53	186.88	0	0	0	227,351.41	0	227,351.41
425-MULTI-YR CPTL. IMP. & EQUIP	2,457,550.92	82,372.91	0	22,514.62	0	2,517,409.21	230,051.49	2,287,357.72
430-SANITATION LANDFILL UTIL	229,065.74	168,987.43	3,803.05	142,483.31	520	252,286.81	0	252,286.81
434-SANITATION EQUIP RESERVE	26,000.41	25,200.87	0	2,430.56	0	48,770.72	0	48,770.72
441-WELLINGTON AIRPORT	32,333.18	8,343.38	0	28,847.28	-12,456.70	-627.42	180,511.00	-181,138.42
501-SPECIAL IMPROVEMENT	117,466.09	153.56	0	0	0	117,619.65	0	117,619.65
504-SANITATION IMPROVEMENT	913,311.18	786.74	0	0	0	914,097.92	38,989.30	875,108.62
505-POLICE VIN FUND	7,301.64	1,704.22	0	200	0	8,805.86	0	8,805.86
506-CEM CAP IMPROV RESERVE	2,494.75	1.16	0	0	0	2,495.91	0	2,495.91
507-JUDICIAL/LAW ENF. IMPROV.	650.05	195.17	0	0	0	845.22	0	845.22
601-CLAIMS	-9,792.45	0	441.21	0	-12,816.62	-23,050.28	0	-23,050.28
602-PUBLIC LIBRARY TRUST	155,293.69	127.76	0	0	0	155,421.45	0	155,421.45
603-SCCDAT GRANT	5,896.30	13,936.65	0	6,902.51	0	12,930.44	0	12,930.44
604-MUNI. AUD. RENOVATION TR	30,693.11	31.6	6.36	0	0	30,718.35	0	30,718.35
606-RECREATION TRUST	11.44	23.04	23.03	0	0	11.45	0	11.45
607-REGIONAL PARK TRUST	24,473.99	327	7.91	0	0	24,793.08	0	24,793.08

FUND	BEGINNING CASH BALANCE	CURRENT REVENUES	CHANGE IN RECEIVABLES	CURRENT EXPENDITURES	CHANGE IN PAYABLES	ENDING CASH BALANCE	TOTAL ENCUMBRANCE	UNENCUMBERED BALANCE
608-WELL. MUNI. GOLF CRSE TR	27,018.70	16.49	0.25	0	0	27,034.94	0	27,034.94
609-HAZMAT RESPONSE FUND	7,656.83	6.94	0	0	0	7,663.77	0	7,663.77
610-WELL. MUNI. AIRPORT TRUST	1,505.67	1.26	0.02	0	0	1,506.91	0	1,506.91
611-FIRE PREVENTION & EDUC.	427.65	0.35	0	0	0	428.00	0	428.00
612-WELL. AMB. SERVICE TRUST	4,354.96	3.32	0	0	0	4,358.28	0	4,358.28
613-NICHOLS FAMILY TRUST	655.04	0.32	0	269.91	0	385.45	0	385.45
614-DRUG TAX DIST. TRUST	8,681.69	7.03	0	0	0	8,688.72	0	8,688.72
617-EMPLOYEE COMMUNITY SVC	2.93	0	0	0	0	2.93	0	2.93
620-ANNIE HAMILTON TRUST	1,726.67	1.42	0	0	0	1,728.09	0	1,728.09
622-MILDRED SHARE MCLEAN TR	5,316.11	4.38	0	0	0	5,320.49	0	5,320.49
623-CEMETERY BEAUTY. TRUST	13,125.83	310.66	0	0	0	13,436.49	0	13,436.49
624-MAUSOLEUM MAINT. TRUST	14,850.86	12.22	0	0	0	14,863.08	0	14,863.08
626-CARA SAUNDERS BEAUTY. TR	525.01	0.43	0	0	0	525.44	0	525.44
628-PERM. CEMETERY ENDOW.	154,270.77	124.69	0	0	0	154,395.46	0	154,395.46
629-DRUG AWARENESS FUND	10,587.32	8.27	0	1,000.00	0	9,595.59	0	9,595.59
630-ASSET FORFEITURE	4,333.86	3.57	0	0	0	4,337.43	0	4,337.43
BALANCES	10,385,185.58	2,392,651.59	-270,507.43	2,644,511.45	-6,245.00	10,397,588.15	690,129.44	9,707,458.71

ELECTRIC/WATERWORKS/SEWAGE UTILITY OPERATING FUND

DEPARTMENT

	Feb. 2021 EXPENDITURES	Feb. 2021 ENCUMBRANCE	TOTAL 2021 EXPENDITURES	PRIOR YR P.O. ADJUSTMENT	YTD 2021 TOTAL CASH EXPENSED
WATER EXPENDITURES:					
932 Production	32,529.06	0.00	61,224.86	0.00	61,224.86
933 Distribution	28,940.59	0.00	53,214.02	0.00	53,214.02
934 Wastewater Treatment	27,641.44	0.00	58,391.92	0.00	58,391.92
952 Transfers	88,131.25	0.00	176,262.50	0.00	176,262.50
998 Contingency	0.00	0.00	0.00	0.00	-
999 Non-Departmental	15,901.51	0.00	37,035.81	0.00	37,035.81
999 Debt Service	45,376.90	0.00	45,376.90	0.00	45,376.90
TOTAL WATER AND SEWER	238,520.75	0.00	431,506.01	0.00	431,506.01
ELECTRIC EXPENDITURES:					
930 Production	526,957.31	0.00	593,563.27	0.00	593,563.27
931 Distribution	74,789.61	0.00	157,754.01	0.00	157,754.01
951 Transfers	148,251.34	0.00	296,502.68	0.00	296,502.68
998 Contingency	0.00	0.00	0.00	0.00	-
999 Non-Departmental	80,621.97	0.00	202,906.15	0.00	202,906.15
999 Debt Service	408,392.12	0.00	408,392.12	0.00	408,392.12
TOTAL ELECTRIC	1,239,012.35	0.00	1,659,118.23	0.00	1,659,118.23
TOTAL E/WW/SEW UTIL. EXPENDITURES	1,477,533.10	0.00	2,090,624.24	0.00	2,090,624.24
REVENUES:					
Water Sales	93,353.33		286,102.59		
Sewer Service	183,235.95		363,286.93		
Interest Earnings	945.36		1,542.32		
Bond Proceeds & Accrued Interest	0.00		0.00		
Miscellaneous Revenues	697.37		22,648.86		
TOTAL WATER & SEWER REVENUE	278,232.01		673,580.70		
Sales of Electricity	866,231.87		1,839,177.26		
Interest Earnings	8,508.20		13,880.90		
Bond Proceeds & Accrued Interest	0.00		0.00		
Miscellaneous Revenues	6,231.44		203,794.86		
TOTAL ELECTRIC REVENUE	880,971.51		2,056,853.02		
TOTAL E/WW/SEW. UTILITY REVENUE	1,159,203.52		2,730,433.72		
BALANCES IN RESERVE ACCOUNTS:					
Principal & Interest	786,568.55				
Temp Note Investments	0.00				
Sewer Improvement Reserve	767,706.27				
Cost of Issuance	0.00				
Emergency Depre. Reserve	400,000.00				
Bond Reserve Account	345,430.00				
Utility Reserve Account-Water/Elec	6,994,844.34				
TOTAL	9,294,549.16				

SUBMITTED BY:

MARY M. GREEN, CITY TREASURER

		Jan	Feb	Mar	Apr	May	June	July	Aug	Sept	Oct	Nov	Dec	2021YTD	2020YTD
Criminal Cases		188	186											374	352
Accident Cases		10	12											22	30
Totals		198	195											393	382
Cases Active		34	27												92
Cases Cleared		160	169												291
Calls for Service		1157	1124											2281	2546
Animal Bites		0	4											4	3
Animal Calls		50	66											116	148
Animals Impounded															
Miles Driven		12735	12102											24837	24186
SRO Cases		8	2											10	10
Traffic Violations		51	64											115	196
GROUP A OFFENSES															
<i>Crimes Against Persons</i>															
Simple Assault	13B	1	0												0
Aggravated Assault	13A	0	0												0
Aggravated Assault LEO	13A	0	0												0
Simple Battery	13B	8	8												9
Aggravated Battery	13A	2	2												1
Aggravated Battery LEO	13A	0	0												0
Aggravated Criminal Threat	13C	0	0												0
Blackmail	210	0	0												0
Criminal Threat	13C	0	1												3
Harrassment by Telephone	13C	1	1												0
Homicide	09A	0	0												0
Homicide (Justifiable)	09C	0	0												0
Homicide (Vehicular)	90Z	0	0												0
Kidnapping	100	0	0												0
Stalking	13C	0	0												0
Robbery	120	0	0												0
<i>Crimes Against Property</i>															
Arson	200	2	0												2
Burglary (Dwelling)	220	3	0												3
Burglary (Non-Dwelling)	220	1	1												1
Criminal Damage to Property	290	7	10												16
Forgery	250	0	0												1
Theft (Shoplifting)	23C	3	2												9
Theft (From Buildings)	23D	1	1												10
Theft (From Coin Machines)	23E	0	0												0
Theft (Larceny From Motor Veh)	23F	4	2												13
Theft (Vehicle Parts)	23G	0	0												2
Theft (All Other)	23H	2	4												11
Theft (Identity)	26A	0	1												1
Theft (Fraud)	26A	0	0												0
Theft (Criminal Use Financial Card)	26B	0	0												1
Theft (Motor Vehicle)	240	3	0												3
Theft (Embezzlement)	270	0	0												0
Drug Offense	35A	2	4												7
Impersonation	26A	0	0												0
<i>Sex Offenses</i>															

AMBULANCE MONTHLY FINANCIAL REPORT

February 2021

	MEDICLAIMS	TRI-TECH/COLLECTIONS	s
Year 2021 Su Co Subsidy -			\$ 20,163.33
ARSI		\$ 1,061.47	
KS Set Off			
Patient/Other/Insurance Payments +		\$ 948.74	
			Total Revenue
Total Revenue Received =	\$ 41,002.83	\$ 2,010.21	\$ 43,013.04
Prior Month Ending Balance +	\$ 23,081,550.19	\$ 206,780.84	
Billed	\$ 92,104.00		TOTAL CHARGES
Vehicle Assessment charges +	\$ 5,500.00		\$ 97,604.00
Patient Payments -	\$ (1,410.22)		
Insurance Payments -	\$ (39,432.61)		
Vehicle Assessment payments -	\$ (160.00)		
Accounts to Collection Agency -	\$ (8,095.50)		
Medicare Write-Off's -	\$ (16,417.03)		
Sequestration Reduction -	\$ -		
Blue Cross Write-Off -	\$ (2,591.97)		
Other Write-Off's (bankruptcies, deceased) -	\$ (17.73)		
Other Insurance Write-Off -	\$ (2,355.86)		
Medicaid Write-Off -	\$ (8,220.97)		
Refunds +			
Other Payments -			
REPORT BALANCE =	\$ 23,141,455.13	\$ 208,791.05	
AGED RECEIVABLES BALANCE			
Month-To Date-Runs: Year 2020		146	
Year-To-Date-Runs: Year 2020		314	
Month-To-Date Runs: Year 2021		186	
Year-To-Date Runs: Year 2021		375	

Community Events	0	0	0	2
Public Education	0	1	1	1
Fire Investigations	1	2	3	2
Revenue				
Ambulance Revenue	40,258	43,013	83,271	91,564
County Subsidy for EMS	20163	20163	40326	43834
Fire District 6	600	200	800	400
Fire District 7	115	363	478	387
Kansas Turnpike	0	0	0	0
Grants/Donations	250	0	250	100
Haz Mat Response	0	0	0	0
Total Monthly Revenue	61,386	63,739	125,125	136,285



317 South Washington
Wellington, Kansas 67152
(620) 326-3871

Permit Report

02/01/2021 - 02/28/2021

Permit Date	Parcel Address	Total Fees	Permit Type	Description	Valuation
2/25/2021	1003 MYLES CT, Wellington, KS 67152	\$166.14	Building	New Swimming Pool	26,000.00
2/24/2021	924 N POPLAR ST, Wellington, KS 67152	\$21.10	Building	New Carport Install	1,000.00
2/23/2021	217 N HASLET ST, Wellington, KS 67152	\$315.00	COMBINATION PERMIT	Install (40) Solar Panels on roof, Electrical wiring included	68,534.00
2/16/2021	621 W 22ND ST, Wellington, KS 67152	\$214.62	Building	New Room Addition	38,000.00
2/10/2021	217 W 8TH ST, Wellington, KS 67152	\$0.00	Building	Gen Remodel - Comm. Bldg	55,000.00
2/4/2021	616 N SYLVAN LN, Wellington, KS 67152	\$134.10	Building	Remodel of Residence	20,000.00
2/2/2021	313 E 12TH ST, Wellington, KS 67152	\$36.10	Building	New Porch Build	2,500.00
		\$887.06			211,034.00

Total Records: 7

3/1/2021



Case Report

02/01/2021 - 02/28/2021

Case Date	Address	Violation	Status
2/25/2021	220 S B	Inoperable Vehicle	Open
2/25/2021	218 S B	Excessive Debris	Open
2/25/2021	724 N C	Excessive Debris	Open
2/25/2021	719 N Washington Ave	Excessive Debris	Open
2/24/2021	1317 E Lincoln	Structure unfit for human occupancy	Open
2/11/2021	207 N Olive	Dangerous Structure	Open
2/10/2021	603 N C Street	Tree Limb Issue	
2/2/2021	1203 S A	Excessive Debris	Open
2/1/2021	910 S G	Inoperable Vehicle	Open
2/1/2021	901 S H	Excessive Debris	Open
2/1/2021	513 N C	Excessive Debris	Closed

Total Records: 11

3/1/2021

Park Board
City of Wellington, KS
Minutes of the Meeting
February 8, 2021

Members Present: Roy Kabureck, Council Member Robert Hamilton, Annarose White (via video)
Members Absent: Pam Hinman, Sandy McNevin
Staff Present: Jeremy Jones-Director of Public Works, Tracy Thomas-Admin.
Asst.
Seth Henton-Park Supervisor
Guests Present: NA

CALL TO ORDER

Director Jones called the meeting to order at 5:45 p.m. The Pledge of Allegiance was recited and attendance was taken.

APPROVAL OF MINUTES

A motion was made by Roy Kaburek to approve the minutes from the January 11, 2021 meeting, seconded by Robert Hamilton with all in favor.

ITEMS OF BUSINESS

CIP 5 Year Plan ~

Director Jones had provided information in the agenda packet regarding the CIP 5 Year Plan for the Public Works Departments. The Board reviewed and discussed the 2021 approved purchases within the Park, Special Park and Aquatic Center funds. The Board also reviewed the budgeted items for 2022, 2023, 2024, and 2025 as well as the 325 CIP Capital Improvement Plan. Maintenance of the Aquatic Center was discussed, including the concern for the loss of water that was occurring during last year's pool season and the funds being set aside each year for the water slide replacement. The pool was built in 1998 and opened in 1999, therefore it is reaching the age that certain replacements will be needed. Park Staff plan to repaint the pool this year and an inspection will be completed on the water slides this year. Annarose White inquired about scheduling further discussions to plan in advance for replacement of the pool before additional issues arise.

The Board discussed the priority of certain projects and the continued need for "quality of life" projects such as the proposed splash pad. Robert Hamilton expressed his support of these types of projects and acknowledged that it is difficult finding the funding resources as well as a percentage of donations. He suggested the City create a general development fund that would provide a conduit to save additional funds for these projects. Annarose White added that the Wellington Community Foundation has sub accounts underneath their umbrella and each sub account tracks the money for certain projects. The bank collects and holds the money but does not provide the accounting services.

Robert Hamilton inquired about the dam at Woods Park. Director Jones stated that a study had been completed and will be discussed further now that we have a cost estimate and a direction from the consulting engineer. The proposed sidewalk project at Woods Park was discussed - this would provide a sidewalk connecting to the existing sidewalk around Donut Bay. Robert Hamilton suggested including the dam improvement project with the sidewalk project. The Board discussed improvements to the Worden Park detention pond. Director Jones reported that the City should be hearing soon if we will be awarded grant funding for the proposed sidewalk on East Highway 160. Roy Kabureck inquired whether the budget includes the Armory building flooring improvements that were recently brought up by Cody White. Director Jones stated this project would have a funding request submitted.

STAFF REPORTS

Seth Henton reported his Staff continues removing dead, damaged and diseased trees from the Parks - mainly Woods Park, Melody Bowl and Worden Park. They have removed approximately 20 trees over the Winter. The intent is to replace these trees over time. The Cemetery Staff have also been removing some trees in Prairie Lawn Cemetery. Seth Henton reported his Staff worked with the Electric Department recently to install new LED lights in the Armory building, which made a significant difference on the brightness in the building. Park Staff have been completing annual maintenance on the equipment to prepare for Spring. The John Deere mower was taken to Winfield Prairieland Partners to have it assessed and an estimate was provided on what needs to be done. A rebuild is budgeted for this machine. Seth Henton has ordered chemicals for the ballfields and those will be applied when the weather is right. He is also working on quotes for paint for the Aquatic Center and making contact to schedule the water slide inspection.

REPORTS OF BOARD MEMBERS

Annarose White stated she will be meeting with Director Jones this week. She has a draft of the splash pad donation brochure and is gathering input for that project.

Director Jones reported that the City Council recently passed Resolutions/Ordinances to remove the term limits on the various City Boards. Ursula Goff has applied for the open position on the Park Board that will be created when Pam Hinman's term expires in April 2021.

Roy Kabureck inquired about the deteriorating condition of the stage inside the Memorial Auditorium. Director Jones stated that a permanent stage extension and lift are priorities in the future projects/improvements for the building.

Robert Hamilton inquired about holding events at the Memorial Auditorium and the possibility of setting up a vaccine clinic at that location. Director Jones stated that he had recently been contacted by an individual proposing to set up a "drive through" entertainment event. There are too many unknowns at this time with holding events but the hope is that, in the near future, more events will be allowed to occur. Some discussion was held on the property that is for sale adjacent north of the Memorial Auditorium and the possibilities for the use of this property by the City.

ADJOURN

Roy Kabureck made a motion to adjourn the meeting, seconded by Robert Hamilton with all in favor. Meeting adjourned at 6:57 p.m.

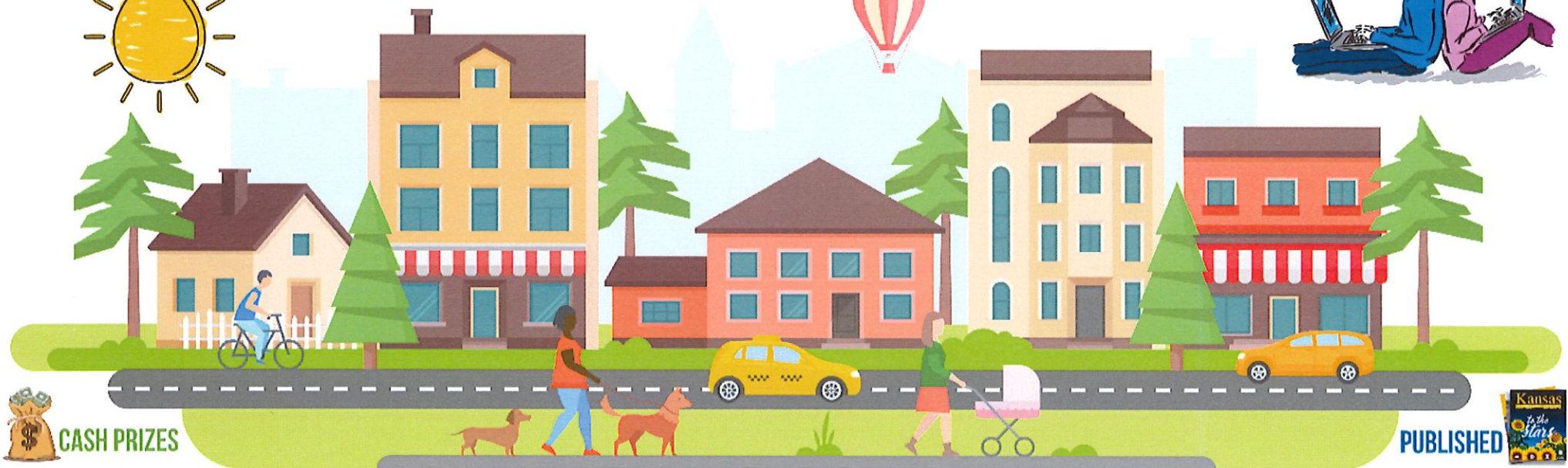
THE LEAGUE INVITES ALL KANSAS 7TH
GRADERS TO JOIN OUR ESSAY CONTEST!

TELL US WHAT MAKES
YOUR CITY YOUR 'HOME.'



DEADLINE FOR SUBMISSIONS IS
APRIL 30, 2021.

CONTEST RULES & INSTRUCTIONS:
WWW.LKM.ORG/ESSAYCONTEST



CASH PRIZES

PUBLISHED





#IfIWereMayor #CivicEd #CivicYouth



“My City, My Home” Invitation & Instructions

The League of Kansas Municipalities invites all Kansas 7th graders to join our essay contest!

Please submit your essay describing what you enjoy about your community for a **chance to win \$125 and have your idea published** in the *Kansas Government Journal*. One young leader will be named the overall winner for the state of Kansas and win \$250. The winners and their teacher will be invited to Lawrence for a special ceremony with local leaders and state legislators on June 18, 2021.

Become an **active participant in your community**, better the lives of your fellow citizens, and discover the rewards it provides.

CONTEST RULES

- Who:** All Kansas students enrolled in the 7th grade during the 2020-2021 school year.
- What:** Each student may submit one essay not to exceed 500 words. Memos must be typed.
- When:** Deadline is April 30, 2021
- Where:** Upload Memos at www.lkm.org/EssayContest
- How:** Memos will be evaluated based on creativity, clarity, sincerity of thought, and proper grammar.
- Why:** In an effort to encourage youth engagement, the League reserves the right to republish the memos and pictures of each student to connect Kansas youth in their work.

Check out the League's full CURRICULUM for youth civic education. Our program includes lesson plans, activity books, and a resource guide. All materials are interactive on the web and free to download.



TOM SCHWINN POST NO. 90, INC.
THE AMERICAN LEGION
124 West Lincoln
Wellington, Kansas 67152



Shane Shields, City Manager
317 South Washington
Wellington, Kansas 67152

February 25, 2021

Dear Mr. Shields,

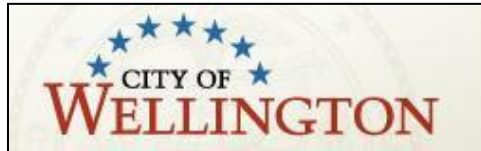
The American Legion Post 90 is requesting an Interdepartmental / Other adjustment on the usage rate of our utilities. With the Covid-19 Pandemic having created many unique problems and challenges for all businesses, they are especially difficult for the small businesses and non-profit such as the American Legion Post 90.

The American Legion Post 90 provides many services to not only local Veterans but also to our City, County and State. Examples of some of the things we do include, provide donations for Operation Holiday, provide holiday gifts to local Veterans in local care homes along with Winfield Veterans Home and Robert Dole Medical Center. We provide Donations to the Wellington Fire Department for the Fire Safety Program held at Wellington Schools, Donated new cabinet locks for their ambulances. Donations to Project Prom, We donated the proceeds from some our monthly breakfasts (pre-Covid-19) for local Babe Ruth Baseball teams and the High School group to go to Carnegie Hall. (though we did the cooking, we allowed them serve, do dishes and sell raffle tickets at these events. We have a medical equipment loaning program and donated equipment to Dr. McCue to start up medical equipment closet. We host the Veterans Day Program yearly at the High School and the Memorial Day Program (along with assisting with the Ave. of Flags). We provide Military Honors at Local Veterans funerals.

As you can see we provide a wide variety of services to Veterans and our Community and we wish to continue providing these types of services.

Thank You for your consideration in this matter.

Bernard T. Maston
American Legion Post 90 Commander



Memorandum

To: Honorable Mayor and Council
From: Shane J. Shields, City Manager
Date: March 12, 2021
Re: American Legion Utility Service Type Change Request

Bernard T. Maston, Commander of American Legion Post 90, has submitted a request to the City to change the utility service type for the American Legion to Interdepartmental/Other from Commercial service type. (See attached request)

The City has 5 utility service types. The services are Residential, Commercial, Industrial, Interdepartmental/Other, and Economic Development. Per Ordinance No. 4183 adopted in October of 2015, the Interdepartmental/Other service shall be defined as service to any institution or organization as directed by the City Council of the City of Wellington. This service type includes Not for Profit, which was a separate type in previous years, but still only those as directed by the City Council.

The Interdepartmental/Other service type includes all City facilities and departments. There are several other institutions or organizations that are in the Interdepartmental/Other service type. They are listed below.

Chisholm Trail Museum, Wellington Public Library, Wellington Recreation Commission, Panhandle Railroad Museum, Wellington Food Bank, Wellington Senior Center, and VFW Post 881.

The VFW Post 881 was approved by Council in October 2020. Prior to that, the last approval was for the Panhandle Railroad Museum in 2005.

The current Interdepartmental/Other service type is a meter charge of \$20.00 and a rate of \$0.026/kWh. The current charge for the American Legion as Commercial –3 Phase is a meter charge of \$35.00 and a rate of \$0.046/kWh.

This request is submitted to the City Council for consideration. Again, as per the ordinance, the Interdepartmental/Other service shall be defined as service to any institution or organization as directed by the City Council.

Staff would encourage careful consideration be given any request for Interdepartmental/Other service type.

(Published in the *Wellington Daily News* on March 24, 2021 and March 31, 2021)

CHARTER ORDINANCE NO. _____

A CHARTER ORDINANCE OF THE CITY OF WELLINGTON, KANSAS EXEMPTING THE CITY FROM THE PROVISIONS OF K.S.A. 12-621 RELATING TO SEWAGE DISPOSAL WORKS IMPROVEMENTS AND THE ISSUANCE OF BONDS THEREFOR AND PROVIDING SUBSTITUTE AND ADDITIONAL PROVISIONS RELATING THERETO.

WHEREAS, Article 12, Section 5 of the Constitution of the State of Kansas (the "Act") provides that cities may exercise certain home rule powers, including passing charter ordinances which exempt such cities from the acts of the Kansas Legislature; and

WHEREAS, the City of Wellington, Kansas (the "City") is a city, as defined in the Act, duly created and organized, under the laws of the State of Kansas; and

WHEREAS, K.S.A. 12-621 is part of an enactment of the Kansas Legislature relating to sewage disposal works improvements and the issuance of bonds for such purposes, which enactment is applicable to the City, but is not uniformly applicable to all cities within the State of Kansas; and

WHEREAS, the governing body of the City desires, by charter ordinance, to exempt the City from the provisions of K.S.A. 12-621, and to provide substitute and additional provisions therefor.

NOW, THEREFORE, BE IT ORDAINED BY THE GOVERNING BODY OF THE CITY OF WELLINGTON, KANSAS AS FOLLOWS:

Section 1. Exemption-K.S.A. 12-621. The City, by the power vested in it by the Act, hereby elects to exempt itself from and make inapplicable to it, the provisions of K.S.A. 12-621 and does hereby provide the following substitute and additional provisions in place thereof:

The governing body of the City may operate and maintain sewers and disposal works for the collection and purification of the sewage of the city, or of any part thereof, including joint operation and maintenance of such facilities through interlocal cooperation with another city or cities. The costs and expenses of building the same, in whole or in part, may be borne by the city as a whole, and may be paid out of the general revenue fund; or if the governing body determines, general obligation bonds of the City may be issued for such purpose.

Section 2. Severability. Any provision or section of this Charter Ordinance is deemed or ruled unconstitutional or otherwise illegal or invalid by any court of competent jurisdiction, such illegality or invalidity shall not affect any other provision of this Charter Ordinance. In such instance, this Charter Ordinance shall be construed and enforced as if such illegal or invalid provision had not been contained herein.

Section 3. Effective Date. This Charter Ordinance shall be published once a week for two consecutive weeks in the official City newspaper, and shall take effect sixty (60) days after final publication,

unless a petition signed by a number of electors of the City equal to not less than ten percent (10%) of the number of electors who voted at the last preceding regular City election shall be filed in the office of the City Clerk, demanding that this Charter Ordinance be submitted to a vote of the electors, in which event this Charter Ordinance shall take effect when approved by a majority of the electors voting at an election held for such a purpose.

[BALANCE OF THIS PAGE INTENTIONALLY LEFT BLANK]

PASSED with at least a two-thirds (2/3) vote of the entire governing body of the City of Wellington, Kansas, on March 16, 2021 and **SIGNED** by the Mayor.

(SEAL)

Jim Valentine, Mayor

ATTEST:

Heidi Theurer, City Clerk

[BALANCE OF THIS PAGE INTENTIONALLY LEFT BLANK]

Table 1

**City of Wellington, KS
KDHE Sewer Loan**

Outstanding Debt Service of Certain Maturities

Payment Date	Principal	Interest Rate	Service Fee Interest	Total Debt Service
1-Mar-21				
1-Sep-21	347,146.00	2.840	106,650.02	453,796.02
1-Mar-22	352,075.47	2.840	101,720.55	453,796.02
1-Sep-22	357,074.94	2.840	96,721.08	453,796.02
1-Mar-23	362,145.41	2.840	91,650.61	453,796.02
1-Sep-23	367,287.87	2.840	86,508.15	453,796.02
1-Mar-24	372,503.36	2.840	81,292.66	453,796.02
1-Sep-24	377,792.91	2.840	76,003.11	453,796.02
1-Mar-25	383,157.57	2.840	70,638.45	453,796.02
1-Sep-25	388,598.41	2.840	65,197.61	453,796.02
1-Mar-26	394,116.50	2.840	59,679.52	453,796.02
1-Sep-26	399,712.96	2.840	54,083.06	453,796.02
1-Mar-27	405,388.88	2.840	48,407.14	453,796.02
1-Sep-27	411,145.40	2.840	42,650.62	453,796.02
1-Mar-28	416,983.67	2.840	36,812.35	453,796.02
1-Sep-28	422,904.84	2.840	30,891.18	453,796.02
1-Mar-29	428,910.08	2.840	24,885.94	453,796.02
1-Sep-29	435,000.61	2.840	18,795.41	453,796.02
1-Mar-30	441,177.62	2.840	12,618.40	453,796.02
1-Sep-30	447,442.34	2.840	6,353.68	453,796.02
1-Mar-31				
1-Sep-31				
1-Mar-32				
1-Sep-32				
1-Mar-33				
1-Sep-33				
1-Mar-34				
1-Sep-34				
1-Mar-35				
1-Sep-35				
1-Mar-36				
1-Sep-36				
1-Mar-37				
1-Sep-37				
1-Mar-38				
1-Sep-38				
1-Mar-39				
1-Sep-39				
1-Mar-40				
1-Sep-40				
1-Mar-41				
1-Sep-41				
Totals	7,510,564.84		1,111,559.54	8,622,124.38
Redemption	15-Jun-21			
Accrual	1-Mar-21			
Days	104.00			
Ratio	0.58			
Principal	7,510,564.84			
Interest	61,620.01			

Table 2
Alternative A: Front-End Savings (Stand Alone)

\$7,780,000
City of Wellington, KS
General Obligation Refunding Bonds
KDHE Sewer Loan
Series 2021

Estimated Debt Service to Maturity

Payment Date	Principal	Interest Rate*	Interest	Total Debt Service
1-Mar-21				
1-Sep-21	0.00	0.250	10,348.14	10,348.14
1-Mar-22	325,000.00	0.300	24,508.75	349,508.75
1-Sep-22	430,000.00	0.300	24,021.25	454,021.25
1-Mar-23	430,000.00	0.350	23,376.25	453,376.25
1-Sep-23	430,000.00	0.350	22,623.75	452,623.75
1-Mar-24	430,000.00	0.450	21,871.25	451,871.25
1-Sep-24	435,000.00	0.450	20,903.75	455,903.75
1-Mar-25	435,000.00	0.500	19,925.00	454,925.00
1-Sep-25	435,000.00	0.500	18,837.50	453,837.50
1-Mar-26	435,000.00	0.600	17,750.00	452,750.00
1-Sep-26	440,000.00	0.600	16,445.00	456,445.00
1-Mar-27	440,000.00	0.700	15,125.00	455,125.00
1-Sep-27	440,000.00	0.700	13,585.00	453,585.00
1-Mar-28	440,000.00	0.800	12,045.00	452,045.00
1-Sep-28	445,000.00	0.800	10,285.00	455,285.00
1-Mar-29	445,000.00	0.900	8,505.00	453,505.00
1-Sep-29	445,000.00	0.900	6,502.50	451,502.50
1-Mar-30	450,000.00	1.000	4,500.00	454,500.00
1-Sep-30	450,000.00	1.000	2,250.00	452,250.00
1-Mar-31		1.100	0.00	0.00
1-Sep-31		1.100	0.00	0.00
1-Mar-32		1.200	0.00	0.00
1-Sep-32		1.200	0.00	0.00
1-Mar-33		1.300	0.00	0.00
1-Sep-33		1.300	0.00	0.00
1-Mar-34		1.400	0.00	0.00
1-Sep-34		1.400	0.00	0.00
1-Mar-35		1.550	0.00	0.00
1-Sep-35		1.550	0.00	0.00
1-Mar-36		1.700	0.00	0.00
1-Sep-36		1.700	0.00	0.00
1-Mar-37		1.850	0.00	0.00
1-Sep-37		1.850	0.00	0.00
1-Mar-38		2.000	0.00	0.00
1-Sep-38		2.000	0.00	0.00
1-Mar-39		2.100	0.00	0.00
1-Sep-39		2.100	0.00	0.00
1-Mar-40		2.150	0.00	0.00
1-Sep-40		2.150	0.00	0.00
1-Mar-41		2.200	0.00	0.00
1-Sep-41		2.200	0.00	0.00
Totals	7,780,000.00		293,408.14	8,073,408.14
	0.00			
Dated Date:	15-Jun-21		Net Interest Co:	0.9434%
Settlement Date:	15-Jun-21		Arb Yield	0.7441%
Bond Years:	39,347,444		Accrued Interest	0.00
Average Life:	5.06			

*City of Sublette GO Bond Sale 2-24-21 + 10 Basis Points

**Table 3
Alternative A: Front-End Savings (Stand Alone)**

**\$7,780,000
City of Wellington, KS
General Obligation Refunding Bonds
KDHE Sewer Loan
Series 2021** **A**

Savings Report

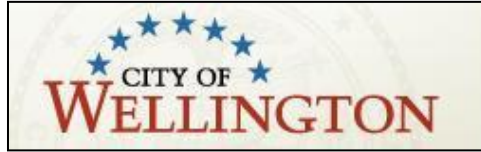
Period Ending 31-Dec	Refunding Debt Service	Issuer Cash	Outstanding Debt Service	Cash Savings
2021	10,348.14	0.00	453,796.02	443,447.88
2022	803,530.00		907,592.04	104,062.04
2023	906,000.00		907,592.04	1,592.04
2024	907,775.00		907,592.04	-182.96
2025	908,762.50		907,592.04	-1,170.46
2026	909,195.00		907,592.04	-1,602.96
2027	908,710.00		907,592.04	-1,117.96
2028	907,330.00		907,592.04	262.04
2029	905,007.50		907,592.04	2,584.54
2030	906,750.00		907,592.04	842.04
2031	0.00		0.00	0.00
2032	0.00		0.00	0.00
2033	0.00		0.00	0.00
2034	0.00		0.00	0.00
2035	0.00		0.00	0.00
2036	0.00		0.00	0.00
2037	0.00		0.00	0.00
2038	0.00		0.00	0.00
2039	0.00		0.00	0.00
2040	0.00		0.00	0.00
2041	0.00		0.00	0.00
	8,073,408.14	0.00	8,622,124.38	548,716.24
	Accrued Interest:			0.00
	Rounding Amount:			0.00
	Net Cash Savings			548,716.24
	Present Value of Savings:			547,385.85
	Percent of Refunded Issue:			7.29%

Table 4
Alternative A: Front-End Savings (Stand Alone)

\$7,780,000
City of Wellington, KS
General Obligation Refunding Bonds
KDHE Sewer Loan
Series 2021

Sources and Uses of Funds

<u>Sources</u>		
Certificates		7,780,000.00
Original Issue Discount		0.00
Forward Purchase Contract		0.00
Issuer Cash		0.00
Accrued Interest		0.00
Total Sources of Funds		7,780,000.00
<u>Uses</u>		
Escrow Deposit		7,572,184.85
Deposit to Bond Fund		0.00
Underwriter's D	1.00%	77,800.00
Costs of Issuan	1.67%	130,015.16
Rounding Amount		0.00
Total Uses of Funds		7,780,000.00
Bond Counsel		43,627.58
Financial Advisor		43,627.58
Documents		8,725.52
Paying Agent		6,550.00
Rating		25,000.00
Miscellaneous		2,484.49
Totals		130,015.16



Memorandum

To: Honorable Mayor and Council
From: Shane J. Shields, City Manager
Date: March 12, 2021
Re: State Revolving Fund Loan

The City has an existing State Revolving Fund (SRF) Loan from 2008 that was issued for sewer related projects. All projects were completed with the major project being the construction of the Wastewater Treatment Plant. There is the option to issue General Obligation Refunding Bonds to pay off the SRF loan. John Haas, the City's financial advisor, has provided an estimate of a potential net cash savings of \$548,716.24 if refunding is done. That estimate can change, of course, based on interest rates. A Charter Ordinance is necessary for authorization to proceed. Mr. Haas will be present at the council meeting to update the information and provide additional details.

Staff recommendation is to pass the Charter Ordinance that will provide the authorization to move forward at a later date.

(Published in the Wellington Daily News, March 24, 2021) 1t

ORDINANCE NO. _____

AN ORDINANCE CHANGING THE BOUNDARIES OF THE ZONING DISTRICT AND AMENDING THE ZONING MAP AS ADOPTED BY ORDINANCE NO. 3826

BE IT ORDAINED BY THE GOVERNING BODY OF THE CITY OF WELLINGTON, KANSAS:

SECTION I

That pursuant to Notice and Hearing before the Wellington Planning Commission on Tuesday ~ February 23, 2021, and action which was taken by the same, zoning of the following described property, to-wit:

Beginning at the SE Corner of SE Quarter of Section 18, Township 32 South, Range 1 East of the 6th P. M., Sumner County, Kansas, thence North along the East line of said Quarter 637.79 feet to a point, thence South 89°15'32" West 35 feet to the point of beginning, thence North 00°16'29" West 467.10 feet to the South line of Railroad Right-of-way, thence West along the South line of Railroad Right-of-way a distance of 1345.70 feet, thence South 07°51'10" East 372.06 feet, thence North 89°15'32" East 1291.95 feet to the point of beginning, containing 12.42 acres±

is changed from "A-L" Agricultural District to "I-2" Heavy Industrial District and the Zoning Administrator is hereby directed to amend the zoning map to conform herewith.

SECTION II

This Ordinance shall take effect from and after its passage, approval and publication in the official City newspaper, as provided by law.

APPROVED AND ADOPTED at Wellington, Kansas this 16th day of MARCH 2021.

Jim Valentine, Mayor

(SEAL)

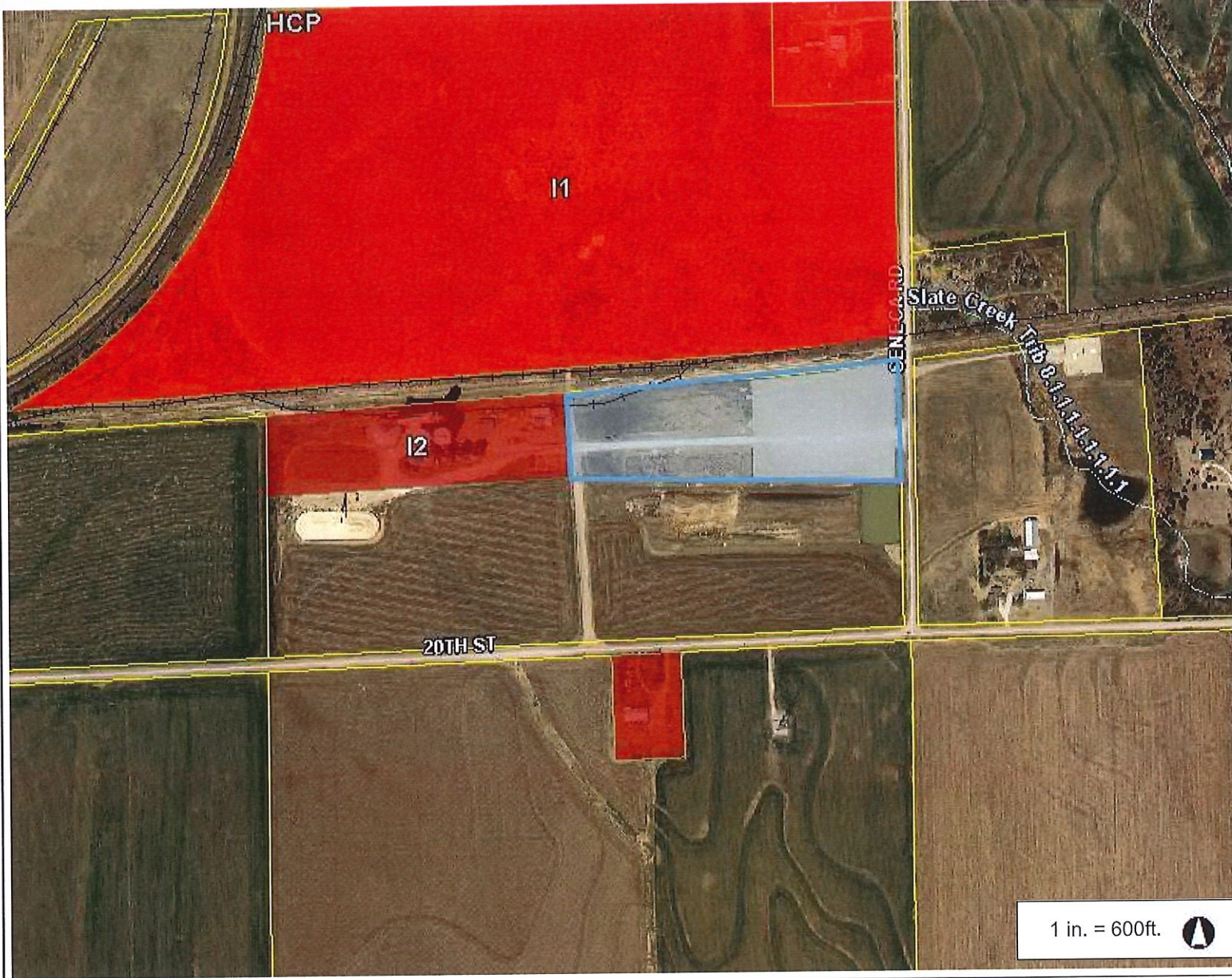
ATTEST:

Heidi Theurer, City Clerk

FORM APPROVED:

Shawn DeJarnett, City Attorney

Wellington, KS



Legend

- Zoning
- AL - Agricultural
- C1 - Light Commercial
- C2 - General Commercial
- C3 - Central Business
- CO - Office & Institution
- CS - Highway Service
- HCP - Planned Highway Developm
- I1 - Light Industrial
- I2 - Heavy Industrial
- MP - Manufactured Home Park
- MS - Manufactured Home Subdivisi
- P.U.D. - Planned Urban Developme
- R1 - Single-Family Dwelling
- R2 - Two-Family Dwelling
- R3 - Multiple-Family Dwelling
- RS - Residential Suburban
- County Road
- City Road
- Lake Road
- Railroad
- Parcel
- House Number
- City Limit
- River
- Water Boundary

Notes

This map is a user generated static output from an Internet mapping site and is for reference only. Data layers that appear on this map may or may not be accurate, current, or otherwise reliable.

THIS MAP IS NOT TO BE USED FOR NAVIGATION



1 in. = 600ft.



Building & Codes Department
19 Industrial Ave
Wellington, KS 67152
Ph#620-326-3871

TO: Wellington City Council
FROM: Jamie Cornejo, Engineering Aide
RE: Rezone Request - 766 East 20th Ave. South (Scoular Grain)
DATE: March 11,2021

Curt Engel, acting agent for Scoular Grain, located *766 East 20th Ave. South*, has filed a request for rezoning with the City of Wellington. The property owners are seeking a change from AL-Agriculture to I2-Heavy Industrial. The property, in particular, consists of approximately 12AC. Currently, the property has been used for agricultural purposes, but the owners have proposed to use this section of property as a part of the existing business operations on the property. The rezone request would bring the proposed use into compliance with current city zoning regulations.

The lot size is more than adequate for their proposed business operations and any future development. Most of the nearby properties are of agricultural zoning classification and any development would be of little detriment to the surrounding properties.

After review, City Staff recommends rezone approval with the Planning Commission voting unanimously for approval as presented at the February 23, 2021 meeting.

Action requested: Motion to approve and the Mayor votes on zoning matters.

Respectfully Submitted,

Jamie Cornejo
Engineering Aide
City of Wellington

ORDINANCE NO. _____

AN ORDINANCE REPEALING CURRENT WELLINGTON LAKE RECREATION AREA REGULATIONS AND ORDINANCES AND ENACTING NEW REGULATIONS

BE IT ORDAINED BY THE GOVERNING BODY OF THE CITY OF WELLINGTON, KANSAS:

SECTION I

That Article III of Chapter 30 of the Code of the City of Wellington, Kansas is hereby repealed. Further, Ordinances #3660, 3681, 3926, 4037 and 4189 are hereby repealed.

SECTION II

That Article III of Chapter 30 of the Code of the City of Wellington, Kansas is as follows, to-wit:

Sec. 30-102. - Establishment.

There is hereby established an area to be known as the Wellington Lake Recreation Area located on real estate owned by the City of Wellington, Kansas, in Sumner County, Kansas.

(Code 1996, § 12-301; Ord. No. 3660, § 1)

Sec. 30-103. - Declaration of policy.

It is hereby declared to be the policy of the city to provide to the residents of the city and its environs as well as the present water customers of the city a supply of potable water from the waters of Wellington Lake and at the same time promote the safe and prudent use by the public of The Wellington Lake Recreation Area for recreational purposes in a manner compatible with the maintenance of the waters of Wellington Lake as a municipal water supply.

(Code 1996, § 12-302; Ord. No. 3660, § 3)

Sec. 30-104. - Definitions.

The following words, terms and phrases, when used in this article, shall have the meanings ascribed to them in this section, except where the context clearly indicates a different meaning:

Alcoholic liquor means alcohol, spirits, wine, beer and every liquid or solid, patented or not, containing alcohol, spirits, wine or beer and capable of being consumed as a beverage by a human being, but shall not include any cereal malt beverage.

Bicycle means every device propelled by human power upon which any person may ride, having two tandem wheels either of which is more than 14 inches in diameter.

Cereal malt beverage as used in this act includes "enhanced cereal malt beverage" and is defined as cereal malt beverage and enhanced cereal malt beverage as those terms are defined in K.S.A. 41-2701, and amendments thereto, as defined by and such terms, in this article, shall include beer containing not more than six percent alcohol by volume when such beer is sold by a retailer licensed under the Kansas cereal malt beverage act.

City means the City of Wellington, Kansas.

Commercial activity means any activity which involves the buying and selling of any goods, wares and merchandise or the providing of any service of any nature whatsoever, or the renting or leasing of boats or other recreational equipment or sporting goods of any sort for a valuable consideration.

Concessionaire means any person, firm, association or corporation that by written contract with the Governing Body of the city has been granted the right to conduct a commercial activity in the Wellington Lake Recreation Area.

Craft means any boat or vessel designed for use on water.

Household means all members of one family living together at a single residence.

Lake means all waters impounded by the dam located in the Wellington Lake Recreation Area.

Motor vehicle means every vehicle, other than a motorized bicycle or a motorized wheelchair, that is self-propelled.

Motorcycle means every motor vehicle, including autocycles, having a seat or saddle for the use of the rider and designed to travel on not more than three wheels in contact with the ground, but excluding a tractor.

Motor-driven cycle means every motorcycle, including every motor scooter, with a motor which produces not to exceed five brake horsepower, and every bicycle with a motor attached, except a motorized bicycle or an electric-assisted bicycle.

Nonresident means any person who does not maintain a permanent residence within Sumner County, Kansas.

Officer means any person authorized or designated by the City to enforce all rules and regulations set forth in this article, including members of the City Police Department, the County Sheriff's Department and the State Highway Patrol as well as any person authorized or designated by the State or the United States government or any agency thereof to enforce any state or federal laws, rules or regulations applicable to the Wellington Lake Recreation Area or any activities permitted or carried on in the recreation area.

Lake Supervisor means the person appointed by the City Manager to oversee the operation and maintenance of the recreational facilities in the area and the use of the area, including the use of the waters of Wellington Lake for recreational purposes, by the public.

Resident means any person who maintains a permanent residence within Sumner County, Kansas.

Roadway means those areas in the recreation area which are specifically designed and improved for vehicular travel.

Vehicle means every device in, upon, or by which any person or property is or may be transported or drawn upon a highway, except devices moved by human power or used exclusively upon stationary rails or tracks.

(Code 1996, § 12-303; Ord. No. 3660, § 4)

Sec. 30-105. - Recreation permit.

(a) All persons desiring to use the Wellington Recreation Area for any purpose other than for sightseeing and fishing shall first obtain a recreation permit for the person's vehicle from the Lake Supervisor or the Lake Supervisor's duly authorized agent and pay the fees established therefore. Additional permits may be purchased for vehicles owned by members of the same household for the prescribed fees. The permit shall be issued for the vehicle owned by the person requesting the permit and stickers showing that a permit has been issued shall be provided for attachment to the vehicle for which the same was issued. The permit shall entitle the owner of the vehicle to use the facilities of the recreation area for recreational purposes. Vehicles entering the recreation area without a permit for any purpose other than sightseeing and fishing shall be in violation of this section and shall be subject to penalties set forth in section 30-118.

(b) Fees for recreation permits and additional permits are as set by the Governing Body and on file in the City Clerk's office.

(c) The fees for permits shall be in addition to fees established in sections 30-106, 30-107(h), and 30-109 for specific activities.

(Code 1996, § 12-304; Ord. No. 3681, § 1; Ord. No. 3926, 4-5-2005; Ord. No. 4172, § I, 12-16-2014)

Sec. 30-106. - Boating; rules and regulations; fees.

(a) *Boat operation permitted; exceptions.* Subject to the rules and regulations and upon the payment of boating fees hereinafter set forth, the operation of boats on the waters of Wellington Lake shall be permitted at all times except during those periods of time designated by the Kansas Department of Wildlife, Parks and Tourism as seasons for the hunting of water fowl in the county, provided however, that during such hunting seasons boats propelled only by human power and boats with trolling motors may be used with extreme caution for the purpose of placing or removing decoys and blinds. Hydroplanes, aero propellers, and houseboats shall not be permitted on the waters of Wellington Lake.

(b) *Licenses.* Before any boat shall be operated on the waters of Wellington Lake a license for such boat shall be obtained from the Lake Supervisor. If the boat to be licensed is a motor boat or a sail powered boat satisfactory evidence that the boat is insured for public liability and property damage with a single limit coverage of not less than \$25,000 shall be furnished to the Lake Supervisor before a license is issued. No license shall be issued unless the appropriate fee as hereinafter set forth has been collected by the Lake Supervisor.

(c) *Hours.* No boats, except fishing boats being operated at a speed that produces no visible wake, shall be operated on the waters of Wellington Lake between one-half hour after sunset and one-half hour before sunrise.

(d) *Launching.* Motorboats shall be launched on and removed from the waters of Wellington Lake only at designated launching areas. Small human powered boats may be launched where convenient.

(e) *Life jackets.* Approved life jackets sufficient in number to supply one jacket to each occupant of the boat shall be carried on all boats. Persons 12 years of age and under shall actually wear an approved life jacket at all times such person is on a boat.

(f) *Traffic.* Boats shall travel in a generally counterclockwise direction on the waters of Wellington Lake; boats shall turn to the right when meeting another boat; when overtaking another boat the overtaking boats shall turn to the left; boats approaching each other at right angles shall give the right-of-way to the boat on the right; motor powered boats shall at all times give the right-of-way to sailboats and human powered boats.

(g) *Rough waters.* Notwithstanding contrary language in this article, no person shall operate a boat on the waters of Wellington Lake when the waters of the lake are sufficiently rough to be considered dangerous.

(h) *Swimming.* No boat shall proceed into any area of the waters of Wellington Lake, which is designated and marked as a swimming area.

(i) *Boat trailers.* Boat trailers shall be parked only in the areas of the Wellington Lake recreation area that are specifically designated and marked for boat trailer parking.

(j) *Transportation for hire.* No person, other than a duly authorized concessionaire, shall carry or transport any person upon the waters of Wellington Lake for hire, or for any valuable consideration whatsoever.

(k) *Duty to render assistance.* All owners and/or operators of boats on the waters of Wellington Lake shall render assistance at times of emergency and in the enforcement of these rules and regulations when called upon by the Lake Supervisor or the Lake Supervisor's duly authorized representative.

(l) *Boat docks.* Boat docks are provided on Wellington Lake for the purpose of loading and unloading onto and from boats, and no privately owned boat docks shall be constructed or maintained on the waters of Wellington Lake.

(m) *Water skiing.* Water skiing shall be permitted on the waters of Wellington Lake in those areas designated for water skiing; when meeting or passing other boats, skiers shall take and maintain a position behind the skiers towing boat until the other boat is safely passed; skiers shall be retrieved from the water as soon as possible after the skier falls from the skis into the water; no boat shall be operated with ski lines behind the boat unless a skier is being towed or retrieved from the water. Water skiers shall wear approved ski vests.

(n) *Boat fees.* Boat fees shall be as set by the Governing Body and on file in the City Clerk's office. Such fees which shall be in addition to fees charged for a recreation permit, shall be charged for boating on the waters of Wellington Lake except for boats used only for fishing purposes.

(Code 1996, § 12-305; Ord. No. 3660, § 6; Ord. No. 3926, 4-5-2005; Ord. No. 4172, § I, 12-16-2014)

Sec. 30-107. - Camping; rules and regulations; fees.

- (a) Camping shall be permitted in those parts of the Wellington Lake Recreation Area which are designed, marked and posted for camping and in no other parts of the recreation area, by any person who holds a valid recreation permit for the Wellington Recreation Area. Primitive camping will be permitted in areas designated therefore, but will not be permitted in camping areas served by electricity. Such camping shall be in conformity with the camping fees hereinafter specified. No advance reservations will be made for the utilization of any camping area or campsite.
- (b) Any person desiring to set up camp shall first pay the Lake Supervisor the appropriate camping fee in accordance with the schedule of fees hereinafter set forth and obtain from the Supervisor the assignment of a camp site location and number, and the camper shall use the assigned site and no other site.
- (c) No camper or other person shall make any connection to water outlets in the Wellington Recreation Area prior to paying the appropriate fees or for a period longer than necessary to fill water tanks or storage facilities on a trailer, camper or recreational vehicle.
- (d) Only vehicles using electrical outlets provided for campers shall be parked near such outlets. Any other vehicles parked near said electric outlets will be required to pay camping fees for the additional vehicle. No 50 amp electrical adapters shall be plugged into or used in 30 amp outlets.
- (e) Shelter houses in the Wellington Lake Recreation Area shall not be used for camping, nor shall any electric outlets in said shelter houses be used to supply electrical power to trailers, campers, or other recreational vehicles.
- (f) No vehicle, trailer, camper or other recreation vehicle shall be parked in boat ramp areas or under shelter houses in the Wellington Lake Recreation Area.
- (g) During cold weather, public restrooms in the recreation area will be closed and will not be available for use by campers; campers using the recreation area during the time when the public restrooms are closed must provide or make provision for their own restroom facilities.
- (h) Camping fees shall be as set by the Governing Body and on file in the City Clerk's office. Such fees, in addition to fees charged for a Recreation Permit, shall be charged for camping in the Wellington Lake Recreation Area.
- (i) Camping in the Wellington Lake Recreation Area between the first day of waterfowl season each year and the following March 1 shall be allowed only in the areas designated as "Old West" and "Shade".

(j) All campsites in the Wellington Lake Recreation Area will be closed for camping the month of February each year for maintenance by Lake staff.

(k) All trailers, campers and other recreational vehicles shall be placed or parked on top of the improved camping pads provided, in the same direction as the pad lays.

(Code 1996, § 12-306; Ord. No. 3660, § 7; Ord. No. 3775, § 1, 2-4-1997; Ord. No. 3834, § I, 12-18-2001; Ord. No. 4172, § I, 12-16-2014; Ord. No. 4189, § I, 12-1-2015)

Sec. 30-108. - Fishing; rules and regulations.

(a) Fishing shall be permitted in the waters of Wellington Lake by all persons. Those who are required to hold a valid fishing license issued by the state must do so. No unattended fishing lines, including drop lines, may be used between sunrise and sunset, and no trout lines or link lines may be used at any time.

(b) To ensure quality fishing in the waters of Wellington Lake in the future the size and possession limits of fish taken shall be as provided by state law.

(Code 1996, § 12-307(c); Ord. No. 3681, § 2; Ord. No. 3801, § I, 5-4-1999; Ord. No. 3926, 4-5-2005)

Sec. 30-109. - Hunting; rules and regulations; fees.

(a) The hunting of water fowl in the Wellington Lake Recreation Area shall be permitted during seasons established by the state for the hunting of waterfowl in the county, and at no other time. The hunting of upland game birds, fur-bearing animals, deer and predatory animals, as well as the trapping of fur-bearing animals in the recreation area is at all times prohibited, except as conducted by the City of Wellington to control and prevent damage to real or personal property.

(b) The display or discharge of firearms in the Wellington Lake Recreation Area, except during a state-established waterfowl season, is prohibited.

(c) Those persons who are required to hold a valid hunting license issued by the state, must also hold a valid Wellington Recreation Area waterfowl hunting permit and all persons must hold a valid recreation permit for the Wellington Lake Recreation Area. Hunting is allowed only in those areas designated by the Lake Supervisor as blind locations. Each year the Lake Supervisor will designate an individual with rights to a specific blind location, referred to as the blind holder. All hunters shall be a blind holder or have the permission of the blind holder to hunt or otherwise use a specific blind location. Hunters may also rent locations designated by the Lake Supervisor as rental blinds upon the payment of fees as set forth herein.

(d) The fees shall be as set by the Governing Body and on file in the City Clerk's office. Upon the payment of the fees and the showing by the hunter that, if required, holds a valid hunting license issued by the state and such waterfowl stamps as are required by the state and the government of the United States, the recreation area supervisor, or the recreation area supervisor's duly authorized agent shall issue to the hunter a license to hunt waterfowl in the recreation area in accordance with the rules and regulations in this article.

(Code 1996, § 12-308; Ord. No. 3681, § 9; Ord. No. 4172, § I, 12-16-2014)

Sec. 30-110. - Picnicking; use of shelter houses.

(a) Picnicking shall be permitted in all areas of the Wellington Lake Recreation Area, with purchase of the recreation permit, which are safe and suitable for that purpose and in shelter houses therein located; picnic tables and shelter houses in the area are available for use on a first come first served basis, and no advance reservations shall be made for the utilization of the same except the large rock shelter located at Eagle Cove and the shelter at Loga Vista Cabin. All picnickers shall be responsible for the policing of the picnic area or shelter they have used to see that all food, waste paper, paper cups, dishes and other utensils and containers used are properly disposed of and the area left in a neat and orderly condition for the next user.

(b) Shelter houses are not to be used as carports, for parking or for camping of any kind whatsoever, nor shall campers use electrical outlets at shelter houses for camping equipment, appliances or similar uses.

(Code 1996, § 12-309; Ord. No. 3660, § 10)

Sec. 30-111. - Swimming.

(a) Swimming will be permitted in the swimming beach area of the waters of Wellington Lake located in the southwest corner of the lake and marked by buoys or floating pipe establishing the limits of the swimming area; when buoys or floating pipe are not in place no swimming will be permitted; swimming may be restricted when, in the opinion of the Lake Supervisor, the waters of the lake are, for any reason, unsafe for swimmers. A recreation permit shall be required for swimming and use of the beach area.

(b) No lifeguards will be provided in the swimming area and swimmer will assume all risks of injury which may result from such swimming; children under the age of 12 years must be accompanied by an adult; no glass, alcoholic liquor or cereal malt beverages, or dogs will be permitted in the swimming beach area; the area shall be closed from one-half hour after sunset to one-half hour before sunrise.

(Code 1996, § 12-310; Ord. No. 3660, § 11)

Sec. 30-112. - Archery.

The sport of archery, whether for purposes of practice, or archery competition or otherwise, shall not be permitted in the Wellington Lake Recreation Area without specific written authority from the City. Such authority shall not be granted unless adequate insurance coverage is provided to protect the City as well as others using the recreation area and surrounding territory against personal injury and property damage resulting from shooting bows and arrows, each participant in the sport agrees in writing to abide by and comply with all rules, regulations and requirements set forth in this article and in the written document granting such authority, and unless the City Park Board recommends that such authority be granted.

(Code 1996, § 12-311; Ord. No. 3660, § 12)

Sec. 30-113. - Commercial activities.

Commercial activities may be carried on in the Wellington Lake Recreation Area only by persons who have by written agreement with the City obtained approval to carry on such activity. This shall include guide services for hunting, fishing and other services in which a monetary transaction has been made for such service.

(Code 1996, § 12-312; Ord. No. 3660, § 13)

Sec. 30-114. - Special events.

The Governing Body of the City may at any time permit special events at the Wellington Lake Recreation Area by large groups or by the community as a whole and to close such parts of the recreation area for such period of time as deemed necessary to accommodate such special event. A special event, for purposes of this section, shall be deemed to be an event which occurs or is held not more frequently than once a year and which extends for no longer than two consecutive days and in which an unusually large number of persons would participate.

(Code 1996, § 12-313; Ord. No. 3660, § 14)

Sec. 30-115. - Rights reserved by the City.

Because the waters of Wellington Lake serve as the water supply for residents of the City and its environs as well as for several rural water districts, the City shall have the right, notwithstanding any language herein that may be construed to the contrary, at any time to change, amend, repeal or suspend for any period of time recreational privileges granted by this article in order to protect such water supply for human consumption, and such action by the City may be taken without

notice and without any requirement that permit and license fees collected under the provisions of this article be refunded to the person from whom such fees were collected.

(Code 1996, § 12-314; Ord. No. 3660, § 15)

Sec. 30-116. - Acts prohibited.

It shall be unlawful for any person to do any of the following acts in the Wellington Lake Recreation area:

- (1) To sell, possess or consume alcohol liquor unless the Governing Body agrees to enter into an agreement for the purpose of providing live entertainment on specific dates and times within a designated area to be agreed upon between the contracting parties located within the Wellington Lake Recreation area.
- (2) To drive any vehicles at a speed greater than as posted.
- (3) To drive any vehicle, including dune buggies, at any place except on roadways.
- (4) To park or leave unattended any vehicle on any roadway in such a manner as to block or impede traffic.
- (5) To violate any traffic laws of the state.
- (6) To permit domestic pets to run at large, except that hunting dogs shall be permitted to run at large during hunting seasons if kept under the control of the owner.
- (7) To transport any person on the waters of Wellington Lake for hire or for any valuable consideration without a valid concessionaires written agreement from the City.
- (8) To building, start, or maintain a fire in or about the Wellington Lake Recreation Area except in permanent fireplaces, grills or other facilities provided in the area.
- (9) To move or transport any fire pit, picnic table, bench or other appurtenance placed or set by the Lake Supervisor from one campsite to another.
- (10) To engage in or solicit any business in any manner whatsoever, including the dissemination or posting of handbills and notices without a valid concessionaire's agreement or specific permission granted by resolution of the Governing Body of the City.
- (11) To throw or leave along any roadway or on the ground in any picnic or camping area, any refuse, garbage, rubbish, sewage, gray water or waste of any kind.

- (12) To dispose of any refuse, garbage, rubbish, sewage, gray water or water of any kind whatsoever except in depositaries provided therefore.
- (13) To in any manner pollute the waters of Wellington Lake.
- (14) It shall be unlawful for any unauthorized person to go upon the dam, the emergency spillway, or any part thereof, located at Lake Wellington which is within the city limits except by a person under the person's own muscular power.
- (15) To make a false statement or representation in order to secure a permit, license or agreement provided for therein.
- (16) Only vehicles authorized under city ordinance shall be operated on lake property or roadways. Said vehicles shall be properly registered as required by City Ordinance.
- (17) To set up, construct, grow, or otherwise possess or allow fences, pens, runs, pallets, swimming pools larger than 50 gallons, gardens, or appliances on lake property. Items such as carpets, mats, swimming pools 50 gallons or smaller, clothes lines and outdoor furniture shall be stored away when not in use. All satellite dishes, antenna, digital receivers and similar equipment shall be mounted on a trailer, camper or recreational vehicle and not on or in the ground.
- (18) Campers shall maintain the grass around their respective electric cord, hoses and camper.
- (Code 1996, § 12-315; Ord. No. 3628, § 1; Ord. No. 3660, § 16; Ord. No. 3926, 4-5-2005; Ord. No. 4037, § I, 4-7-2009)

Sec. 30-117. - Enforcing officer.

The City Manager or the City Manager's duly authorized agent shall have the duty to enforce ordinances of the City pertaining to the Wellington Lake Recreation Area.

(Code 1996, § 12-316; Ord. No. 3660, § 17)

Sec. 30-118. - Penalties.

(a) Any person who shall violate any provision of this article, unless otherwise referenced herein, shall, upon conviction thereof, be fined not more than \$500.00, or be imprisoned for not more than 30 days, or be both so fined and imprisoned, and in addition thereto may be ordered by the municipal court to make restitution to the City for damages resulting from such violation.

(b) Any person who shall violate any provision of this article relating to traffic or to alcoholic liquor or cereal malt beverage shall, upon conviction thereof, be punished in the manner provided for in other ordinances of the City relating to such conduct.

(c) In addition to the foregoing penalties any violator of the provisions of this article or the applicable laws of the state may be removed from the Wellington Lake Recreation Area and barred from further use of such recreation area until the violator complies with or demonstrates to the Lake Supervisor that the violator can comply with this article and the laws of the state in the future. Actions of the Lake Supervisor under this subsection may be appealed and heard by the Governing Body of the City.

(e) In addition to the foregoing penalties the boating privileges of any person who habitually operates a boat on the waters of Wellington Lake in a wanton and reckless manner may be forfeited or terminated.

(Code 1996, § 12-318; Ord. No. 3660, § 18)

Secs. 30-119—30-149. - Reserved.

SECTION III

This ordinance shall take effect and be in force from on April 1, 2021, and after its publication in the official city newspaper, as approved by law.

PASSED by the City Council this 16th day of March, 2021.

APPROVED by the Mayor

Jim Valentine, Mayor

(SEAL)
ATTEST:

Heidi Theurer, City Clerk

FORM APPROVED:

Shawn R. DeJarnett, City Attorney



To: **Honorable Mayor & Council**
 Shane Shields, City Manager

From: **Jeremy M. Jones, Director of Public Works**

Date: **March 12, 2021**

Re: **Update of Regulations for Wellington Lake Recreation Area**

With the increased volume of traffic and camping at Wellington Lake the last few years, we are seeing a number of activities that we feel are detrimental to the facility and the overall camping experience for our customers. Over the last 14-16 months we have been drafting an update of Chapter 30, Article III of the Wellington City Code and made two presentations to the Park Board for review. The final product is being presented tonight with a request for adoption.

Proposed changes include updating the alcohol/CMB sections to match recent changes in statute, definitions of different types of vehicles, clarification to a number of sections pertaining to permits and activities, and the addition of several prohibited acts. I would specifically point attention to closing the facility to camping during the month of February for maintenance, and Section 30-116 - Acts prohibited, where there were a number of additions addressing the increased amount of items being used or stored outside the campers. We are seeing more swimming pools, carpets, fencing and appliances that increase utility use, kill patches of grass, and create hazards because they are not property protected when not in use.

The process of opening for camping each year, as discussed at the previous Council meeting, would not typically be included in ordinance form, thus is not part of this ordinance being presented. Staff did discuss with the Park Board recently and will continue to work on a plan for next season.

No changes to fees or permits are being proposed with this amendment.

Staff recommends approval as presented.

RESOLUTION NO. _____

A RESOLUTION ADOPTING AND DECLARING THE OFFICIAL FLAG FOR THE CITY OF WELLINGTON, KANSAS.

WHEREAS, many cities of the United States have adopted official city flags for display at city facilities and at civic functions; and

WHEREAS, the City of Wellington, Kansas desires to adopt an official city flag; and

WHEREAS, the City Manager and Wellington Area Chamber of Commerce/CVB sought public input and established a jury of citizens to narrow the submitted designs and identify a suitable design from entries that follow accepted principles of good flag design; and

WHEREAS, said design will identify, unify and inspire the citizens of Wellington; and

WHEREAS, it would be an honor and distinction to adopt said design for the official flag of the City of Wellington;

NOW THEREFORE, BE IT RESOLVED BY THE GOVERNING BODY OF THE CITY OF WELLINGTON, KANSAS that the flag design submitted by Shayna Templeton, attached hereto, be and it is hereby adopted as the official flag of the City of Wellington, Kansas; and

BE IT FURTHER RESOLVED that use of the City flag by the public to promote and represent the City is hereby authorized.

APPROVED AND ADOPTED at Wellington, Kansas this 16th day of March 2021.

Mayor

(SEAL)

ATTEST:

City Clerk

FORM APPROVED:

City Attorney

RESOLUTION NO. _____

A RESOLUTION AUTHORIZING THE CITY MANAGER TO
EXECUTE AN AGREEMENT WITH ASCENSION VIA CHRISTI HOSPITALS
WICHITA, INC. FOR EMS TRANSPORTATION SERVICES.

WHEREAS, the City agrees to provide Hospital with both emergency and non-emergency ambulance services from the Wellington Campus to either the St. Francis Campus or the St. Joseph Campus on a continuous 24/7/365 basis, subject to agreement terms and conditions,

WHEREAS, the agreement was received from the company and reviewed by the City Manager and City Attorney.

NOW, THEREFORE, BE IT RESOLVED BY THE GOVERNING BODY OF THE CITY OF WELLINGTON, KANSAS that the City Manager is hereby authorized to execute the attached agreement on behalf of the City of Wellington, for EMS transportation services to Ascension Via Christi Hospitals.

APPROVED AND ADOPTED at Wellington, Kansas this 16th day of March, 2021.

(SEAL)

Jim Valentine, Mayor

ATTEST:

Heidi Theurer, City Clerk

FORM APPROVED:

Shawn DeJarnett, City Attorney

MEDICAL TRANSPORTATION SERVICES AGREEMENT

This Agreement is entered into as of March 16, 2021, by and between City of Wellington, Kansas (“City”), and Ascension Via Christi Hospitals Wichita, Inc., a Kansas not-for-profit corporation (“Hospital”).

A. Hospital own and operates campuses (each, a “Campus”) at 929 N. St. Francis, Wichita, Kansas (the “St. Francis Campus”); 3600 E Harry, Wichita, Kansas (the “St. Joseph Campus”); and 1323 N. A Street, Wellington, Kansas (“Wellington Campus”);

B. Hospital operates an emergency department (the “Wellington Emergency Department”) at the Wellington Campus;

C. Hospital desire to obtain healthcare transportation services for the transfer of patients from the Wellington Emergency Department to the St. Francis Campus or the St. Joseph Campus (as applicable); and

D. City furnishes through its Emergency Medical Service Department (“EMS”) healthcare transportation services and desires to provide such services in accordance with the terms and conditions set forth in this Agreement.

The parties agree as follows:

ARTICLE I **EMS’ RESPONSIBILITIES**

1.01 **Transport Services.** City agrees to provide Hospital with both emergency and non-emergency ambulance transport services pursuant to the terms and conditions set forth in this Agreement (“Transport Services” or “Services”). City will furnish the Services by and through EMS. The Transport Services will consist of transports (each, a “Transport”) of patients from the Wellington Campus to either the St. Francis Campus or the St. Joseph Campus. EMS shall be available to provide the Services on a continuous (24/7/365) basis, subject to the terms and conditions set forth in this Agreement.

1.02 **Response Time.**

A. City acknowledges and agrees that the Services include both emergency and non-emergency Transports. EMS will use its best efforts to respond to all Hospital requests for Transport Services as soon as reasonably possible. If at any time EMS receives more requests for transport than EMS has available resources (including personnel and vehicles), EMS will prioritize such requests in accordance with EMS policies. Notwithstanding the foregoing, EMS will respond to Hospital requests for Transport Services in the same manner that EMS would respond to a request from the local dispatcher, and EMS will not discriminate in responding to Hospital’s requests for Transport.

B. Upon receipt of a request from Hospital for Transport Services, EMS will advise Hospital of EMS’ estimate response time, and EMS will remain in communication with Hospital until the request for Transport Services is complete.

C. EMS will use its best efforts to perform the Services in accordance with the following time standards: (i) EMS will arrive at the Wellington Campus within thirty minutes after a request for emergent Transport Services; and (ii) EMS will arrive at the Wellington Campus within sixty minutes after a request for non-emergent Transport Services.

D. EMS shall transport all patients received from Hospital to the designated Campus as reasonably expeditiously as possible.

E. The parties agree to meet upon request to evaluate the timeliness and appropriateness of EMS' response times and Services.

1.03 **Equipment Records.** EMS shall document the receipt of any hospital-owned equipment necessary for the convenient transfer of patients, assume custody for the equipment during the transfer, and return the equipment to the appropriate hospital department as soon as practicable after the Transport.

1.04 **Patient Valuables.** EMS shall document the receipt of patient valuables, assure custody for the valuables upon receipt, and deliver the valuables to a responsible party at receiving Campus.

1.05 **Compliance.** EMS shall perform all Services under this Agreement in accordance with (A) all applicable industry standards, (B) all regulatory and accreditation standards applicable to Hospital, EMS, and the Transport Service, and (C) all applicable law, including all applicable federal, state, and local laws, rules, regulations and policies.

1.06 **Insurance.** City shall maintain on behalf of City, EMS, and all EMS personnel: (A) comprehensive general liability and professional liability in amounts equal to at least \$1,000,000 per occurrence and \$3,000,000 in the aggregate, (B) workers compensation insurance, and (C) automobile insurance.

1.07 **Availability and Documentation.** EMS shall, for a period of six years after this Agreement terminates, make available, upon the written request of the Secretary of Health and Human Services or the Comptroller General, or their representatives, this Agreement, and such books, documents and records as may be necessary to verify the nature and extent of the costs of the services rendered hereunder. Furthermore, the parties agree that if any of the work provided for under this Agreement, with a value of \$10,000 or more in any twelve-month period, shall be performed by a subcontractor, they shall require the subcontractor to sign a similar agreement to make its books and records available for such a six-year time period.

ARTICLE II

HOSPITAL'S RESPONSIBILITIES

2.01 Availability; Back-Up Medical Transportation Provider.

A. Hospital acknowledges and agrees that EMS may be unavailable at times due to high demand, emergencies or other unforeseen circumstances. EMS will advise Hospital of the estimated response time and will notify Hospital when requests for Transport Services cannot be honored. Hospital acknowledges and agrees that EMS is not obligated to provide any back-up

medical transportation services or to pay for any charges of a substitute provider, including any difference between the contracted rates under this Agreement and the charges of the substitute provider.

B. Upon receiving the estimated response time from EMS, Hospital is responsible for determining whether the estimated response time is appropriate for the applicable patient based on the patient's medical condition. If Hospital determines that earlier transport is needed, Hospital is solely responsible for procuring such transport services (at its sole cost and expense). Hospital will advise EMS if the Transport Services requested of EMS are no longer required.

2.02 **Insurance.** Hospital shall maintain, at all applicable times, comprehensive general liability and professional liability in amounts equal to at least \$1,000,000 per occurrence and \$3,000,000 in the aggregate. Hospital shall furnish EMS with satisfactory evidence of such insurance prior to execution of this Agreement.

2.03 **Availability of Records.** Until the expiration of six years after providing services pursuant to this Agreement, Hospital shall retain and make available to the Secretary of Health and Human Services, the Comptroller General, or their duly authorized representatives upon written request, records necessary to verify the nature, extent, and cost of services rendered hereunder. No attorney-client, accountant-client, or other legal privilege will be deemed to have been waived by Hospital by virtue of this Agreement.

ARTICLE III **FEES**

3.01 **Fees Payable to EMS.** As consideration for each Transport from the Wellington Campus to either the St. Francis Campus or St. Joseph Campus under this Agreement, Hospital will pay City an amount equal to (A) \$644.00 per Transport requiring basic life support ("BLS"), and (B) \$695.00 per Transport requiring advanced life support ("ALS"). City will invoice Hospital on a monthly basis for all Transports completed during the prior month, and Hospital will pay City the invoice amount within forty-five days after receipt of the invoice.

3.02 **Payment in Full.** City and EMS shall not bill any patient, financially responsible party, insurer, or third-party payor for any Transport from the Wellington Campus to either the St. Francis Campus or St. Joseph Campus under this Agreement. Hospital is not obligated to reimburse City or EMS for any expenses incurred by either party in connection with this Agreement.

3.03 **Other Transports.** City and EMS are solely responsible for billing and collecting fees for all other transports (i.e., any transport other than a transport from the Wellington Campus to either the St. Francis Campus or the St. Joseph Campus). Hospital is not obligated to pay City or EMS for such transports, and City and EMS bear the sole risk of nonpayment for such services.

ARTICLE IV
TERM AND TERMINATION

4.01 **Term.** This Agreement will begin on the Effective Date and will continue for a period of one year, unless earlier terminated as set forth in this Agreement. After the initial, one-year term, this Agreement will automatically renew for successive one-year periods until terminated as set forth in this Agreement.

4.02 **Immediate Termination.** Either party may immediately terminate this Agreement, without any advance notice of such termination, upon any one of the following occurrences:

A. If either party fails to maintain its required licenses, permits or certifications or is excluded from the Medicare or Medicaid programs.

B. If either party fails to keep in force the insurance policies required to be maintained under this Agreement.

C. Upon either party's general assignment for the benefit of creditors or petition for relief in bankruptcy or under similar laws for the protections of debtors, or upon the initiation of such proceedings against either party if the same are not dismissed within forty-five days of service.

D. If any of the representations of either party as set forth in this Agreement are false or misleading in any material respect.

E. Upon one or more of Hospital loss of certification as a Medicare provider.

4.03 **Termination for Cause.** Either party may terminate this Agreement upon breach by the other party if the breach is not cured within ten days after the non-breaching party delivers written notice of the breach to the breaching party.

4.04 **Termination for Change of Laws.** If any legislation, regulation or government policy is passed or adopted, or if these laws, regulations or policies are interrupted in a manner that would materially affect either party's business or the implementation of this Agreement as written, the party shall provide notice of such law, regulation or policy to the other party and the parties agree to negotiate in good faith within thirty days to modify the terms of this Agreement to comply with the applicable law, regulation or policy. If the parties cannot agree upon the necessary modification, either party may terminate this Agreement on thirty days advance written notice without consequence.

4.05 **Termination Without Cause.** Either party may terminate this Agreement at any time without cause upon ninety days written notice which shall specify the effective date of the termination.

4.06 **Effect of Termination.** The provisions of this Agreement, which by their nature must survive termination to be effective (such as, but without limitation, obligations to pay money and obligations to submit reports) shall be deemed to remain in effect after termination of this Agreement.

ARTICLE V
MISCELLANEOUS PROVISIONS

5.01 **Certifications and Licenses.** Each party shall maintain all certifications and licenses as required by all applicable state and federal laws. Each party will be certified to participate in the Medicare and Medicaid programs upon the effective date of this Agreement.

5.02 **Compliance with Applicable Law Rules and Regulations.** Each party agrees to perform its obligations under this Agreement in full compliance with all Federal, State and local laws, rules, and regulations applicable to the Agreement.

5.03 **Notification of Actual or Potential Violation of Law.** If either party becomes aware of any actual or potential violations by the other party, whether intentional or inadvertent, of any applicable state or federal statutes or regulations, it shall promptly notify the other party.

5.04 **Publicity and Intellectual Property.** Neither party shall use and/or disclose any intellectual property, trademarks, service marks, visual product representations, trade names, logos, or other commercial or product designations of the other, or disclose such without the other party's prior written consent. Neither party shall identify or make reference to the other party in any communication, advertising, or other promotional modality, regardless of its form, without prior written consent from the other party.

5.05 **Indemnification.** To the fullest extent of the law, City shall defend, indemnify and hold harmless Hospital and members, officers, managers, employees, and agents, from any and all claims, suits, actions, proceedings, liabilities, damages, costs or expenses, including attorney fees and court costs, arising, or alleged to have arisen from the negligent, willful, wanton, or reckless acts or omissions of City or EMS, or their officers, employees, subcontractors, agents, or servants. Notwithstanding the foregoing, City and EMS' liability is limited by the Kansas Tort Claims Act (K.S.A. § 75-6101 et seq.).

5.06 **Force Majeure.** Each party will be excused for failures and delays in performance of its respective obligations under this Agreement due to any cause beyond its control and without fault, including, without limitation, any act of God, war, riot or insurrection, law or regulation, strike, flood, fire, terrorism, explosion, or inability due to any of the aforementioned causes to obtain labor, materials, roadways, or facilities. In addition to the above, EMS shall be excused for failures and delays in performance of its obligations under this Agreement due to adverse weather condition, natural physical barriers, such as mountains, hills, or washes, traffic conditions, natural disasters, and/or other limitations of access to the person requiring services. Such conditions may impede, or affect or block EMS's efforts to provide services and/or ability to utilize some or all of its equipment. Nevertheless, each party shall use its best efforts to avoid or remove such causes and to continue performance whenever such causes are removed, and shall notify the other party of the problem.

5.07 **No Requirements for Referrals.** The parties expressly agree that nothing contained in this Agreement shall require either party to refer any patients to, or order any goods or services from the other party. Neither party will knowingly or intentionally conduct itself in a

manner as to violate the prohibition against fraud and abuse in connection with the Medicare and Medicaid programs (42 U.S.C. § 1320a- 7b).

5.08 Protection of Patient Information. The parties, each of which are “covered entities,” shall carry out their obligations under this Agreement in compliance with the privacy and security regulations of the Health Insurance Portability and Accountability Act of 1996 (“HIPAA”), to protect the privacy and security of any personally identifiable, protected health information (“PHI”) that is collected, processed or learned as a result of the services provided pursuant to this Agreement. Both parties acknowledge that their relationship to patients receiving services hereunder is a “direct treatment relationship” as that term is defined in the Privacy Regulations and that this contractual relationship does not constitute a “business associate” agreement pursuant to the Privacy Rule. The parties also understand that it is permissible under HIPAA to freely exchange PHI for purposes of treatment, payment, or healthcare operations, including information to determine medical necessity. Both parties agree to a free exchange of PHI for purposes of treatment, payment, or healthcare operations, and Hospital will provide all documents requested by EMS so that it may properly bill for covered transports.

5.09 Information/Confidentiality. As a governmental entity, the City’s contracts are generally public records. Accordingly, no provision of this Agreement shall restrict City’s ability to produce this Agreement in response to a lawful request or from otherwise complying with the Kansas Open Records Act (K.S.A. 45-215 *et seq.*).

5.10 Relationship of Parties. It is agreed that the legal relationship between EMS and Hospital is of a contractual nature. Both parties assert and believe that EMS is acting as an independent contractor in providing the services and performing the duties required by this Agreement.

5.11 Authority to Contract. Both parties assure that they possess legal authority to contract these services; that resolution, motion or similar action has been duly adopted or passed as an official act of both EMS and Hospital’ governing bodies, authorizing the signing of this Agreement, including all understandings and assurances contained therein, and directing and authorizing the person identified as the official representative of both EMS and Hospital to act in connection with the application and to provide such additional information as may be required.

5.12 Ownership of Information. Except as otherwise specifically agreed, EMS agrees that it acquires no title or right to information disclosed by Hospital to EMS under this Agreement.

5.13 Regulatory Changes. The parties recognize that this Agreement is at all times subject to applicable state, local, and federal laws and shall be construed accordingly. The parties further recognize that this Agreement may become subject to or be affected by amendments in such laws and regulations or to new legislation or regulations. Any provisions of law that invalidate, or are otherwise inconsistent with, the material terms and conditions of this Agreement, or that would cause one or both of the parties hereto to be in violation of law, shall be deemed to have superseded the terms of this Agreement and, in such event, the parties agree to utilize their best efforts to modify the terms and conditions of this Agreement to be consistent with the requirements of such law(s) in order to effectuate the purposes and intent of this Agreement. In the event that any such laws or regulations affecting this Agreement are enacted, amended or

promulgated, either party may propose to the other a written amendment to this Agreement to be consistent with the provisions of such laws or regulations. In the event that the parties do not agree on such written amendments within thirty (30) days of receipt of the proposed written amendments, then either party may terminate this Agreement without further notice, without consequence, unless this Agreement would expire earlier by its terms.

5.14 **Corporate Responsibility, Debarment and/or Exclusion.** The Hospital has a Corporate Responsibility Program (“CRP”) which has as its goal to ensure that the Hospital complies with federal, state and local laws and regulations. The CRP focuses on risk management, corporate responsibility and compliance, the promotion of good corporate citizenship, including the commitment to uphold a high standard of ethical and legal business practices, and the prevention of misconduct. The commitment to the CRP is acknowledged and it is agreed that all services and business transactions which occur pursuant to this Agreement will be in accordance with the underlying philosophy of the CRP. Reasonable efforts will be utilized to ensure all personnel comply and cooperate with, and participate in, the general directives and intent of the CRP as applicable to the performance of the services and business transactions under this Agreement. Further, City and EMS shall disclose immediately any proposed or actual debarment, exclusion or other event that makes City or EMS, or any EMS personnel, as applicable, ineligible to participate in state or federal healthcare programs or state or federal procurement or non-procurement programs.

5.15 **Non-Discrimination.** All services provided under this Agreement shall be provided without regard to the race, color, creed, sex, age, disability status, payor source or national origin of the resident requiring such services. EMS agrees to comply with all applicable laws prohibiting discrimination in the provision of services hereunder.

5.16 **Governing Law.** This Agreement shall be interpreted under and governed by the laws of the State of Kansas. The parties agree that any dispute or cause of action that arises in connection with this Agreement will be brought before a court of competent jurisdiction in Sedgwick City, Kansas.

5.17 **Binding Effect.** This Agreement shall be binding upon and shall inure to the benefit of the parties hereto, their respective successors, assigns or other legal representatives.

5.18 **Assignment.** Neither this Agreement nor any rights or obligations created by it shall be assigned or otherwise transferred by either party without the prior written consent of the other. Any attempted assignment without such consent shall be null and void.

5.19 **Severability.** In the event that any provision of this Agreement is held to be unenforceable, the remaining provisions shall continue in full force and effect.

5.20 **Notification.** Notifications required pursuant to this Agreement shall be made in writing and mailed to the addresses shown below. Such notification shall be deemed complete upon mailing.

If to City: City of Wellington, Kansas
Attn: City Manager
317 S. Washington Ave
Wellington, Kansas 67152

If to Hospitals: Ascension Via Christi Hospitals Wichita, Inc.
929 N St. Francis
Wichita, Kansas 67214
Attn: President

With a copy to: Ascension Health, Inc.
8200 East Thorn Drive
Wichita, KS 67226
Attn: Regional Associate General Counsel

5.21 **Waiver and Consent.** The failure of either party at any time to require performance by the other party of any provision hereof shall not affect in any way the rights to require such performance of any other provision hereof, nor shall the waiver by either party of a breach of any provision hereof be taken or held to be a waiver of the provision itself. If the consent of either party is necessary pursuant to the terms of this Agreement, such consent shall not be unreasonably withheld.

5.22 **Entire Agreement.** This Agreement and the documents incorporated herein contain all the terms and conditions agreed upon by both parties. No other understandings, oral or otherwise, regarding the subject matter of this Agreement shall be deemed to exist or to bind any of the parties hereto. Any agreement not contained herein shall not be binding on either party, nor shall it be of any force or effect.

5.23 **Amendments.** Neither this Agreement nor any rights or obligations created by it shall be amended by either party without the prior written consent of the other. Any attempted amendment without such consent shall be null and void.

The parties have executed this Agreement as of the Effective Date.

CITY OF WELLINGTON, KANSAS

**ASCENSION VIA CHRISTI
HOSPITALS WICHITA, INC.**

By: _____
Name: _____
Its: _____

By: _____
Name: _____
Its: _____

“City”

“Hospital”



Memorandum

To: Shane Shields, City Manager

From: Tim Hay, Fire/EMS Chief

Date: March 16, 2021

Re: Ascension EMS Transport Contract

After reviewing 2019 transports from SRMC to Wichita and revenue from those transports there will be more revenue by contracting with Ascension at a flat rate. In addition, we will not have to pay the billing company percentage. The rate, offered by Ascension is align with Medicare rates we now receive. The revenue from transports from SRMC to Wichita in 2019 reflected that most patients either had Medicaid or Medicare and private insurance rarely paid the full amount. There are still many patients who have no private insurance, Medicaid or Medicare. This contract only pertains to transports from Ascension ED to an Ascension hospital. I recommend that we enter into a contract with Ascension and review annually for any changes in the contract.

RESOLUTION NO. _____

A RESOLUTION AUTHORIZING THE CITY MANAGER TO EXECUTE A PROFESSIONAL SERVICES AGREEMENT WITH RANSON FINANCIAL GROUP, LLC OF WICHITA, KANSAS, TO PROVIDE DOOR-TO-DOOR SURVEY SERVICES FOR A FEE NOT TO EXCEED \$12,500 AS WELL AS CDBG GRANT PREPARATION AND KDHE STATE REVOLVING FUND (SRF) LOAN APPLICATION/ADMINISTRATION SERVICES TO THE CITY OF WELLINGTON, KANSAS IN AN AMOUNT NOT TO EXCEED \$7,500.

WHEREAS, the City Manager and the City Clerk have ascertained that funds are available for this purpose; and,

WHEREAS, the single source proposal/agreement was received from the company and reviewed by the City Manager and City Attorney.

NOW, THEREFORE, BE IT RESOLVED BY THE GOVERNING BODY OF THE CITY OF WELLINGTON, KANSAS that an award in the amount not to exceed \$12,500 for door-to-door survey services and \$7,500 for CDBG grant preparation and SRF loan application services be made, and the City Manager is hereby authorized to execute the agreement on behalf of the City of Wellington, Kansas, with Ranson Financial Group, LLC.

ADOPTED BY THE GOVERNING BODY OF THE CITY OF WELLINGTON, KANSAS, this 16th day of March 2021.

APPROVED by the Mayor.

Jim Valentine, Mayor

(SEAL)

ATTEST:

Heidi Theurer, City Clerk

FORM APPROVED:

Shawn DeJarnett, City Attorney

March 2021

PLEASE READ, FILL OUT AND SEND/MAIL BACK

The City of Wellington, who provides you with your water service, is considering applying to the Kansas Department of Commerce for a Community Development Block Grant. This grant, if awarded, will be used in conjunction with city funds to construct water system improvements. These improvements may consist of a replacement of existing water lines and appurtenances. It is necessary that the City conduct an income survey to determine our qualifications for the grant funds.

Information you provide will be held in **strict confidence**; no names are to be entered on the income survey. This survey is being conducted for us by Ranson Financial Group L.L.C. and they will also tabulate the surveys. If there is no resident at this address, please write VACANT on the survey and return it without additional comment. *If this is a rental property, please have the tenant complete the survey and return it.*

The reference to "income" is your adjusted gross income as defined for the purpose of reporting under IRS Form 1040. **We are asking that you complete the survey with blue ink if possible.** Please drop the survey form back in the utility box at city hall as soon as you can. Only final numbers will be presented to the council.

Please call Rose Mary Saunders with Ranson Financial Group, L.L.C. at 316-264-3400 if you have any questions about the survey or have questions on how to complete it.

Please return your survey by April 9, 2021 so our grant writer can tabulate the received forms. If you do not return your survey, they or we will be contacting you in person for a response.

Thank you for your assistance on completing this survey. This project will enhance the quality of life for our community.

Your Mayor and City Council
City of Wellington, Kansas

2020 LMI Sample Survey – Kansas Small Cities CDBG Program

The City/County of Wellington Kansas is conducting a survey to determine the need for improvements in public facilities and services. Some of the improvement projects may be eligible for Federal funding. Your answers will be kept confidential and a public hearing will be held regarding potential improvement projects prior to any grant applications being submitted.

- (1) Name and address or Number Identification Code: _____
- (2) How many persons live at this address? _____
- (3) How many persons are unrelated individuals (not members of a family)? _____
- (4) How many families (persons related by birth, marriage, or adoption) live at this address? _____

How many persons are in each family? Family 1 _____ Family 2 _____ Family 3 _____

NOTE: If more than one family or unrelated individual lives at this address, please check the appropriate line for each family or unrelated individual.

FOR EACH FAMILY INDICATED ABOVE, PLEASE CHECK WHETHER YOUR TOTAL FAMILY INCOME IS ABOVE, BETWEEN OR BELOW THE INCOME FIGURES PROVIDED FOR YOUR FAMILY SIZE							
	Income Limits			FAMILY #1		FAMILY #2	
	A (30%)	TO	B (50%)	TO	C (80%)	FAMILY SIZE: _____	FAMILY SIZE: _____
1	15,100	TO	25,200	TO	40,250	<input type="checkbox"/> Income below Column A	<input type="checkbox"/> Income below Column A
2	17,250	TO	28,800	TO	46,000	<input type="checkbox"/> Income between Column A & B	<input type="checkbox"/> Income between Column A & B
3	21,720	TO	32,400	TO	51,750	<input type="checkbox"/> Income between Column B & C	<input type="checkbox"/> Income between Column B & C
4	26,200	TO	35,950	TO	57,500	<input type="checkbox"/> Income above Column C	<input type="checkbox"/> Income above Column C
5	30,680	TO	38,850	TO	62,100		
6	35,160	TO	41,750	TO	66,700		
7	39,640	TO	44,600	TO	71,300		
8	44,120	TO	47,500	TO	75,900		

Race	Total Number Person(s)	Number Hispanic Origin
White		
Black/African American		
Asian		
American Indian/Alaskan Native		
Native Hawaiian/Other Pacific Islander		
American Indian/Alaskan Native & White		
Asian & White		
Black/African American & White		
American Indian/Alaskan Native & Black/African American		
Balance/other		

Female Head of Household

Yes

No

How many? _____

Disabled ¹

Yes

No

How many? _____

¹A disabled person is defined as a person who has a physical or mental impairment which substantially limits one or more of such person's major life activities, has a record of such an impairment or is regarded as having such an impairment.



Memorandum

To: Honorable Mayor and Council
From: Shane J. Shields, City Manager
Date: March 12, 2021
Re: Proposed Water Project – CDBG and KDHE SRF Loan Applications

As council is aware, the possibility of a Community Development Block Grant (CDBG) for the future Plum Street Waterline project has been discussed. Staff has been working with Rose Mary Saunders, of Ranson Financial Group, LLC, to initiate the application process. The Kansas Department of Commerce has confirmed that a city-wide LMI survey is necessary. The option for also a KDHE SRF Loan as also been discussed.

A proposal for Ranson to provide survey services as well as CDBG grant writing and KDHE SRF Loan application/administration services is submitted. The cost for the survey is a not to exceed amount of \$12,500. The KDHE Loan application and CDBG grant preparation work is a not to exceed amount of \$7,500.

The proposed project has been expanded to not only include Plum Street from 8th Street to 16th street, but also the following: Circle Drive, from 8th Street to High Drive. High Drive, from Circle Drive to Edgewood. Edgewood, from High Drive to 16th Street. College Street, from High Drive to Plum Street.

Staff recommends approving the proposal for services.

RESOLUTION NO. _____

A RESOLUTION DECLARING CERTAIN BLOCKS IN PRAIRIE LAWN
CEMETERY IN THE CITY OF WELLINGTON, KANSAS OPEN FOR
SALE TO AND USE BY THE PUBLIC

SECTION I.

That effective on Monday, May 3, 2021, the following Blocks of cemetery lots in Prairie
Lawn Cemetery in Wellington, Kansas, to wit:

Blocks 1276 to 1283, inclusive
Blocks 1306 to 1309, inclusive
Blocks 1310 to 1313, Lots 1-8 respectively

Shall be opened for use and made available for sale to the public at prices presently
established for said lots in said cemetery.

APPROVED AND ADOPTED at Wellington, Kansas this 16th day of March 2021.

Jim Valentine, Mayor

(SEAL)

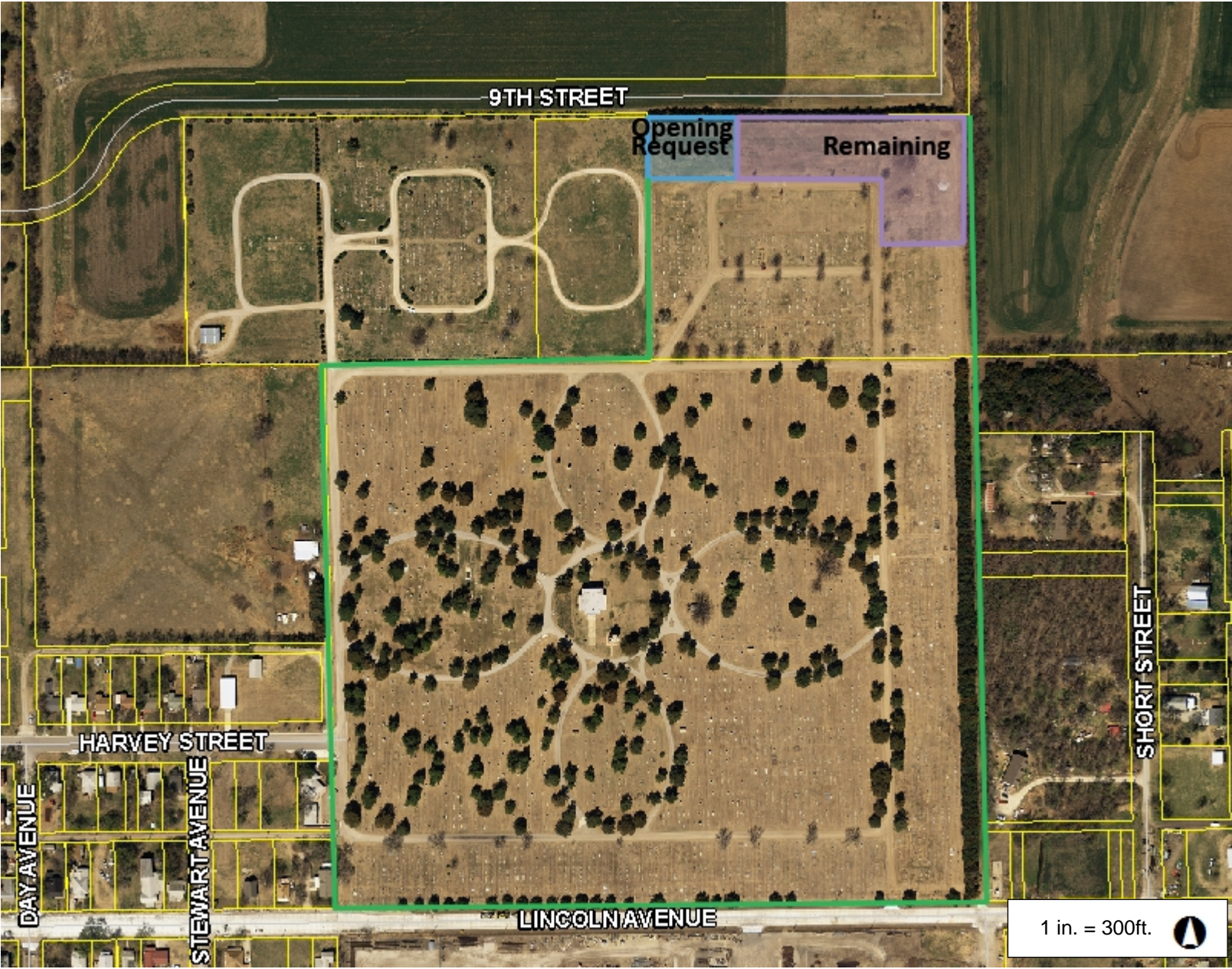
ATTEST:

Heidi Theurer, City Clerk

FORM APPROVED:

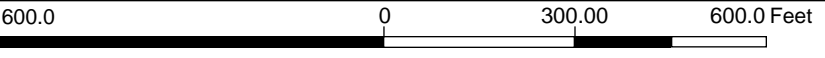
Shawn DeJarnett, City Attorney


Wellington, KS



Legend

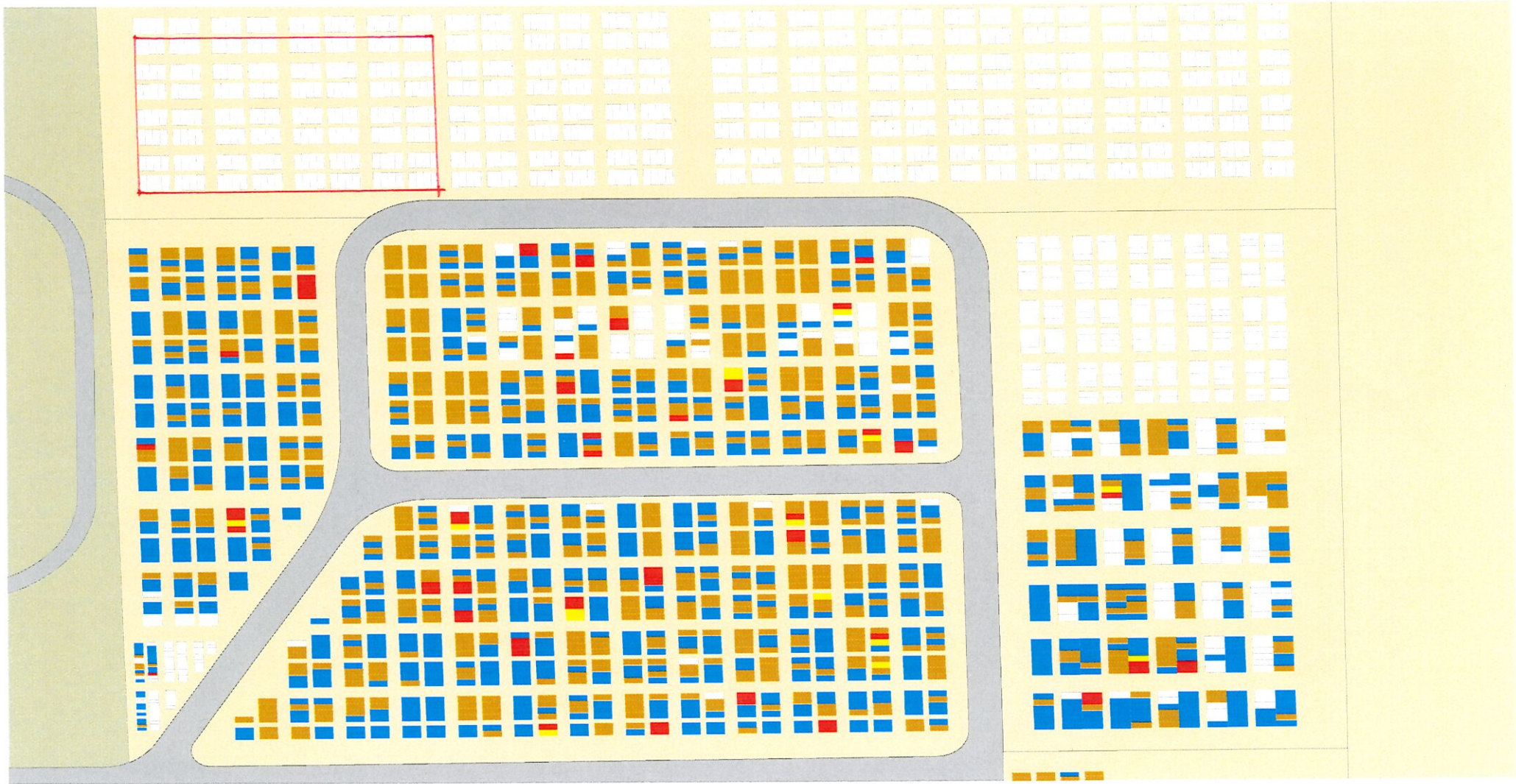
- City Road
- Parcel
- Wellington Photography 2014
- Red: Band_1
- Green: Band_2
- Blue: Band_3



1 in. = 300ft. 

This map is a user generated static output from an Internet mapping site and is for reference only. Data layers that appear on this map may or may not be accurate, current, or otherwise reliable.
 THIS MAP IS NOT TO BE USED FOR NAVIGATION

Notes



WHITE - NOT SOLD

Opening Request

1310	1311	1312	1313	1314	1315	1316	1317	1318	1319	1320	1321	1322	1323	1324
1309	1308	1307	1306	1305	1304	1303	1302	1301	1300	1299	1298	1297	1296	1295
1280	1281	1282	1283	1284	1285	1286	1287	1288	1289	1290	1291	1292	1293	1294
1279	1278	1277	1276	1275	1274	1273	1272	1271	1270	1269	1268	1267	1266	1265

1226	1225	1224	1223	1222	1221	1220	1219	1218	1217	1216	1215	1214	1213	1260	1261	1262	1263	1264	
1187	1188	1189	1190	1191	1192	1193	1194	1195	1196	1197	1198	1199	1200	1259	1258	1257	1256	1255	
1181	1180	1179	1178	1177	1176	1175	1174	1173	1172	1171	1170	1169	1168	1250	1251	1252	1253	1254	
1142	1143	1144	1145	1146	1147	1148	1149	1150	1151	1152	1153	1154	1155	1166	1165	1164	1163	1162	
1137	1136	1135	1134	1133	1132	1131	1130	1129	1128	1127	1126	1125	1124	1123	1157	1158	1159	1160	1161
1096	1097	1098	1099	1100	1101	1102	1103	1104	1105	1106	1107	1108	1109	1110	1121	1120	1119	1118	1117
1090	1089	1088	1087	1086	1085	1084	1083	1082	1081	1080	1079	1078	1077	1112	1113	1114	1115	1116	
1053	1054	1055	1056	1057	1058	1059	1060	1061	1062	1063	1064	1065	1076	1075	1074	1073	1072	1071	

0014	0015	0016	0017	0179	0180	0181	0182	0183	0184	0185	0186	0187	0188	0189	0190	0191	0192	0192A	0192B	0711	0713	1024	1011	1010
------	------	------	------	------	------	------	------	------	------	------	------	------	------	------	------	------	------	-------	-------	------	------	------	------	------

P r
L
C e n
S u m



To: **Honorable Mayor & Council
Shane Shields, City Manager**

From: **Jeremy M. Jones, Director of Public Works
James Hearlson, Cemetery Sexton**

Date: **March 11, 2021**

Re: **Opening a portion of Section 16, Prairie Lawn Cemetery**

This resolution provides for the opening of Blocks 1276-1283, 1306-1309, and lots 1-8 in Blocks 1310-1313 in the western part of Section 16 for sale to the public in Prairie Lawn Cemetery. These blocks contain 224 lots. Currently Prairie Lawn Cemetery has 132 lots available for sale, located in Sections 12 (99), 13 (1), 14 (32). There has been an increasing number of requests for purchases of groups of 4 or more lots together, of which we only have 18. Section 12 contains 13 of those groupings, all of which are located in height restricted rows where upright monuments are not allowed due to the high-density design of said section. 90 lots available are located in 6" rows. By opening up this new section, we are able to offer lots that are more desirable to our customers.

Prairie Lawn Cemetery has averaged 55 lots sold per year over the last 38 years since sections in the north end began opening. We anticipate this number to increase with the opening of the new section and estimate the majority of the lots made available to be sold within 3-4 years.

The most recent opening of lots occurred in 2010 with over 300 lots in the north half of Section 14. The majority of those lots are sold.

The maps provided show an overall view of Prairie Lawn, a closer view of the lots requested to be opened and a color-coded map of sold and unsold lots.

Staff request the lot sales to begin May 3, 2021 to allow time to finish pinning the block corners.

Staff recommends approval of the resolution as presented.