

COUNCIL AGENDA

February 4, 2025 ★ 6:30 p.m.



317 South Washington ★ Wellington, Kansas 67152

I. CALL TO ORDER

II. PLEDGE OF ALLEGIANCE

III. INVOCATION

Reverend Gerald Demarest, 1st Christian Church

IV. ROLL CALL

V. AUDIENCE PARTICIPATION

- 1) American Legion Roof Issues; David Carroll

VI. CONSENT AGENDA

A. APPROVAL OF MINUTES

- 1) Regular Session of January 21, 2025

B. APPROVAL OF APPROPRIATIONS

- 1) Payroll Report for January 12, 2025 to January 25, 2025
- 2) Claims Register for January 18, 2025 to January 31, 2025

C. RECEIPT OF COUNCIL CORRESPONDENCE

- 1) Library Annual 2024 Report
- 2) Retailer Sales Tax & Compensating Use Tax for December 2024
- 3) Ambulance Monthly Financial Report for December 2024
- 4) FIRE/EMS Activities/Overtime/Revenue Report for December 2024
- 5) WRC Board Meeting Minutes for December 17, 2024
- 6) Treasurer's Quarterly Financial Statement Oct 1-Dec 31

VII. REPORTS OF MAYOR AND COUNCIL

VIII. REPORTS OF CITY OFFICIALS

- 1) Board/Commission Appointments for 2025 Annual Process- City Clerk Heidi Theurer

IX. PUBLIC HEARING

X. ORDINANCES

XI. RESOLUTIONS

- 1) A RESOLUTION AUTHORIZING CERTAIN IMPROVEMENTS TO A SWIMMING POOL IN THE CITY OF WELLINGTON, KANSAS; AND AUTHORIZING THE ISSUANCE OF GENERAL OBLIGATION BONDS OF THE CITY TO PAY SUCH COSTS.
- 2) A RESOLUTION AUTHORIZING THE OFFERING FOR SALE OF GENERAL OBLIGATION BONDS, SERIES 2025, OF THE CITY OF WELLINGTON, KANSAS.
- 3) A RESOLUTION FINDING THAT THE STRUCTURE LOCATED ON BLOCK 93, LOT(S) 7, S10' OF 6 & N20' 8, ORIGINAL TOWN, CITY OF WELLINGTON, SUMNER COUNTY, KANSAS. COMMONLY KNOWN AS 514 SOUTH F STREET IS UNSAFE OR DANGEROUS AND DIRECTING THE STRUCTURE TO BE MADE SAFE AND SECURE OR REMOVED
- 4) A RESOLUTION OF THE CITY OF WELLINGTON, KANSAS, DETERMINING THE ADVISABILITY OF ESTABLISHING A QUALIFIED LOW-INCOME ECONOMIC BENEFIT PROGRAM FOR THE SOLAR FACILITY.
- 5) A RESOLUTION OF THE CITY OF WELLINGTON, KANSAS, CONFIRMING NO INTERCONNECTION AGREEMENT IS REQUIRED FOR THE SOLAR FACILITY.

XII. STUDY ITEMS

XIII. EXECUTIVE SESSION

FUTURE AGENDA ITEMS

2/11 Work Session-Park Plan/KPP EV Charging Infrastructure

ADJOURN

The Council of the City of Wellington, Kansas, met in Regular Session on January 21, 2025 at 6:30 p.m., in the City Council Room, City Administration Center, with Mayor Joe Soria presiding.

The Pledge of Allegiance was led by Mayor Joe Soria.

The Invocation was given by Rev. Bob Nusser, First Baptist Church.

Council members Cindy Antonich, Kevin Dodds, Janet Grace, Mary Lucas, Rick Roitman, Mike Westmoreland and Mayor Soria were all present at roll call.

Members of the Staff present were City Manager Jeff Porter, City Clerk Heidi Theurer, City Attorney Shawn DeJarnett, Police Chief Tracy Heath, Public Works Director Jeremy Jones, Airport Manager Matt Wiebe, Assistant City Manager of Utilities/IT Jason Newberry, and IT/GIS Technician Peyton Tuttle.

AUDIENCE PARTICIPATION

Cowley College/Sumner Campus Update-Zach Cooper, Director of Sumner Campus. Mr. Zach Cooper reported that today was the first day of spring classes; he does not have official enrollment numbers yet. The Golden Tigers enrollment begins soon for those 50 and older. The EMS/Paramedic area is nearly complete; the College is waiting on the ambulance box and the cadaver lab table. An open house will be scheduled once it is completed. There was some discussion about the ownership of items being moved from the Sumner Campus to the Arkansas City Campus. Mr. Cooper committed to due diligence and will report back. Council member Antonich inquired about the greenhouse being set up in Arkansas City. Mr. Cooper responded that it was being set up there first but would be moved to Wellington.

Sumner County Economic Development Update –Stacy Davis, Director. Ms. Stacy Davis reported last week was the official announcement for AAR’s expansion project, which will bring 100 jobs to Wellington. SCEDC was selected as one of 11 recipients for the K-State 105 Project which includes installing a commercial kitchen in Caldwell. The kitchen will provide the Border Queen Harvest Hub, and other partners, with 24/7 kitchen access when producing agricultural products. SCEDC partnered with the Chamber for the Morning Pulse on the first Wednesday of each month. This will offer training for businesses based upon a survey that was distributed at the first meeting as well as to the Chamber membership. Ms. Davis asked if she could change from reporting to Council once a month, to once a quarter because she does not always have a lot to report. Council consensus was to move it to quarterly, but requested she submit her agenda and documentation ahead of time to be included in the packet.

Humane Society-Jodie Hearlson, Director of Humane Society. Ms. Jodie Hearlson reported they recently celebrated their 5th Anniversary at the new location in September. She reported the numbers of total animals received and animals adopted. She explained they do not rely upon any County or City funding, and operate solely upon donations and grants. They operate with a small staff and small group of volunteers. She provided information on the services they provide such as spaying and neutering, dog boarding, and microchipping. She encouraged anyone to come out for a tour.

CONSENT AGENDA

Council member Antonich moved to approve the Consent agenda and Council member Westmoreland seconded the motion. The motion carried. The following items were approved under the Consent Agenda.

➤ **APPROVAL OF MINUTES**

1) Regular Session of January 7, 2025

➤ **APPROVAL OF APPROPRIATIONS**

1) Payroll Report for December 29, 2024 to January 11, 2025 in the amount of \$302,836.97

2) Claims Register for January 1 – 17, 2025 in the amount of \$946,171.87

➤ **RECEIPT OF COUNCIL CORRESPONDENCE**

- 1) Clerk's Report for December 2024
- 2) Electric Waterworks Sewage Utility Operating Report for December 2024
- 3) Media Release: City Compost Site Closed for Winter Season
- 4) Land Bank-Annual Report
- 5) Healthcare Authority Board Meeting Minutes for November 21, 2024
- 6) South Central Solid Waste Authority Special Board Meeting Minutes for December 19, 2024
- 7) Park Board Meeting Minutes for December 9, 2024
- 8) Audit Engagement Letter; Gordon CPA

REPORTS OF MAYOR AND COUNCIL

Council member Westmoreland noticed an open hydrant in his neighborhood. Assistant City Manager of Utilities/IT Newberry responded that Water Distribution had a main water break in that area and was trying to clear out the line. Public Works Director Jones stated they need to wait until the water stops flowing to apply treatment to the street.

Council member Roitman stated that the Kansas Power Pool (KPP) offered a reimbursement program to install EV charging stations in the community. The Downtown Park Plan had approved a charging station by the old boot shop; he suggests the City submit the grant application for 2 stations. Assistant City Manager of Utilities/IT Newberry stated that these were really not grants and KPP has no formal paperwork in place. He stated the need to determine a location and discuss metering the electricity. Mr. Newberry reported that KPP has installed these in some communities and then removed them due to unexpected problems. Council requested to meet with KPP on either February 11th or March 11th in a possible work session. Mr. Newberry will reach out to them to arrange a meeting.

Council member Grace reminded citizens that private parking lots and private driveways were to be cleared by property owners. She thanked the employees for their work during the most recent weather.

Council member Antonich explained the Retired Seniors Volunteer Program (RSVP) group and the contact person Debbie Lutz. She thanked the first responders, both fire and police, during the recent winter storm.

RESOLUTION

A RESOLUTION APPROVING AND ACCEPTING BIDS AND AUTHORIZING THE CITY MANAGER TO EXECUTE A PURCHASE ORDER WITH FIRST WIRELESS OF WICHITA, KANSAS FOR A PORTABLE AND MOBILE RADIO EQUIPMENT IN THE AMOUNT OF \$141,482.00 FOR THE POLICE DEPARTMENT was introduced and discussed. Police Chief Heath explained this has been a project for the past 10 years. His department would be utilizing awarded grant funds which exceed the cost of the radios. This purchase would allow Police personnel to communicate using a shared 800 MHz radio system. Council member Lucas made a motion to approve the resolution as presented and Council member Westmoreland seconded. Upon roll call vote, those voting "AYE" were Council members Roitman, Westmoreland, Antonich, Dodds, Grace, and Lucas. There were no "NAY" votes. Number 6354 was assigned to this Resolution.

A RESOLUTION ACCEPTING AND APPROVING THE 2025 ANNUAL CHEMICAL BIDS FOR THE WATER TREATMENT PLANT AS SUBMITTED AND RECOMMENDED was introduced and discussed. Assistant City Manager of Utilities/IT Newberry explained this is an annual request to purchase chemicals for water production. The bids were sent out to 8 or 9 vendors. He asked Council to keep in mind that Staff estimates the chemicals that will be used so amounts may not be exact. The bid exceeds the 2025 budgeted amount; chemicals are necessary to treat water to state and federal standards. Council member Antonich made a motion to approve the resolution as presented and Council member Dodds seconded. Upon roll call vote, those voting "AYE" were Council members Dodds, Grace, Lucas,

Roitman, Westmoreland, and Antonich. There were no “NAY” votes. Number 6355 was assigned to this Resolution.

A RESOLUTION AUTHORIZING THE CITY MANAGER TO EXECUTE A PURCHASE ORDER WITH DONDLINGER & SONS OF WICHITA, KANSAS FOR THE WELLINGTON OUTDOOR POOL IMPROVEMENTS IN AN AMOUNT NOT TO EXCEED \$1,529,800.00 was introduced and discussed. Public Works Director Jones explained that only 2 bids were received for this project. Dondlinger’s bid came in within the engineer ‘estimate. The bid included a splash pad option in the amount of \$330,000. He described each of the repairs included in the bid. If the splash pad option is rejected, then the baby pool will be removed and replaced with concrete decking. . Mr. Porter stated he would meet with our financial advisor and Bond Council on how to finance the improvements. Construction could start as early as February with completion in time for the typical May opening. Council member Lucas asked about removing or replacing existing water features. Mr. Jones responded that the zero entry island would be moved to the side, but most other items would be similar to existing. The splash pad would simply involve spray heads in the concrete and would be on a separate system from the pool. Council member Grace expressed that the overall amount including the splash pad was lower than expected. Mayor Soria interjected that now is the time to convert the baby pool to a splash pad. If not done now, it will likely be double the cost later. Council member Grace made a motion to approve the resolution as presented and Council member Roitman seconded. Upon roll call vote, those voting “AYE” were Council members Lucas, Roitman, Westmoreland, Antonich, Dodds, and Grace. There were no “NAY” votes. Number 6356 was assigned to this Resolution.

A RESOLUTION PROVIDING FOR THE CHARGE-OFF OF UNCOLLECTED UTILITY ACCOUNTS was introduced and discussed. City Clerk Theurer explained this is the charge-offs from the uncollected utility accounts for 2023 plus the Hospital’s old accounts. She explained that without the hospital amounts, the uncollected utility account amounts were within the normal expected range. Council member Roitman made a motion to approve the resolution as presented and Council member Westmoreland seconded. Upon roll call vote, those voting “AYE” were Council members Westmoreland, Antonich, Dodds, Grace, Lucas, and Roitman. There were no “NAY” votes. Number 6357 was assigned to this Resolution.

ADJOURN

A motion was made to adjourn and was seconded. The motion carried.

Approved and filed this day February 4, 2025.

Mayor

City Clerk

PAYROLL REPORT
JANUARY 12, 2025 THRU JANUARY 25, 2025
January 31, 2025

					YR-TO-DATE	YR-TO-DATE
			GROSS	OVERTIME	GROSS	OVERTIME
MAYOR/COUNCIL	001-901	DEPT. TOTAL	\$ -	\$ -	\$ 800.00	\$ -
MANAGER'S OFFICE	001-902	DEPT. TOTAL	\$ 8,343.26	\$ -	\$ 25,780.44	\$ -
CLERK'S OFFICE	001-903	DEPT. TOTAL	\$ 8,525.30	\$ 30.09	\$ 25,089.70	\$ 30.09
UTILITY OFFICE	001-904	DEPT. TOTAL	\$ 8,083.61	\$ 54.81	\$ 24,162.43	\$ 54.81
CUSTODIAL	001-909	DEPT. TOTAL	\$ 1,339.20	\$ -	\$ 4,055.27	\$ 37.67
IT/GIS	001-910	DEPT. TOTAL	\$ 3,683.20	\$ -	\$ 11,109.60	\$ -
POLICE	001-911	DEPT. TOTAL	\$ 45,511.85	\$ 1,186.75	\$ 154,275.39	\$ 1,673.54
FIRE	001-912	DEPT. TOTAL	\$ 57,505.64	\$ 7,007.53	\$ 185,786.26	\$ 25,579.93
FACILITIES	001-914	DEPT. TOTAL	\$ 2,613.67	\$ 94.47	\$ 8,036.33	\$ 448.73
PARKS	001-915	DEPT. TOTAL	\$ 6,264.11	\$ -	\$ 16,041.74	\$ -
STREET	001-918	DEPT. TOTAL	\$ 21,665.65	\$ 660.06	\$ 66,368.42	\$ 3,988.75
CEMETERY	001-919	DEPT. TOTAL	\$ 4,071.51	\$ 221.91	\$ 12,078.90	\$ 450.07
BUILDING AND CODES	001-920	DEPT. TOTAL	\$ 4,208.00	\$ -	\$ 12,850.48	\$ 166.48
LEGAL / COUNSEL	001-921	DEPT. TOTAL	\$ 4,802.30	\$ 8.86	\$ 14,051.51	\$ 8.86
LAKE	001-923	DEPT. TOTAL	\$ 5,575.20	\$ -	\$ 16,805.49	\$ 19.88
GOLF COURSE	402-916	DEPT. TOTAL	\$ 7,728.27	\$ -	\$ 23,615.54	\$ 61.74
ELECTRIC PRODUCTION	415-930	DEPT. TOTAL	\$ 20,557.10	\$ 3,125.57	\$ 61,639.70	\$ 9,450.56
ELECTRIC DISTRIBUTION	415-931	DEPT. TOTAL	\$ 18,098.20	\$ 751.80	\$ 58,739.19	\$ 6,229.99
WATER PRODUCTION	415-932	DEPT. TOTAL	\$ 11,857.68	\$ 1,121.14	\$ 33,560.06	\$ 3,620.48
WATER DISTRIBUTION	415-933	DEPT. TOTAL	\$ 13,391.70	\$ 4,880.31	\$ 33,026.58	\$ 7,392.39
WASTEWATER TREATMT.	415-934	DEPT. TOTAL	\$ 10,486.87	\$ 830.27	\$ 31,498.41	\$ 2,551.92
UTILITY NON-DEPT.	415-999	DEPT. TOTAL	\$ 7,156.91	\$ -	\$ 20,658.51	\$ -
SANITATION	430-935	DEPT. TOTAL	\$ 11,306.66	\$ -	\$ 36,733.20	\$ 3,200.70
TRANSFER STATION	430-936	DEPT. TOTAL	\$ 6,961.56	\$ 203.20	\$ 20,871.03	\$ 346.23
AIRPORT	441-941	DEPT. TOTAL	\$ 2,390.40	\$ -	\$ 7,171.20	\$ -
SCCDAT GRANT	603-987	DEPT. TOTAL	\$ 2,800.00	\$ -	\$ 9,200.00	\$ -
GRAND TOTAL			\$ 294,927.85	\$ 20,176.77	\$ 914,005.38	\$ 65,312.82

DEPARTMENT	FUND	VENDOR NAME	DATE	DESCRIPTION	AMOUNT		
NON-DEPARTMENTAL	GENERAL FUND	AFLAC	1/17/25	AFLAC EMPLOYEE CONTRIB PRE	293.27		
			1/17/25	AFLAC EMPLOYEE CONTRIB PRE	293.27		
			1/17/25	AFLAC EMPLOYEE CONTRIB TAX	21.56		
		AFLAC GROUP INSURANCE	1/17/25	AFLAC EMPLOYEE CONTRIB TAX	21.56		
			1/17/25	AFLAC-CAIC GROUP TAXABLE	13.94		
		JOHN HANCOCK LIFE INSURANCE COMPANY (U	1/17/25	AFLAC-CAIC GROUP TAXABLE	13.94		
			1/02/25	RETIREMENT SAVINGS	200.00		
		KANSAS PAYMENT CENTER	1/17/25	RETIREMENT SAVINGS	200.00		
			1/31/25	RETIREMENT SAVINGS	200.00		
			1/02/25	CHILD SUPPORT	159.23		
		PRE-PAID LEGAL SERVICES	1/17/25	CHILD SUPPORT	159.23		
			1/31/25	CHILD SUPPORT	159.23		
			1/17/25	EMPLOYEE CONTRIBUTIONS	58.76		
		US BANK	1/17/25	EMPLOYEE CONTRIBUTIONS	58.82		
			1/02/25	KPERS 457	1,192.00		
			1/17/25	KPERS 457	1,192.00		
		WELLINGTON RECREATION COMMISSION	1/31/25	KPERS 457	1,192.00		
			1/17/25	EMPLOYEE CONTRIBUTIONS	131.12		
			1/17/25	EMPLOYEE CONTRIBUTIONS	131.12		
		CITY OF WELLINGTON	1/02/25	TRANSFER WITHHOLDING	17,553.64		
			1/17/25	TRANSFER WITHHOLDING	14,297.54		
			1/31/25	TRANSFER WITHHOLDING	14,065.76		
			1/02/25	FICA TRANSFER	12,420.29		
			1/17/25	FICA TRANSFER	11,076.63		
			1/31/25	FICA TRANSFER	11,364.07		
			1/02/25	MEDICARE TRANSFER	2,904.74		
			1/17/25	MEDICARE TRANSFER	2,590.46		
			1/31/25	MEDICARE TRANSFER	2,657.75		
			1/02/25	KP&F CONTRIBUTION	8,309.42		
			1/17/25	KP&F CONTRIBUTION	6,701.15		
			1/31/25	KP&F CONTRIBUTION	6,396.81		
		CITY OF WELLINGTON	1/02/25	KPERS CONTRIBUTION	2,059.02		
			1/17/25	KPERS CONTRIBUTION	2,076.23		
			1/31/25	KPERS CONTRIBUTION	1,976.27		
			1/02/25	KPERS T2 CONTRIBUTION	468.25		
			1/17/25	KPERS T2 CONTRIBUTION	463.62		
			1/31/25	KPERS T2 CONTRIBUTION	442.47		
			1/02/25	KPERS T3 CONTRIBUTION	2,424.96		
			1/17/25	KPERS T3 CONTRIBUTION	2,384.13		
			1/31/25	KPERS T3 CONTRIBUTION	2,476.17		
			1/17/25	OPTIONAL LIFE	175.35		
			1/17/25	OPTIONAL LIFE	175.41		
			1/17/25	OPTIONAL LIFE P & F	77.88		
		1/17/25	OPTIONAL LIFE P & F	77.91			
		1/17/25	OPTIONAL LIFE SPOUSE	47.54			
		1/17/25	OPTIONAL LIFE SPOUSE	47.57			
		CITY OF WELLINGTON	1/02/25	TRANSFER STATE WITHHOLDING	9,281.43		
			1/17/25	TRANSFER STATE WITHHOLDING	8,055.11		
			1/31/25	TRANSFER STATE WITHHOLDING	8,266.84		
		TOTAL:					157,005.47
		MAYOR AND COUNCIL	GENERAL FUND	GOOGLE LLC	12/31/24	GOOGLE G	78.88
				KANSAS MAYORS ASSOCIATION	1/17/25	MEMBERSHIP DUES	50.00
				KANSAS MUNICIPAL INSURANCE TRUST	1/03/25	COUNCIL	7.00
CITY OF WELLINGTON	1/17/25			FICA TRANSFER	49.60		
	1/17/25			MEDICARE TRANSFER	11.60		

DEPARTMENT	FUND	VENDOR NAME	DATE	DESCRIPTION	AMOUNT
				TOTAL:	197.08
CITY MANAGER	GENERAL FUND	ALLIANCE BUSINESS SERVICES	1/17/25	IP GLEX SERVICES	157.08
		VISA	12/31/24	MOTEL STAY	342.59
			12/31/24	DOOR KNOB	123.61
			12/31/24	IDVILLE-PVC CARD-30 MIL WH	45.84
		GOOGLE LLC	12/31/24	GOOGLE G	28.69
		INTERNATIONAL CITY-COUNTY	1/31/25	ICMA MEMBERSHIP RENEWAL	746.37
		KANSAS ASSOCIATION OF CITY/COUNTY MGMT	1/17/25	2025 MEBERSHIP-JEFF PORTER	200.00
		KANSAS MUNICIPAL INSURANCE TRUST	1/03/25	CITY MANAGER	286.00
		CITY OF WELLINGTON	1/02/25	FICA TRANSFER	529.34
			1/17/25	FICA TRANSFER	529.34
			1/31/25	FICA TRANSFER	517.28
			1/02/25	MEDICARE TRANSFER	123.79
			1/17/25	MEDICARE TRANSFER	123.79
			1/31/25	MEDICARE TRANSFER	120.97
		CITY OF WELLINGTON	1/02/25	KPERS RETIREE-EMPL CONTRI	219.00
			1/17/25	KPERS RETIREE-EMPL CONTRI	219.00
			1/31/25	KPERS RETIREE-EMPL CONTRI	216.57
			1/02/25	KPERS INS CONTRIBUTION	64.63
			1/17/25	KPERS INS CONTRIBUTION	64.63
			1/31/25	KPERS INS CONTRIBUTION	61.13
			1/02/25	KPERS CONTRIBUTION	185.19
			1/17/25	KPERS CONTRIBUTION	185.19
			1/31/25	KPERS CONTRIBUTION	185.19
			1/02/25	KPERS T2 CONTRIBUTION	442.39
			1/17/25	KPERS T2 CONTRIBUTION	442.39
			1/31/25	KPERS T2 CONTRIBUTION	408.37
			TOTAL:		6,568.37
CITY CLERK'S OFFICE	GENERAL FUND	ALLIANCE BUSINESS SERVICES	1/17/25	IP GLEX SERVICES	261.80
			1/17/25	IP GLEX SERVICES	52.35
		AMAZON CAPITAL SERVICES	1/24/25	COLORED FILE FOLDERS	38.99
			12/31/24	RECEIPT PAPER	20.70
			1/31/25	3 RING BINDERS	11.98
			12/31/24	WAL CALENDAR	13.92
		GOOGLE LLC	12/31/24	GOOGLE G	21.52
		KANSAS MUNICIPAL INSURANCE TRUST	1/03/25	CLERK'S OFFICE	152.00
		QUADIENNT LEASING USA, INC.	1/24/25	LEASE POSTAGE MACHINE	252.48
		CITY OF WELLINGTON	1/02/25	FICA TRANSFER	476.03
			1/17/25	FICA TRANSFER	479.01
			1/31/25	FICA TRANSFER	528.56
			1/02/25	MEDICARE TRANSFER	111.32
			1/17/25	MEDICARE TRANSFER	112.02
			1/31/25	MEDICARE TRANSFER	123.62
		CITY OF WELLINGTON	1/02/25	KPERS INS CONTRIBUTION	82.58
			1/17/25	KPERS INS CONTRIBUTION	82.58
			1/31/25	KPERS INS CONTRIBUTION	82.73
			1/02/25	KPERS T3 CONTRIBUTION	801.87
			1/17/25	KPERS T3 CONTRIBUTION	801.87
			1/31/25	KPERS T3 CONTRIBUTION	803.33
			TOTAL:		5,311.26
UTILITY COLLECTION	GENERAL FUND	ALLIANCE BUSINESS SERVICES	1/17/25	IP GLEX SERVICES	52.35
		AMAZON CAPITAL SERVICES	12/31/24	CALCULATOR RIBBON	15.35
			12/31/24	STAPLES	20.36

DEPARTMENT	FUND	VENDOR NAME	DATE	DESCRIPTION	AMOUNT
			12/31/24	RECEIPT PAPER	117.20
			12/31/24	HIGHLIGHTERS	7.28
			12/31/24	HIGHLIGHTERS	7.99
			1/31/25	2 X STANDING DESK CONVERTE	179.98
		ENTERPRISE FM TRUST-ENTERPRISE FLEET M	1/10/25	MAINTENANCE MANAGEMENT	12.00
		GOOGLE LLC	12/31/24	GOOGLE G	43.03
		KANSAS MUNICIPAL INSURANCE TRUST	1/03/25	UTILITY OFFICE	938.00
		QUADIENT LEASING USA, INC.	1/24/25	LEASE/MAIL MACHINE	1,248.48
		SPMR LLC	1/17/25	SPMR SMARPHONE LICENSE	6,272.20
			1/17/25	SPMR SMARPHONE DATA HOSTIN	1,528.52
			1/17/25	SPMR WEB SEAT LICENSE/SUPP	2,090.74
		UNITED STATES POSTMASTER	1/24/25	POSTAGE PERMIT	350.00
		VERIZON WIRELESS	12/31/24	620-440-2560 SMART PHONE	41.51
			1/24/25	CELL PHONE METER READER	41.51
			1/31/25	METER READER	41.51
		CITY OF WELLINGTON	1/10/25	POSTAGE	1,834.47
		CITY OF WELLINGTON	1/02/25	FICA TRANSFER	438.97
			1/17/25	FICA TRANSFER	438.97
			1/31/25	FICA TRANSFER	501.18
			1/02/25	MEDICARE TRANSFER	102.67
			1/17/25	MEDICARE TRANSFER	102.67
			1/31/25	MEDICARE TRANSFER	117.22
		CITY OF WELLINGTON	1/02/25	KPERS INS CONTRIBUTION	80.39
			1/17/25	KPERS INS CONTRIBUTION	80.39
			1/31/25	KPERS INS CONTRIBUTION	80.83
			1/02/25	KPERS CONTRIBUTION	207.64
			1/17/25	KPERS CONTRIBUTION	207.64
			1/31/25	KPERS CONTRIBUTION	207.64
			1/02/25	KPERS T3 CONTRIBUTION	572.98
			1/17/25	KPERS T3 CONTRIBUTION	572.98
			1/31/25	KPERS T3 CONTRIBUTION	577.27
				TOTAL:	19,131.92
GENERAL SERVICES	GENERAL FUND	TEMPORARY VENDO VICTORY IN THE VALLEY	1/24/25	JIM BURKEY MEMORIAL	50.00
		HAND IN HAND HOSPICE	1/31/25	MEMORIAL FOR CAROL COLLINS	50.00
		AMAZON CAPITAL SERVICES	1/24/25	40 BOXES OF PAPER	1,534.08
			1/31/25	12 VOLT RECHARGEABLE BATTE	23.27
		AMERICAN LEGION	1/17/25	RUSSELL MILLER MEMORIAL	50.00
		ENTERPRISE FM TRUST-ENTERPRISE FLEET M	1/10/25	MAINTENANCE MANAGEMENT	6.00
		GOOGLE LLC	12/31/24	GOOGLE LLC	210.00
		GORDON CPA LLC	1/31/25	2024 AUDITING SERVICES	1,000.00
		HIGH TOUCH TECHNOLOGIES	1/17/25	KSGOVJOBS.COM SUBSCRIPTION	600.00
		KANSAS GAS SERVICE	12/31/24	317 S WASHINGTON AVE	540.18
		LEAGUE OF KANSAS MUNICIPALITIES	1/17/25	2025 DUESASSESSED VALUATIO	2,900.81
			1/17/25	2025 CITY MEMBERSHIP DUES	475.00
			1/17/25	2025 SUBSCRIP TO KS GOV JO	340.00
		TRANSUNION RISK AND ALTERNATIVE DATA	12/31/24	EMPLOYEE BCKGRD CHECKS	75.00
		USA CONNECTIONS	1/02/25	INTERNET SERVICES	104.74
			1/31/25	FIBER SERVICES	102.07
		WELLINGTON AREA CHAMBER OF COMMERCE	1/17/25	2025 MEMBERSHIP INVESTMENT	225.00
				TOTAL:	8,286.15
CONTRIBUTIONS	GENERAL FUND	RAINBOW FIREWORKS, INC.	1/16/25	JULY 4TH FIREWORKS	3,000.00
				TOTAL:	3,000.00
JANITORIAL	GENERAL FUND	AMAZON CAPITAL SERVICES	1/31/25	VAC BAGS FOR TORNADO	13.41

DEPARTMENT	FUND	VENDOR NAME	DATE	DESCRIPTION	AMOUNT
		BUSINESS PROTECTION EQUIPMENT CORP.	1/31/25	NEW OIL PUMP FOR SHREDDER	154.52
		SHAWN R. DEJARNETT	1/31/25	CITY PROSECUTOR FEES	4,120.00
		GOOGLE LLC	12/31/24	GOOGLE G	7.18
		KANSAS MUNICIPAL INSURANCE TRUST	1/03/25	ADMIN CUSTODIAN	673.00
		QUILL CORPORATION	1/17/25	701 STORAGE BOXES	89.99
		SCHAMMERHORN, INC.	1/31/25	BEW BLINDS FOR CLERK WINDO	1,662.95
		SUNFLOWER CUSTOM T'S	1/31/25	2 X CITY OF WELLINGTON FLA	72.00
		WAXIE SANITARY SUPPLY	1/17/25	TOILET PAPER, WIPES	151.61
			1/31/25	PAPER TOWELS/TRASH BAGS	75.08
			1/31/25	ED C 70 DISINFECTANT	138.44
		CITY OF WELLINGTON	1/02/25	FICA TRANSFER	82.25
			1/17/25	FICA TRANSFER	79.91
			1/31/25	FICA TRANSFER	83.03
			1/02/25	MEDICARE TRANSFER	19.23
			1/17/25	MEDICARE TRANSFER	18.69
			1/31/25	MEDICARE TRANSFER	19.42
		CITY OF WELLINGTON	1/02/25	KPERS INS CONTRIBUTION	13.77
			1/17/25	KPERS INS CONTRIBUTION	13.39
			1/31/25	KPERS INS CONTRIBUTION	13.39
			1/02/25	KPERS CONTRIBUTION	133.69
			1/17/25	KPERS CONTRIBUTION	130.04
			1/31/25	KPERS CONTRIBUTION	130.04
		WHEAT COUNTRY LAUNDRY	1/31/25	10 LBS RAGS/3 MOP HEADS	25.50
				TOTAL:	7,920.53
I. T./G.I.S.	GENERAL FUND	AMAZON CAPITAL SERVICES	12/31/24	SLA BATTERY F1 TERMINAL	28.70
		ENTERPRISE FM TRUST-ENTERPRISE FLEET M	1/10/25	MAINTENANCE MANAGEMENT	6.00
		GOOGLE LLC	12/31/24	GOOGLE G	14.35
		VERIZON WIRELESS	12/31/24	JETPACKS	80.02
		CITY OF WELLINGTON	1/02/25	FICA TRANSFER	271.19
			1/17/25	FICA TRANSFER	271.19
			1/31/25	FICA TRANSFER	296.51
			1/02/25	MEDICARE TRANSFER	63.42
			1/17/25	MEDICARE TRANSFER	63.42
			1/31/25	MEDICARE TRANSFER	69.35
		CITY OF WELLINGTON	1/02/25	KPERS INS CONTRIBUTION	47.11
			1/17/25	KPERS INS CONTRIBUTION	47.11
			1/31/25	KPERS INS CONTRIBUTION	47.82
			1/02/25	KPERS CONTRIBUTION	96.88
			1/17/25	KPERS CONTRIBUTION	96.88
			1/31/25	KPERS CONTRIBUTION	106.74
			1/02/25	KPERS T3 CONTRIBUTION	360.55
			1/17/25	KPERS T3 CONTRIBUTION	360.55
			1/31/25	KPERS T3 CONTRIBUTION	357.64
				TOTAL:	2,685.43
POLICE	GENERAL FUND	TEMPORARY VENDO DETECTACHEM	1/31/25	2 MOBILE DETECT TEST KIT T	104.70
		DETECTACHEM	1/31/25	SHIPPING	15.62
		ASCENSION MEDICAL GROUP VIA CHRISTI, P	12/31/24	POLICE EMPLOYEE PHYSICAL	100.00
		CINTAS	12/31/24	1ST AID KIT RESUPPLY	96.70
			1/31/25	JAN 25' 1ST AID KIT SUPPLI	112.52
			1/17/25	2025 LIFE READY AED MANAGE	197.17
		VISA	12/31/24	FUEL	54.56
			12/31/24	FENTANYL TRAINING	225.00
			12/31/24	5 X EVIDENCE MAIL	94.94
			12/31/24	KPOA MEMBERSHIP	570.00

DEPARTMENT	FUND	VENDOR NAME	DATE	DESCRIPTION	AMOUNT
			12/31/24	4 X INK CARTRIDGES	236.99
		CULLIGAN OF WICHITA	12/31/24	CULLIGAN OF WICHITA	35.00
			12/31/24	WATER	9.00
			1/31/25	5 X 5 GAL WATER	39.25
			1/31/25	TRANSPORTATION FEE	5.00
		ENTERPRISE FM TRUST-ENTERPRISE FLEET M	1/10/25	MAINTENANCE MANAGEMENT	1,174.57
		FLOCK SAFETY	12/31/24	LPR CAMERAS	10,000.00
			12/31/24	8 FLOCK SAFETY ADV SEARCH	2,000.00
		GALAXIE BUSINESS EQUIPMENT, INC.	1/17/25	OFFICE 365	9.35
		GALLS, LLC	12/31/24	THOROGOOD GEN-FLEX2 BOOTS	152.64
			12/31/24	MENS SOFT SHELL JACKET	57.16
			12/31/24	ZIP JOB SHIFT	52.80
			12/31/24	SHIPPING	18.99
			1/17/25	TACTICAL POLO W/BADGING	58.10
			1/17/25	TACTICAL POLO W/BADGING	51.94
			1/17/25	SHIPPING	7.60
			1/17/25	POINT BLANK HILITE CARRIER	999.99
			1/17/25	PBE ENDEAVOR GEN 3 CARRIER	350.00
			1/31/25	UA STELLAR G2	85.00
			1/31/25	GLOVE POUCH	27.37
			1/31/25	MENS POLO W/BADGING	103.88
			1/31/25	SHIPPING	15.42
			1/31/25	TRU-SPEC TACTICAL PANTS	50.12
			1/31/25	SHIPPING	3.57
		GOOGLE LLC	12/31/24	GOOGLE G	164.92
		GRANITE TELECOMMUNICATIONS	1/17/25	1/2 911 LOBBY PHONE	43.97
			1/17/25	7 PHONE LINES SERVICE	615.46
		JOHN E. REID & ASSOCIATES, INC	1/17/25	INTERVIEW/INTERROGATION TR	585.00
		KANSAS GAS SERVICE	12/31/24	GAS BILL-200 NORTH C	212.84
		KANSAS MUNICIPAL GAS AGENCY	12/31/24	BULK GAS TRANSPORT	428.40
		KANSAS MUNICIPAL INSURANCE TRUST	1/03/25	POLICE DEPT	16,184.00
		LEAGUE OF KANSAS MUNICIPALITIES	1/31/25	1ST AMENDMENT PUB MEETINGS	25.00
		O'REILLY AUTOMOTIVE STORES, INC.	1/17/25	WIPER-GL	6.99
			1/17/25	HEADLIGHT CAPSULE	33.47
			1/31/25	2 WIPER BLADES	40.78
		POCKET PRESS, LLC	12/31/24	1 KS HANDBOOK	19.99
			12/31/24	20 POCKET CRIMINAL LAW BOO	199.80
		RAUSCH TIRE & EQUIPMENT	1/17/25	TIRE REPAIR #195	21.50
		REDLANDS OFFICE SOLUTIONS	12/31/24	CARTRIDGE TAPE	29.44
		SALTUS TECHNOLOGIES, LLC	1/31/25	DIGITICKET SOLUTION FEB-JU	5,644.80
		SUMNER COUNTY SHERIFF	12/31/24	PRISONER CARE/MAINTENANCE	660.00
		AT&T	1/17/25	TELEPHONE BILL	229.26
		SUNFLOWER CUSTOM T'S	1/17/25	7 X BASEBALL HATS-ADULT	147.00
			1/17/25	1 X BASEBALL HAT-YOUTH	18.50
			1/17/25	14 X HOODIES S-XL	350.00
			1/17/25	3 X HOODIES 2XL	81.00
		TOUCHTONE COMMUNICATIONS	12/31/24	LONG DISTANCE	61.33
		UNDERGROUND VAULTS & STORAGE	12/31/24	RECORDS RETRIEVAL	7.60
		USA CONNECTIONS	1/02/25	INTERNET SERVICES	26.75
			1/02/25	INTERNET SERVICES	104.74
			1/31/25	INTERNET SERVICE	24.07
			1/31/25	FIBER SERVICES	102.07
		VERIZON WIRELESS	12/31/24	SURVEILLANCE CAMERAS	80.02
			12/31/24	PATROL CARS	360.09
			12/31/24	DEPT ISSUED CELL PHONES	745.68
		WAXIE SANITARY SUPPLY	1/17/25	TOILET PAPER, WIPES	125.34

DEPARTMENT	FUND	VENDOR NAME	DATE	DESCRIPTION	AMOUNT
		WELLINGTON ANIMAL CLINIC	12/31/24	DEC ANIMAL CONTROL CARE	500.00
		WELLINGTON WHEEL	1/17/25	TIRE REPLACEMENT	203.77
			1/17/25	LABOR	15.00
			1/17/25	TIRE FEE	4.25
			1/17/25	GOODYEAR 2565/60R18	305.06
			1/17/25	LABOR	44.00
			1/17/25	TIRE FEE	4.25
		CITY OF WELLINGTON	1/02/25	FICA TRANSFER	3,903.01
			1/17/25	FICA TRANSFER	2,614.91
			1/31/25	FICA TRANSFER	2,821.75
			1/02/25	MEDICARE TRANSFER	912.84
			1/17/25	MEDICARE TRANSFER	611.55
			1/31/25	MEDICARE TRANSFER	659.93
		CITY OF WELLINGTON	1/02/25	KP&F CONTRIBUTION	14,138.82
			1/17/25	KP&F CONTRIBUTION	9,485.32
			1/31/25	KP&F CONTRIBUTION	9,773.68
			1/02/25	KPERS INS CONTRIBUTION	72.72
			1/17/25	KPERS INS CONTRIBUTION	54.08
			1/31/25	KPERS INS CONTRIBUTION	53.72
			1/02/25	KPERS CONTRIBUTION	299.57
			1/17/25	KPERS CONTRIBUTION	191.43
			1/31/25	KPERS CONTRIBUTION	187.91
			1/02/25	KPERS T3 CONTRIBUTION	406.54
			1/17/25	KPERS T3 CONTRIBUTION	333.72
			1/31/25	KPERS T3 CONTRIBUTION	333.72
		VALLEY MANAGEMENT, LLC dba WHEAT COUNT	1/17/25	MAT SERVICE	87.90
				TOTAL:	92,514.21
FIRE	GENERAL FUND	A AND A AUTO SUPPLY	12/31/24	CANISTER PURGE VALVE	44.63
			1/24/25	BALL JOINT STUD	2.44
			1/24/25	FUEL SHUT OFF VALVE	5.65
		AIRGAS USA, LLC	12/31/24	OXYGEN	184.45
			12/31/24	OTHER BOTTLE	32.24
			12/31/24	OXYGEN	16.12
			12/31/24	HAZMAT CHARGE	48.84
			1/31/25	OXYGEN	93.08
			1/31/25	ENERGY, DELIVERY, GUEL CHAR	85.39
			1/31/25	HAZMAT	21.75
		BOUND TREE MEDICAL, LLC	1/31/25	C4 MIDAZOLAM	65.99
		VISA	12/31/24	SUBSCRIPTION RENEWAL	378.00
			12/31/24	BOAT FUEL	8.83
			12/31/24	ANNUAL TRAINING	225.00
			12/31/24	MEMBERSHIP/DUES	215.00
			12/31/24	NATIONAL CERTIFICATE	30.00
			12/31/24	MEAL	9.36
			12/31/24	LODGING	286.20
			12/31/24	MEAL	11.04
			12/31/24	MASKING TAPE	5.49
			12/31/24	WIRE ROPE/THIMBS	11.16
			12/31/24	CLEANERS	8.99
		COUNTRYSIDE MOTORS, L.L.C	12/31/24	2017 FD INSPECTION/REPAIR	5,139.02
			1/31/25	OIL CHANGE 2019 CHEVY	74.83
		ENTERPRISE FM TRUST-ENTERPRISE FLEET M	1/10/25	MAINTENANCE MANAGEMENT	225.61
		GALLS, LLC	12/31/24	UNIFORM SHIRTS	106.97
		GOOGLE LLC	12/31/24	GOOGLE G	200.77
		GRANITE TELECOMMUNICATIONS	1/17/25	1/2 911 LOBBY PHONE	43.97

DEPARTMENT	FUND	VENDOR NAME	DATE	DESCRIPTION	AMOUNT
		KANSAS GAS SERVICE	12/31/24	GAS BILL-200 NORTH C	390.18
		KANSAS MUNICIPAL GAS AGENCY	12/31/24	BULK GAS TRANSPORT	795.60
		KANSAS MUNICIPAL INSURANCE TRUST	1/03/25	FIRE DEPT	29,795.00
		KELLY COMPLIANCE	12/31/24	KELLY COMPLIANCE	35.00
		LIFE-ASSIST, INC.	1/31/25	AMBU BLUE SENSOR ELECORED	135.90
			1/31/25	HYFIN VENT COMPACT CHEST S	37.68
			1/31/25	AMBU SPUR II BAG MASK RES	311.52
			1/31/25	HYFIN VENT CHEST SEAL TWIN	71.20
			1/31/25	POCKET BVM BAG MASK RESUS	115.96
			1/31/25	MICR ADULT PEDI INTUBATED	438.00
			1/31/25	LACTATED RINGERS IV	138.00
			1/31/25	SODIUM CHLORIDE	147.84
			1/31/25	GLOVES	112.50
		MEBULBS, INC.	1/31/25	24 LIGHT BULBS	476.88
			1/31/25	FREIGHT/SHIPPING	106.11
		OLDRIDGE TIRE	1/31/25	2062 REAR TIRE REPLACEMENT	220.00
			1/31/25	ROTATE TIRES	40.00
		PENGUIN MANAGEMENT, INC.	1/31/25	6 MNTH PLAN	474.00
			1/31/25	DEVELOPMENT/INFRASTRUCTURE	12.00
		PERSONAL THREADS	1/31/25	LOGO EMBROIDERY	32.00
		RABER FORD, LLC	1/31/25	2024 FORD ECONOLINE FILTER	96.12
			1/31/25	OIL CHANGE	72.17
			1/31/25	2018 F450 AIR FILTER/OIL F	278.89
		AT&T	1/17/25	TELEPHONE BILL	343.90
		TOUCHTONE COMMUNICATIONS	12/31/24	LONG DISTANCE	22.44
		TRACTOR SUPPLY CREDIT PLAN	12/31/24	EXTENSION CORDS	39.98
			12/31/24	TSC HICKORY CRAFT/TAPE	41.95
		USA CONNECTIONS	1/02/25	FIBER SERVICES	104.74
			1/02/25	INTERNET SERVICES	26.75
			1/31/25	INTERNET SERVICE	24.07
			1/31/25	FIBER SERVICES	102.07
		VERIZON WIRELESS	12/31/24	620-440-0060 MIFI	40.01
			12/31/24	620-440-0348 JET PAK	40.01
			12/31/24	620-440-2589	40.01
			1/31/25	FIRE MIFI	40.01
		WAXIE SANITARY SUPPLY	1/17/25	MULTIFOLD PAPER TOWELS	37.07
		CITY OF WELLINGTON	1/02/25	FICA TRANSFER	3,967.05
			1/17/25	FICA TRANSFER	3,751.24
			1/31/25	FICA TRANSFER	3,565.36
			1/02/25	MEDICARE TRANSFER	927.76
			1/17/25	MEDICARE TRANSFER	877.28
			1/31/25	MEDICARE TRANSFER	833.83
		CITY OF WELLINGTON	1/02/25	KP&F CONTRIBUTION	14,531.69
			1/17/25	KP&F CONTRIBUTION	13,635.95
			1/31/25	KP&F CONTRIBUTION	12,297.51
			1/02/25	KPERS INS CONTRIBUTION	16.70
			1/17/25	KPERS INS CONTRIBUTION	16.70
			1/31/25	KPERS INS CONTRIBUTION	16.70
			1/02/25	KPERS T3 CONTRIBUTION	162.20
			1/17/25	KPERS T3 CONTRIBUTION	162.20
			1/31/25	KPERS T3 CONTRIBUTION	162.20
		ZOLL MEDICAL CORPORATION GPO	1/31/25	CHILD CUFF	54.12
			1/31/25	ELECTRODES	1,123.50
			1/31/25	INFANT CUFF	54.12
				TOTAL:	98,972.49

DEPARTMENT	FUND	VENDOR NAME	DATE	DESCRIPTION	AMOUNT		
AUDITORIUM	GENERAL FUND	ELECTRONIC CONTRACTING CO	1/03/25	ALARM MONITORING	90.00		
		GRANITE TELECOMMUNICATIONS	1/17/25	AUD. ELEVATOR LINE	91.41		
		KANSAS GAS SERVICE	12/31/24	218 S HIGH	353.63		
			12/31/24	206 N WASHINGTON	2,469.32		
		AT&T	1/17/25	TELEPHONE BILL	<u>114.64</u>		
				TOTAL:	3,119.00		
FACILITIES	GENERAL FUND	ADVANCED MECHANICAL SOLUTIONS, LLC	12/31/24	REPAIRS TO HOT WATER PUMP	21,675.00		
			12/31/24	LABOR	1,950.00		
			1/17/25	4TH MONTH RENTAL CHARGE	68,721.00		
		GOOGLE LLC	12/31/24	GOOGLE G	7.18		
		GRANITE TELECOMMUNICATIONS	1/17/25	4 PHONE LINES	355.92		
		INTERSTATE ALL BATTERY	1/31/25	BATTERIES FOR FIRE ALARM	298.50		
		JOHNSON CONTROLS FIRE PROTECTION LP	12/31/24	SERVICE AGREEMENT	11,576.43		
			12/31/24	MONITORING SERVICE AGREEME	609.00		
		KANSAS GAS SERVICE	12/31/24	DEC '24 GAS TRANSPORT	3,672.75		
			12/31/24	1323 N A ST	956.76		
		KANSAS MUNICIPAL GAS AGENCY	12/31/24	BULK GAS TRANSPORT	7,878.00		
		KANSAS MUNICIPAL INSURANCE TRUST	1/03/25	FACILITIES	1,389.00		
		KRUSE CORPORATION	1/17/25	PERVINATIVE MAINT. AGREEME	356.00		
		MYERS AUTOMATIC FIRE PROTECTION LLC	1/31/25	QTRLY FIRE SPRINKLER INSPE	350.00		
		O'REILLY AUTOMOTIVE STORES, INC.	1/17/25	MISC SUPPLIES	95.22		
			1/17/25	BELTS	41.74		
			1/31/25	BATTERIES FOR GENERATOR	331.26		
			1/31/25	BATTERIES FOR GENERATOR	331.26		
			1/31/25	CORE RETURN	44.00-		
			1/31/25	CORE RETURN	44.00-		
		MILL CREEK LUMBER OF KANSAS INC.	12/31/24	MISC. MATERIALS	458.56		
			12/31/24	TRIPLE EXPAND FOAM	7.49		
			1/03/25	MISC. MATERIALS	13.19		
			1/17/25	BATTERY FOR EMERG LIGHTS	52.99		
			1/17/25	WETVAC FILTER	19.99		
			1/17/25	MISC SUPPLIES	34.98		
			1/17/25	PLUMBING MATERIALS	66.98		
			1/31/25	MISC SUPPLIES	216.17		
			1/31/25	MISC SUPPLIES	15.99		
		USA CONNECTIONS	1/02/25	INTERNET SERVICES	48.75		
			1/31/25	INTERNET SERVICE	46.07		
		WALDORF-RILEY HEATING & COOLING	1/22/25	ROFF TOP UNITS	39,700.00		
		CITY OF WELLINGTON	1/02/25	FICA TRANSFER	144.16		
			1/17/25	FICA TRANSFER	166.12		
			1/31/25	FICA TRANSFER	162.05		
			1/02/25	MEDICARE TRANSFER	33.71		
			1/17/25	MEDICARE TRANSFER	38.85		
			1/31/25	MEDICARE TRANSFER	37.90		
		CITY OF WELLINGTON	1/02/25	KPERS RETIREE-EMPL CONTRI	246.07		
			1/17/25	KPERS RETIREE-EMPL CONTRI	280.47		
			1/31/25	KPERS RETIREE-EMPL CONTRI	<u>253.79</u>		
				TOTAL:	162,551.30		
		PARKS	GENERAL FUND	A AND A AUTO SUPPLY	1/24/25	MOTOR OIL	116.06
				AIRGAS USA, LLC	1/31/25	CYLINDER LEASE RENEWAL	245.00
					1/31/25	SYLINDER LSE RENEWAL	245.00
					1/31/25	HAZMAT CHARGE	80.00
				C & H OUTDOOR, LLC DBA SNO-BIZ	1/17/25	BATTERY & CHARGER FOR SPRA	200.00
VISA	12/31/24			KDOR WICHITA~CDL EXAM	42.03		

DEPARTMENT	FUND	VENDOR NAME	DATE	DESCRIPTION	AMOUNT
			12/31/24	MEALS	83.74
			12/31/24	HOTEL	406.36
			12/31/24	MEALS	84.21
			12/31/24	KDOR WICHITA-CDL	10.75
		ENTERPRISE FM TRUST-ENTERPRISE FLEET M	1/10/25	MAINTENANCE MANAGEMENT	28.40
		GOOGLE LLC	12/31/24	GOOGLE G	14.35
		SCHMIDT & SONS, INC.	1/17/25	TRANSMISSION OIL	109.21
		KANSAS GAS SERVICE	12/31/24	1110 W 4TH ST	42.71
			12/31/24	218 S HIGH	717.99
		KANSAS MUNICIPAL INSURANCE TRUST	1/03/25	PARK DEPT	2,168.00
		O'REILLY AUTOMOTIVE STORES, INC.	1/31/25	OIL FILTER	7.93
		JOHN DEERE FINANCIAL	1/31/25	TRANSMISSION FLUID	113.37
		AT&T	1/17/25	TELEPHONE BILL	114.63
		MILL CREEK LUMBER OF KANSAS INC.	1/31/25	GLOVES	10.99
			12/31/24	MAINTENANCE GARAGE ROOF	1,867.66
			1/31/25	THERMOCOUPLE	14.99
			1/31/25	DEADBOLT LOCK SETS	85.98
			1/31/25	CUTTING WHEEL	139.99
			1/31/25	SYNTHETIC OIL	29.94
			1/31/25	SIR FILTERS	28.00
			1/31/25	MARKING PAINT	8.79
		TRACTOR SUPPLY CREDIT PLAN	12/31/24	MOTOR OIL	54.99
			12/31/24	CHAIN	5.78
		USA CONNECTIONS	1/02/25	INTERNET SERVICES	48.75
			1/31/25	INTERNET SERVICE	46.07
		CITY OF WELLINGTON	1/02/25	FICA TRANSFER	276.44
			1/17/25	FICA TRANSFER	276.44
			1/31/25	FICA TRANSFER	388.37
			1/02/25	MEDICARE TRANSFER	64.65
			1/17/25	MEDICARE TRANSFER	64.65
			1/31/25	MEDICARE TRANSFER	90.82
		CITY OF WELLINGTON	1/02/25	KPERS INS CONTRIBUTION	48.88
			1/17/25	KPERS INS CONTRIBUTION	48.88
			1/31/25	KPERS INS CONTRIBUTION	62.64
			1/02/25	KPERS CONTRIBUTION	218.57
			1/17/25	KPERS CONTRIBUTION	218.57
			1/31/25	KPERS CONTRIBUTION	217.12
			1/02/25	KPERS T3 CONTRIBUTION	256.13
			1/17/25	KPERS T3 CONTRIBUTION	256.13
			1/31/25	KPERS T3 CONTRIBUTION	391.13
		UNIFIRST CORPORATION	1/17/25	UNIFIRST CORPORATION	27.59
			1/17/25	UNIFIRST CORPORATION	27.59
			1/15/25	UNIFIRST CORPORATION	27.59
			1/15/25	UNIFIRST CORPORATION	27.59
			1/15/25	27.59	27.59-
			1/31/25	UNIFIRST CORPORATION	<u>27.59</u>
				TOTAL:	10,161.45
STREETS	GENERAL FUND	TEMPORARY VENDO JEFF FERGUSON	1/17/25	SAFETY BOOT REIMBURSEMENT	199.73
		A AND A AUTO SUPPLY	1/10/25	WIPER BLADES FOR ALL TRKS	103.45
			1/03/25	COUPLING	8.98
			1/03/25	AIR BRAKE HOSE	2.88
			1/10/25	WIPER BLADES	25.38
			1/10/25	RETURN BLADES	23.08-
			1/10/25	TOGGLE SWITCH TRK 132	7.49
			1/10/25	SOLENOID FOR SALT BRINE SP	30.04

DEPARTMENT	FUND	VENDOR NAME	DATE	DESCRIPTION	AMOUNT
			1/17/25	SWITCH FOR PTO ON TRK 52	9.96
			1/24/25	HOSE FITTINGS	84.44
			1/31/25	GRADER LIGHTS	32.07
		ALLIANCE BUSINESS SERVICES	1/17/25	IP GLEX SERVICES	157.08
		AMAZON CAPITAL SERVICES	1/24/25	DIGITAL TIRE INFLATORS	71.24
			1/17/25	OIL FOR AIR COMPRESSOR	69.74
			1/24/25	PUMP FOR SAND SPREADER	154.99
			1/17/25	WINDOW SHADE FOR OFFICE WI	21.59
			12/31/24	SWIFFER WETJET SOLUTION	11.97
			12/31/24	3 RING BINDERS	26.99
			1/17/25	RETRACTABLE HOSE REELS & S	443.12
			1/24/25	OIL SIGHT GLASS FOR AIR CO	11.99
			1/17/25	CONTACTOR POWER SEAL	42.14
			1/03/25	RATCHET CHAIN BINDERS	59.24
			1/17/25	SAND SPREADER ON TRK 52	154.99
			1/24/25	AIR FILTER REGULATOR	69.98
			1/10/25	REPLACEMENT INK PAD	12.59
			12/31/24	SWIFFER WETJET SOLUTION	7.99
			1/17/25	COMPRESSED AIR LINE KIT	230.00
			1/24/25	AIR FILTERFOR AIR COMPRESS	42.24
		BERRY TRACTOR & EQUIPMENT	1/31/25	BROOMS FOR M3 SWEEPER	3,017.66
		C & H OUTDOOR, LLC DBA SNO-BIZ	1/17/25	BULK SALT BRINE DELIVERY	2,490.00
		VISA	12/31/24	REQUEST FOR QUALIFICATIONS	127.65
		DE LAGE LANDEN FINANCIAL SERVICES, INC	1/24/25	LG FORMAT SCANNER PAYMENT	80.14
		ENTERPRISE FM TRUST-ENTERPRISE FLEET M	1/10/25	MAINTENANCE MANAGEMENT	143.14
		FLEETPRIDE, INC.	1/31/25	HUBCAP FOR TRAILER	39.29
		FOLEY INDUSTRIES, INC.	1/31/25	CUTTING EDGES/END EDGES	900.38
		4 STATE MAINTENANCE SUPPLY, INC.	1/31/25	PAPER TOWELS	55.08
			1/31/25	FUEL SURCHARGE	4.00
			1/31/25	POP UP WIPES	85.53
			1/31/25	T-SHIRT RAGS	118.44
			1/31/25	FUEL SURCHARGE	4.00
		GOOGLE LLC	12/31/24	GOOGLE G	21.52
		KANSAS GAS SERVICE	12/31/24	19 INDUSTRIAL AVE	3,375.92
		KANSAS MUNICIPAL INSURANCE TRUST	1/03/25	STREET DEPT	13,495.00
		MID-WEST ELECTRIC SUPPLY, INC.	12/31/24	MATERIALS - SHOP LIGHTING	40.38
			12/31/24	MATERIALS FOR LOCKER RM LT	115.20
			1/31/25	MATERIALS FOR SHOP LIGHTIN	7.80
			1/31/25	MATERIALS FOR AIR COMPRESS	33.43
			1/31/25	MISC. MATERIALS FOR SHOP	117.92
			1/31/25	ELECTRICAL MATERIALS	336.57
		NEWMAN TRAFFIC SIGNS, INC	12/31/24	SIGN BOLTS	28.59
		O'REILLY AUTOMOTIVE STORES, INC.	1/17/25	WIPER BLADES FOR TRUCKS	54.76
			1/03/25	SHUT OFF VALVE	7.29
			1/17/25	ROCKER SWITCH FOR PTO	11.99
			1/17/25	DISCONNECT	4.19
			1/17/25	BRAKE CLEANER	41.88
			1/17/25	GREASE	50.94
			1/17/25	RETURN ROCKER SWITCH	11.99-
			1/31/25	M/R TRUCK #76,118,159	334.32
		JOHN DEERE FINANCIAL	1/31/25	TRANSMISSION FLUID	113.37
		PRESSURE WASHER SALES	1/31/25	TRIGGER GUN FOR PRESSURE W	141.10
		REDLANDS OFFICE SOLUTIONS	1/31/25	1 CASE COPY PAPER	43.99
			1/31/25	1 DOZEN HIGHLIGHTERS	8.94
		REYNOLDS TIRE AND REPAIR	12/31/24	NEW TIRE FOR DUMP TRUCK	250.00
			12/31/24	TIRE REPAIR ON PICKUP	17.50

DEPARTMENT	FUND	VENDOR NAME	DATE	DESCRIPTION	AMOUNT
		MILL CREEK LUMBER OF KANSAS INC.	12/31/24	6 ' STEPLADDE4R	157.19
			1/17/25	MATERIALS FOR SALT BRINE P	24.68
			1/17/25	CIRCUIT BREAKER FOR SALT B	17.99
			1/17/25	2 GAL TANK SPRAYER	44.99
			1/17/25	PARTS FOR SHOP AIR LINE	14.98
			1/17/25	PARTS FOR SMALL CHAINSAW	68.75
			1/31/25	BOARDS FOR TILT TRAILER	233.16
			1/31/25	MISC MATERIALS FOR SHOP	27.57
			1/31/25	DRILL BITS	11.77
			1/31/25	MATERIALS FOR TILT TRAILER	120.34
			1/31/25	BOARDS FOR TILT TRAILER	22.06
			1/31/25	BOARDS FOR TILT TRAILER	22.06
			1/31/25	RETURNED BOARDS	27.43-
			1/31/25	TIN FOR SHOP	748.28
			1/31/25	MISC SUPPLIES FOR SHOP	30.98
			1/31/25	FOAM FOR SHOP	23.16
			1/31/25	COMBO HAMMER DRILL KIT	628.57
			1/31/25	MATERIALS FOR AIR COMPRESS	14.66
		TIFCO INDUSTRIES	1/31/25	SIGN BOLTS	208.49
		TRACTOR SUPPLY CREDIT PLAN	12/31/24	DUPLICATE PAYMENT	29.98-
			12/31/24	RATCHET TIE-DOWN	29.99
		USA CONNECTIONS	1/02/25	FIBER SERVICES	104.69
			1/31/25	FIBER SERVICES	102.07
		VERIZON WIRELESS	1/31/25	ST. MIFI	40.01
		CITY OF WELLINGTON	1/02/25	FICA TRANSFER	1,267.47
			1/17/25	FICA TRANSFER	1,349.97
			1/31/25	FICA TRANSFER	1,343.27
			1/02/25	MEDICARE TRANSFER	296.42
			1/17/25	MEDICARE TRANSFER	315.71
			1/31/25	MEDICARE TRANSFER	314.16
		CITY OF WELLINGTON	1/02/25	KPERS INS CONTRIBUTION	215.63
			1/17/25	KPERS INS CONTRIBUTION	230.16
			1/31/25	KPERS INS CONTRIBUTION	214.77
			1/02/25	KPERS CONTRIBUTION	1,293.73
			1/17/25	KPERS CONTRIBUTION	1,428.12
			1/31/25	KPERS CONTRIBUTION	1,266.11
			1/02/25	KPERS T3 CONTRIBUTION	800.05
			1/17/25	KPERS T3 CONTRIBUTION	806.80
			1/31/25	KPERS T3 CONTRIBUTION	819.37
		UNIFIRST CORPORATION	1/17/25	UNIFIRST CORPORATION	34.12
			1/17/25	UNIFIRST CORPORATION	35.17
			1/15/25	UNIFIRST CORPORATION	34.12
			1/31/25	UNIFIRST CORPORATION	34.12
				TOTAL:	42,513.44
CEMETERY	GENERAL FUND	TEMPORARY VENDO JAMES HEARLSON	1/17/25	BOOT REIMBURSEMENT	100.00
		AMAZON CAPITAL SERVICES	12/31/24	WIRELESS	44.39
			1/17/25	HAND SPREADERS	37.70
		BRC BEARING COMPANY, INC.	1/31/25	BEARINGS FOR MAHINDRA 5035	1,137.23
		VISA	12/31/24	MISC. SUPPLIES	290.80
			12/31/24	COUPLER	24.99
		GOOGLE LLC	12/31/24	GOOGLE G	7.18
		KANSAS GAS SERVICE	12/31/24	1402 E HARVEY	499.62
		KANSAS MUNICIPAL INSURANCE TRUST	1/03/25	CEMETERY	2,845.00
		KELLY COMPLIANCE	12/31/24	KELLY COMPLIANCE	50.25
		O'REILLY AUTOMOTIVE STORES, INC.	1/17/25	WIPER BLADES	27.00

DEPARTMENT	FUND	VENDOR NAME	DATE	DESCRIPTION	AMOUNT
		MILL CREEK LUMBER OF KANSAS INC.	1/31/25	SMALL ANGLE GRINDER	199.99
		USA CONNECTIONS	1/02/25	INTERNET SERVICES	70.75
			12/31/24	PHONE SERVICE	34.95
			1/31/25	INTERNET SERVICE	68.07
		CITY OF WELLINGTON	1/02/25	FICA TRANSFER	244.86
			1/17/25	FICA TRANSFER	243.68
			1/31/25	FICA TRANSFER	252.43
			1/02/25	MEDICARE TRANSFER	57.27
			1/17/25	MEDICARE TRANSFER	56.99
			1/31/25	MEDICARE TRANSFER	59.04
		CITY OF WELLINGTON	1/02/25	KPERS INS CONTRIBUTION	40.13
			1/17/25	KPERS INS CONTRIBUTION	39.94
			1/31/25	KPERS INS CONTRIBUTION	40.72
			1/02/25	KPERS CONTRIBUTION	248.97
			1/17/25	KPERS CONTRIBUTION	254.61
			1/31/25	KPERS CONTRIBUTION	260.87
			1/02/25	KPERS T2 CONTRIBUTION	140.72
			1/17/25	KPERS T2 CONTRIBUTION	133.22
			1/31/25	KPERS T2 CONTRIBUTION	134.47
		UNIFIRST CORPORATION	1/17/25	UNIFIRST CORPORATION	19.31
			1/17/25	UNIFIRST CORPORATION	19.31
			1/15/25	UNIFIRST CORPORATION	19.31
			1/31/25	UNIFIRST CORPORATION	19.31
				TOTAL:	7,723.08
BUILDING AND CODES	GENERAL FUND	ALLIANCE BUSINESS SERVICES	1/17/25	IP GLEX SERVICES	104.72
		VISA	12/31/24	RESOLUTION #6349	124.20
		DE LAGE LANDEN FINANCIAL SERVICES, INC	1/24/25	LG FORMAT SCANNER PAYMENT	80.14
		ENTERPRISE FM TRUST-ENTERPRISE FLEET M	1/10/25	MAINTENANCE MANAGEMENT	12.00
		GOOGLE LLC	12/31/24	GOOGLE G	21.52
		KANSAS MUNICIPAL INSURANCE TRUST	1/03/25	BLDG & CODES	3,842.00
		PROFESSIONAL ENGINEERING	12/31/24	MONTHLY RETAINER-DECEMBER	800.00
		QUADIENT LEASING USA, INC.	1/24/25	LEASE/POSTAGE MACHINE	228.99
		VERIZON WIRELESS	12/31/24	MICRO SUFACE PLANNER	40.01
		CITY OF WELLINGTON	1/02/25	FICA TRANSFER	251.82
			1/17/25	FICA TRANSFER	250.34
			1/31/25	FICA TRANSFER	260.89
			1/02/25	MEDICARE TRANSFER	58.89
			1/17/25	MEDICARE TRANSFER	58.54
			1/31/25	MEDICARE TRANSFER	61.01
		CITY OF WELLINGTON	1/02/25	KPERS INS CONTRIBUTION	43.33
			1/17/25	KPERS INS CONTRIBUTION	43.09
			1/31/25	KPERS INS CONTRIBUTION	42.08
			1/02/25	KPERS CONTRIBUTION	257.02
			1/17/25	KPERS CONTRIBUTION	254.71
			1/31/25	KPERS CONTRIBUTION	246.32
			1/02/25	KPERS T3 CONTRIBUTION	163.73
			1/17/25	KPERS T3 CONTRIBUTION	163.73
			1/31/25	KPERS T3 CONTRIBUTION	162.27
				TOTAL:	7,571.35
LEGAL/COURT	GENERAL FUND	ADDICTION SERVICES	12/31/24	CTY V STEPHEN PETTIGREW	150.00
		ALLIANCE BUSINESS SERVICES	1/17/25	IP GLEX SERVICES	52.36
		AMAZON CAPITAL SERVICES	1/31/25	HANGING FILE BOX	16.01
		CITY ATTORNEYS ASSOC.	1/17/25	CITY ATTORNEYS ASSOC.	35.00
		GOOGLE LLC	12/31/24	GOOGLE G	21.52

DEPARTMENT	FUND	VENDOR NAME	DATE	DESCRIPTION	AMOUNT
		KANSAS MUNICIPAL INSURANCE TRUST	1/03/25	LEGAL	82.00
		LAW OFFICE OF MATTHEW METCALF	1/31/25	COURT APPOINTED ATTORNEY F	768.00
			1/31/25	COURT APPOINTED ATTORNEY F	312.00
			1/31/25	COURT APP ATTORNEY FEES	492.00
		PFALZGRAF LAW OFFICES	12/31/24	CITY V. TYLER RUSK 23MC652	996.00
		SOULE & GILES, LLC	1/31/25	JUDGE PAYMENT	2,060.00
		CITY OF WELLINGTON	1/02/25	FICA TRANSFER	256.41
			1/17/25	FICA TRANSFER	263.39
			1/31/25	FICA TRANSFER	297.73
			1/02/25	MEDICARE TRANSFER	59.97
			1/17/25	MEDICARE TRANSFER	61.61
			1/31/25	MEDICARE TRANSFER	69.64
		CITY OF WELLINGTON	1/02/25	KPERS INS CONTRIBUTION	43.43
			1/17/25	KPERS INS CONTRIBUTION	43.43
			1/31/25	KPERS INS CONTRIBUTION	43.52
			1/02/25	KPERS CONTRIBUTION	183.56
			1/17/25	KPERS CONTRIBUTION	183.56
			1/31/25	KPERS CONTRIBUTION	184.42
			1/02/25	KPERS T3 CONTRIBUTION	238.17
			1/17/25	KPERS T3 CONTRIBUTION	238.17
			1/31/25	KPERS T3 CONTRIBUTION	238.17
				TOTAL:	7,390.07
LAKE RECREATION	GENERAL FUND	A AND A AUTO SUPPLY	1/10/25	WIPER BLADES	41.18
			1/17/25	BATTERY FOR JD 5410 TRACTO	110.17
			1/31/25	REPLACEMENT FLINTS	2.99
		AMAZON CAPITAL SERVICES	1/24/25	BATTERIES FOR AED UNITS	29.98
			1/24/25	12 PAIR WORK GLOVES	16.20
		VISA	12/31/24	ALARM MONITORING	31.99
			12/31/24	FUEL PUMP	1,194.99
		CREATIVE SAFETY SUPPLY, LLC	12/31/24	REMOVING SALES TAX	97.85-
			12/31/24	LABEL SUPPLY FOR LAKE PERM	1,144.12
		ENTERPRISE FM TRUST-ENTERPRISE FLEET M	1/10/25	MAINTENANCE MANAGEMENT	24.00
		GOOGLE LLC	12/31/24	GOOGLE G	14.35
		HAMPEL OIL	12/31/24	151 GAL OFF RD DIESEL	395.03
			12/31/24	201 G UL 87 E10	499.58
		HAWKINS SERVICES LLC	12/31/24	ANNUAL MAINTENANCE	180.00
		KANOKLA NETWORKS	1/10/25	KANOKLA NETWORKS	47.41
			1/10/25	KANOKLA NETWORKS	47.41
		KANSAS MUNICIPAL INSURANCE TRUST	1/03/25	LAKE	2,925.00
		JOHN DEERE FINANCIAL	1/31/25	PIN	119.56
		SUNFLOWER CUSTOM T'S	12/31/24	POLO SHIRTS	81.38
		SUPPEVILLE FUEL LLC	1/22/25	300 GAL PROPANE	600.00
		MILL CREEK LUMBER OF KANSAS INC.	1/17/25	HOSE COUPLING	2.99
		TOUCHTONE COMMUNICATIONS	12/31/24	LONG DISTANCE	3.57
		CITY OF WELLINGTON	1/02/25	FICA TRANSFER	311.30
			1/17/25	FICA TRANSFER	312.53
			1/31/25	FICA TRANSFER	345.66
			1/02/25	MEDICARE TRANSFER	72.80
			1/17/25	MEDICARE TRANSFER	73.09
			1/31/25	MEDICARE TRANSFER	80.84
		CITY OF WELLINGTON	1/02/25	KPERS INS CONTRIBUTION	56.05
			1/17/25	KPERS INS CONTRIBUTION	56.25
			1/31/25	KPERS INS CONTRIBUTION	55.75
			1/02/25	KPERS CONTRIBUTION	207.39
			1/17/25	KPERS CONTRIBUTION	209.32

DEPARTMENT	FUND	VENDOR NAME	DATE	DESCRIPTION	AMOUNT
			1/31/25	KPERS CONTRIBUTION	205.93
			1/02/25	KPERS T2 CONTRIBUTION	174.68
			1/17/25	KPERS T2 CONTRIBUTION	174.68
			1/31/25	KPERS T2 CONTRIBUTION	173.23
			1/02/25	KPERS T3 CONTRIBUTION	162.20
			1/17/25	KPERS T3 CONTRIBUTION	162.20
			1/31/25	KPERS T3 CONTRIBUTION	162.20
		WELLS BUILT LLC	12/31/24	106.40 TON RIVER ROCK	<u>1,170.40</u>
				TOTAL:	11,580.55
NON-DEPARTMENTAL	GENERAL FUND	TYLER TECHNOLOGIES, INC.	12/31/24	A/R INSITE TRANSACTION FEE	12.50
			12/31/24	EASY PAY ONLINE TRANS FEES	37.50
			12/31/24	COURT INSITE TRANS FEES	<u>330.00</u>
				TOTAL:	380.00
FIRE	AMBULANCE & FF EQU	IMPACT BANK	1/24/25	LSE PMNT FORD E450 AMBULAN	3,121.28
			1/02/25	LSE PMNT FORD E450 AMBULAN	3,121.28
		RCB BANK	1/24/25	LSE PMNT FORD E450 AMBULAN	4,147.41
			1/02/25	LSE PMNT FORD E450 AMBULAN	<u>4,147.41</u>
				TOTAL:	14,537.38
NON-DEPARTMENTAL	LIBRARY	WELLINGTON LIBRARY BOARD	1/24/25	TAX DISTRIBUTION	<u>130,000.00</u>
				TOTAL:	130,000.00
GENERAL SERVICES	EMPLOYEE BENEFIT C	TEMPORARY VENDO MAX BARNES	12/31/24	MAX BARNES:	75.00
		FAMILY HEALTH AMERICA, L.C.	1/31/25	DECEMBER 2024 ADMIN FEE	100.00
		GRENE VISION GROUP LLC	12/31/24	EMPLOYEE EYECARE REIMB	10.00
			12/31/24	EMPLOYEE EYECARE REIMBURSE	50.00
			12/31/24	EMPLOYEE EYECARE REIMBURSE	25.00
			12/31/24	EMPLOYEE EYECARE REIMBURSE	75.00
			1/31/25	EMPLOYEE EYECARE REIMBURSE	10.00
			12/31/24	LORI HERNANDEZ	75.00
		NATIONAL UNION FIRE INSURANCE CO. OF V	1/24/25	GROUP BENEFIT FEE	<u>2,701.08</u>
				TOTAL:	3,121.08
NON-DEPARTMENTAL	SPECIAL LIABILITY	RENN & COMPANY, INC.	12/31/24	ADD ROTATING BEACON	<u>17.00</u>
				TOTAL:	17.00
NON-DEPARTMENTAL	FIRE INSURANCE PRO	TEMPORARY VENDO EMMA COOLEY	1/08/25	EARNED INTEREST	219.98
		EMMA COOLEY	1/08/25	FIRE INSURANCE PROCEEDS	<u>46,650.00</u>
				TOTAL:	46,869.98
HOSPITAL SALES TAX	HOSPITAL SALES TAX	SUMNER REGIONAL MEDICAL CENTER	1/31/25	HOSPITAL SALES/COMP USE TA	<u>137,816.39</u>
				TOTAL:	137,816.39
STREETS	SPECIAL CITY HIGHW	IMPACT BANK	1/24/25	LSE PMNT GLOBAL STREET SWE	4,310.74
			1/02/25	LSE PMNT GLOBAL STREET SWE	4,310.74
		RCB BANK	1/24/25	LSE PMNT WHEEL LOADER	<u>2,960.64</u>
				TOTAL:	11,582.12
PARKS	SPECIAL PARKS & RE	ATHCO	12/31/24	PLAYGROUND EQUIPMENT	8,432.50
		PARK WAREHOUSE LLC	1/22/25	PERMANENT PICNIC TABLES	<u>2,152.25</u>
				TOTAL:	10,584.75
NON-DEPARTMENTAL	TOURISM & CONVENTI	WELLINGTON AREA CHAMBER OF COMMERCE	1/31/25	2025 CONVENTION/TOURISM DU	<u>10,000.00</u>
				TOTAL:	10,000.00

DEPARTMENT	FUND	VENDOR NAME	DATE	DESCRIPTION	AMOUNT
GENERAL SERVICES	EQUIPMENT RESERVE	ENTERPRISE FM TRUST-ENTERPRISE FLEET M	1/10/25	BASE LEASE PROGRAM	<u>18,831.25</u>
				TOTAL:	18,831.25
FIRE	EQUIPMENT RESERVE	BANK OF COMMERCE	1/24/25	LSE PMNT AERIAL FIRE TRUCK	9,511.05
			1/02/25	LSE PMNT AERIAL FIRE TRUCK	9,511.05
		USBANCORP-GOVERNMENT LEASING AND FINAN	1/24/25	LSE PYMNT FIRE ENGINE/TEND	4,670.29
			1/02/25	LSE PMNT FIRE ENGINE/TENDR	<u>4,670.29</u>
				TOTAL:	28,362.68
GENERAL SERVICES	CAPITAL IMPROVEMEN	GRAVITY WORKS ARCHITECTURE	1/24/25	CONSTRUCTION OBSERVATION	<u>1,602.46</u>
				TOTAL:	1,602.46
PARKS	CAPITAL IMPROVEMEN	MARKSTAAR	1/31/25	ALUMINUM BLEACHERS	<u>4,309.51</u>
				TOTAL:	4,309.51
SWIMMING POOL	CAPITAL IMPROVEMEN	WATERS EDGE AQUATIC DESIGN LLC	12/31/24	AQUATIC CTR REPAIR	2,250.00
			1/17/25	AQUATIC CTR REPAIR	<u>7,750.00</u>
				TOTAL:	10,000.00
STREETS	CAPITAL IMPROVEMEN	PROFESSIONAL ENGINEERING	1/31/25	DESIGN ENGINEERING SRVS	9,200.00
			1/22/25	PLUM ST RECONSTRUCTION	<u>9,735.00</u>
				TOTAL:	18,935.00
CEMETERY	CAPITAL IMPROVEMEN	VISA	12/31/24	LED LIGHTING~MAUSOLEUM	530.91
		MID-WEST ELECTRIC SUPPLY, INC.	12/31/24	MATERIALS FOR MAUSOLEUM	<u>577.47</u>
				TOTAL:	1,108.38
CAPITAL IMPROVEMENTS	CAPITAL IMPROVEMEN	LOCHNER	12/31/24	REPLACE TAXIWAY GUIDANCE S	<u>3,958.00</u>
				TOTAL:	3,958.00
NON-DEPARTMENTAL	GOLF COURSE	AFLAC	1/17/25	AFLAC EMPLOYEE CONTRIB PRE	95.45
			1/17/25	AFLAC EMPLOYEE CONTRIB PRE	95.45
		JOHN HANCOCK LIFE INSURANCE COMPANY (U	1/02/25	RETIREMENT SAVINGS	60.00
			1/17/25	RETIREMENT SAVINGS	60.00
			1/31/25	RETIREMENT SAVINGS	60.00
			1/02/25	JOHN HANCOCK LOAN PMT	83.17
			1/17/25	JOHN HANCOCK LOAN PMT	83.17
			1/31/25	JOHN HANCOCK LOAN PMT	83.17
		US BANK	1/02/25	KPERS 457	50.00
			1/17/25	KPERS 457	50.00
			1/31/25	KPERS 457	50.00
		WELLINGTON RECREATION COMMISSION	1/17/25	EMPLOYEE CONTRIBUTIONS	19.50
			1/17/25	EMPLOYEE CONTRIBUTIONS	19.50
		CITY OF WELLINGTON	1/02/25	TRANSFER WITHHOLDING	650.52
			1/17/25	TRANSFER WITHHOLDING	632.91
			1/31/25	TRANSFER WITHHOLDING	665.97
			1/02/25	FICA TRANSFER	467.66
			1/17/25	FICA TRANSFER	457.23
			1/31/25	FICA TRANSFER	469.26
			1/02/25	MEDICARE TRANSFER	109.37
			1/17/25	MEDICARE TRANSFER	106.94
			1/31/25	MEDICARE TRANSFER	109.75
		CITY OF WELLINGTON	1/02/25	KPERS CONTRIBUTION	240.15
			1/17/25	KPERS CONTRIBUTION	240.15
			1/31/25	KPERS CONTRIBUTION	240.15
			1/02/25	KPERS T3 CONTRIBUTION	205.02

DEPARTMENT	FUND	VENDOR NAME	DATE	DESCRIPTION	AMOUNT
			1/17/25	KPERS T3 CONTRIBUTION	201.32
			1/31/25	KPERS T3 CONTRIBUTION	198.92
		CITY OF WELLINGTON	1/02/25	TRANSFER STATE WITHHOLDING	392.66
			1/17/25	TRANSFER STATE WITHHOLDING	383.67
			1/31/25	TRANSFER STATE WITHHOLDING	394.71
		MIDAMERICAN CREDIT UNION	1/02/25	HEALTH SAVINGS DEPOSITS	159.60
			1/17/25	HEALTH SAVINGS DEPOSITS	159.60
			1/31/25	HEALTH SAVINGS DEPOSITS	159.60
				TOTAL:	7,454.57
GOLF	GOLF COURSE	A AND A AUTO SUPPLY	1/24/25	AIR FILTERS, OIL FILTERS	355.97
			1/24/25	AIR FILTER	27.66
			1/24/25	AIR FILTERS	21.52
			1/31/25	AIR FILTERS	61.90
		VISA	12/31/24	SECURITY MONITORING	29.95
			12/31/24	INTERNET SERVICE	44.00
			12/31/24	WEBSITE DOMAIN	42.16
		GOOGLE LLC	12/31/24	GOOGLE G	7.18
		JESCO PRODUCTS, INC.	12/31/24	PAR AIDE HOLE CUTTER	340.33
		KANSAS GAS SERVICE	12/31/24	1112 W 4TH ST	425.04
			12/31/24	1400 W HARVEY	131.89
		KANSAS MUNICIPAL INSURANCE TRUST	1/03/25	GOLF	2,046.00
		R.K. BLACK INC.	1/31/25	JAN. BASE RATE CONTRACT	98.26
		AT&T	1/17/25	TELEPHONE BILL	343.89
		TRACTOR SUPPLY CREDIT PLAN	12/31/24	TIRE	99.99
		PROFESSIONAL TURF PRODUCTS, LP	1/31/25	ACME ADAPTER	5,493.64
		CITY OF WELLINGTON	1/02/25	FICA TRANSFER	467.66
			1/17/25	FICA TRANSFER	457.23
			1/31/25	FICA TRANSFER	469.26
			1/02/25	MEDICARE TRANSFER	109.37
			1/17/25	MEDICARE TRANSFER	106.94
			1/31/25	MEDICARE TRANSFER	109.75
		CITY OF WELLINGTON	1/02/25	KPERS INS CONTRIBUTION	74.20
			1/17/25	KPERS INS CONTRIBUTION	73.59
			1/31/25	KPERS INS CONTRIBUTION	73.19
			1/02/25	KPERS CONTRIBUTION	388.63
			1/17/25	KPERS CONTRIBUTION	388.63
			1/31/25	KPERS CONTRIBUTION	388.63
			1/02/25	KPERS T3 CONTRIBUTION	331.79
			1/17/25	KPERS T3 CONTRIBUTION	325.79
			1/31/25	KPERS T3 CONTRIBUTION	321.91
		WELLS FARGO VENDOR FINANCIAL SERVICES	1/24/25	CANNON PRINTER MONTHLY FEE	62.95
				TOTAL:	13,718.90
NON-DEPARTMENTAL	ELEC-WATER.-WWTP	AFLAC	1/17/25	AFLAC EMPLOYEE CONTRIB PRE	116.92
			1/17/25	AFLAC EMPLOYEE CONTRIB PRE	116.92
			1/17/25	AFLAC EMPLOYEE CONTRIB TAX	50.19
			1/17/25	AFLAC EMPLOYEE CONTRIB TAX	50.19
		AFLAC GROUP INSURANCE	1/17/25	AFLAC-CAIC GROUP TAXABLE	22.55
			1/17/25	AFLAC-CAIC GROUP TAXABLE	22.55
		JOHN HANCOCK LIFE INSURANCE COMPANY (U	1/02/25	RETIREMENT SAVINGS	86.00
			1/17/25	RETIREMENT SAVINGS	86.00
			1/31/25	RETIREMENT SAVINGS	86.00
			1/02/25	JOHN HANCOCK LOAN PMT	96.74
			1/17/25	JOHN HANCOCK LOAN PMT	96.74
			1/31/25	JOHN HANCOCK LOAN PMT	96.74

DEPARTMENT	FUND	VENDOR NAME	DATE	DESCRIPTION	AMOUNT
		GREG A. METZER	1/03/25	GRNSHMT-HEY CS-17-389	75.00
			1/17/25	GRNSHMT-HEY CS-17-389	75.00
			1/31/25	GRNSHMT-HEY CS-17-389	75.00
		PRE-PAID LEGAL SERVICES	1/17/25	EMPLOYEE CONTRIBUTIONS	13.95
			1/17/25	EMPLOYEE CONTRIBUTIONS	13.97
		US BANK	1/02/25	KPERS 457	330.00
			1/17/25	KPERS 457	330.00
			1/31/25	KPERS 457	330.00
		WELLINGTON RECREATION COMMISSION	1/17/25	EMPLOYEE CONTRIBUTIONS	85.38
			1/17/25	EMPLOYEE CONTRIBUTIONS	85.38
		CITY OF WELLINGTON	1/02/25	TRANSFER WITHHOLDING	4,004.84
			1/17/25	TRANSFER WITHHOLDING	4,958.02
			1/31/25	TRANSFER WITHHOLDING	5,204.18
			1/02/25	FICA TRANSFER	4,335.77
			1/17/25	FICA TRANSFER	4,887.92
			1/31/25	FICA TRANSFER	4,987.89
			1/02/25	MEDICARE TRANSFER	1,014.03
			1/17/25	MEDICARE TRANSFER	1,143.14
			1/31/25	MEDICARE TRANSFER	1,166.52
		CITY OF WELLINGTON	1/02/25	KPERS CONTRIBUTION	1,949.80
			1/17/25	KPERS CONTRIBUTION	2,192.87
			1/31/25	KPERS CONTRIBUTION	2,121.26
			1/02/25	KPERS T2 CONTRIBUTION	121.44
			1/17/25	KPERS T2 CONTRIBUTION	121.44
			1/31/25	KPERS T2 CONTRIBUTION	123.24
			1/02/25	KPERS T3 CONTRIBUTION	2,180.51
			1/17/25	KPERS T3 CONTRIBUTION	2,408.16
			1/31/25	KPERS T3 CONTRIBUTION	2,434.90
			1/17/25	OPTIONAL LIFE	110.29
			1/17/25	OPTIONAL LIFE	110.32
			1/17/25	OPTIONAL LIFE SPOUSE	12.27
			1/17/25	OPTIONAL LIFE SPOUSE	12.27
		CITY OF WELLINGTON	1/02/25	TRANSFER STATE WITHHOLDING	2,988.94
			1/17/25	TRANSFER STATE WITHHOLDING	3,478.54
			1/31/25	TRANSFER STATE WITHHOLDING	3,560.56
		CARL B. DAVIS, TRUSTEE	1/03/25	INC. W/H-ESTES-23-10755	853.00
			1/17/25	INC. W/H-ESTES-23-10755	853.00
				TOTAL:	59,676.34
ELECTRIC PRODUCTION	ELEC-WATER.-WWTP	AIRGAS USA, LLC	12/31/24	CYLINDER RENTAL, CARB. DIO	1,028.27
			12/31/24	HAZMAT	77.87
			1/17/25	CYLINDER LEASE	150.00
			1/17/25	HAZMAT	32.00
			1/17/25	HYDROGEN INDUSTRIAL SIZE	595.56
			1/17/25	ENERGY CHARGE	12.00
			1/17/25	DELIVERY FEE	75.00
			1/17/25	FUEL CHARGE	8.39
			1/17/25	HAZMAT	49.00
			1/31/25	INDUSTRIAL SIZE HYDROGEN	397.04
			1/31/25	ENERGY CHARGE	8.00
			1/31/25	DELIVERY FEE	75.00
			1/31/25	FUEL CHARGE	8.39
			1/31/25	HAZMAT CHARGE	46.50
		ALLIANCE BUSINESS SERVICES	1/17/25	IP GLEX SERVICES	104.72
		BLACK HILLS ENERGY	12/31/24	1064 GAL - GAS TURBINE	1,445.59
		VISA	12/31/24	BETTIS SERVICE KIT	383.00

DEPARTMENT	FUND	VENDOR NAME	DATE	DESCRIPTION	AMOUNT
			12/31/24	TAX	36.39
		ENTERPRISE FM TRUST-ENTERPRISE FLEET M	1/10/25	MAINTENANCE MANAGEMENT	12.00
		GAS TURBINE SYSTEMS SERVICES LLC	12/31/24	N2 SPEED PROBE FOR TURBINE	12,840.00
			12/31/24	SHIPPING	178.68
		GOOGLE LLC	12/31/24	GOOGLE G	14.35
		KANSAS GAS SERVICE	12/31/24	DEC GAS TRANSPORT	520.86
		KANSAS MUNICIPAL GAS AGENCY	12/31/24	GAS TURBINE	2,474.62
			12/31/24	STEAM TURBINE	400.32
			12/31/24	KMGA DUES	35.00
			12/31/24	OTHER CHARGES	0.06
		KANSAS MUNICIPAL INSURANCE TRUST	1/03/25	ELECTRIC PROD.	3,664.00
		KANSAS POWER POOL	12/31/24	ENERGY COST	540,453.95
		BRADY INDUSTRIES	1/31/25	DELIVERY CHARGE	4.00
		O'REILLY AUTOMOTIVE STORES, INC.	1/17/25	11 GAL ANTIFREEZE	164.89-
			1/17/25	6 GAL ANTIFREEZE	95.94
			1/17/25	TAX	6.55-
			1/31/25	12 X BRAKE CLEANER	41.88
			1/31/25	TAX	3.98
		SAFETY-KLEEN SYSTEMS, INC.	12/31/24	PARTS WASHER - SOLVENT	327.43
		AT&T	1/17/25	TELEPHONE BILL	224.78
		SUMNER COUNTY TREASURER	1/10/25	REGISTRATION RENEWALS	57.75
		SUMNER COWLEY ELECTRIC COOPERATIVE, IN	12/31/24	ELECTRIC BILL 12/01-1/01/2	127.84
		MILL CREEK LUMBER OF KANSAS INC.	1/31/25	FOAM & BUTTON PUSH	19.07
			1/31/25	FOAM TAPE	4.79
			1/17/25	4 X PLIER	56.96
			1/31/25	BLACK PIPE NIPPLE	13.16
		USA CONNECTIONS	1/02/25	FIBER SERVICES	71.11
			1/31/25	FIBER SERVICES	68.74
		VINCE ERWIN GLASS INC.	12/31/24	2 X GLASS PANES FOR WINDOW	30.00
		CITY OF WELLINGTON	1/02/25	FICA TRANSFER	1,158.52
			1/17/25	FICA TRANSFER	1,268.26
			1/31/25	FICA TRANSFER	1,274.55
			1/02/25	MEDICARE TRANSFER	270.94
			1/17/25	MEDICARE TRANSFER	296.60
			1/31/25	MEDICARE TRANSFER	298.07
		CITY OF WELLINGTON	1/02/25	KPERS INS CONTRIBUTION	196.56
			1/17/25	KPERS INS CONTRIBUTION	214.26
			1/31/25	KPERS INS CONTRIBUTION	205.57
			1/02/25	KPERS CONTRIBUTION	1,396.03
			1/17/25	KPERS CONTRIBUTION	1,564.30
			1/31/25	KPERS CONTRIBUTION	1,461.10
			1/02/25	KPERS T2 CONTRIBUTION	196.53
			1/17/25	KPERS T2 CONTRIBUTION	196.53
			1/31/25	KPERS T2 CONTRIBUTION	199.44
			1/02/25	KPERS T3 CONTRIBUTION	316.08
			1/17/25	KPERS T3 CONTRIBUTION	319.65
			1/31/25	KPERS T3 CONTRIBUTION	335.56
		UNIFIRST CORPORATION	1/17/25	UNIFIRST CORPORATION	50.40
			1/17/25	TAX	4.12
			1/17/25	UNIFIRST CORPORATION	50.40
			1/17/25	TAX	4.12
			1/31/25	UNIFIRST CORPORATION	50.40
			1/31/25	TAX	4.12
			1/31/25	UNIFIRST CORPORATION	50.40
			1/31/25	TAX	4.12
				TOTAL:	577,489.18

DEPARTMENT	FUND	VENDOR NAME	DATE	DESCRIPTION	AMOUNT
ELECTRIC DISTRIBUTION	ELEC-WATER.-WWTP	A AND A AUTO SUPPLY	1/17/25	AMBER LIGHTS	31.99
			1/17/25	LOOM, WIRE, FUSE HOLDER	89.25
			1/17/25	TAX	6.25
			1/17/25	LOOM, WIRE	22.38
		ALLIANCE BUSINESS SERVICES	1/17/25	IP GLEX SERVICES	104.72
		ALTEC INDUSTRIES, INC.	1/31/25	REPAIR OF PTO ON TRK 18	763.50
			1/31/25	TAX	72.53
		VISA	12/31/24	PRIMARY WIRE/BATTERY CABLE	182.72
			12/31/24	ELECTRO CONTROLLER	39.59
			12/31/24	CFL LIGHT BULB	18.03
			12/31/24	ALUM FLAT CUSTOM CUT	244.31
			12/31/24	SHIPPING	28.48
			12/31/24	TOOL APRON	179.99
			12/31/24	SHIPPING	9.13
			12/31/24	TAX	17.10
			12/31/24	CORRECTION TAPE,FOLDER,BIN	35.78
			12/31/24	TAX	3.40
			12/31/24	AP22 TIME BASED SWITCH	254.00
			12/31/24	TAX	21.76
		ENTERPRISE FM TRUST-ENTERPRISE FLEET M	1/10/25	MAINTENANCE MANAGEMENT	52.75
		GADES SALES COMPANY, INC.	1/31/25	CARD RACK TWO CHANNEL DETE	145.00
		GOOGLE LLC	12/31/24	GOOGLE G	57.37
		KANSAS GAS SERVICE	12/31/24	504 S BLAINE	1,005.40
		KANSAS MUNICIPAL INSURANCE TRUST	1/03/25	ELECTRIC DIST	3,051.00
		KANSAS MUNICIPAL UTILITIES	1/10/25	KMU LINeworker APPRENTICES	300.00
			1/10/25	CONNER DIRKING	300.00
			1/10/25	TY CARTER	300.00
			1/10/25	JAYDEN MILLER	300.00
			1/10/25	CASEY HINTON	300.00
			1/10/25	BRANT SIPE	300.00
			1/10/25	TATUM LEE	300.00
			12/31/24	LINeworker MATERIALS-LEV 2	150.00
		KANSAS ONE-CALL SYSTEM, INC	12/31/24	22 LOCATES	26.40
		KELLY COMPLIANCE	12/31/24	KELLY COMPLIANCE	50.25
		BORDER STATES INDUSTRIES, INC.	1/31/25	40 X WEDGE CLAMP	126.00
			1/31/25	2 X METER CANS	218.48
			1/31/25	10 X CODING TAPE	70.80
			1/31/25	10 X RED CODING TAPE	67.30
			1/31/25	TAX	45.84
			1/31/25	PVC PIPE/TAX PAID	366.95
			1/31/25	M18 6T CRIMPER KIT	2,279.50
			1/31/25	TAX	216.56
			1/31/25	100 DEADEND SERVICE WEDGE	582.00
			1/31/25	TAX	55.29
			1/31/25	25 219 ALCU SECONDARY SLEE	25.50
			1/31/25	TAX	2.43
		NORTHERN SAFETY CO., INC.	1/31/25	10 X SAFETY GLASSES/TAX PD	44.90
			1/31/25	15 X CLEAR SAFETY GLASSES	48.45
			1/31/25	TAX	8.87
		O'REILLY AUTOMOTIVE STORES, INC.	1/17/25	WIPER FLUID	20.97
			1/17/25	TAX	1.99
			1/17/25	CONDUIT	15.98
			1/17/25	TAX	1.52
			1/17/25	4 X COPPER LUGS	23.96
			1/17/25	TAX	2.28
			1/17/25	HEAT SHRINK, CONDUIT	24.47

DEPARTMENT	FUND	VENDOR NAME	DATE	DESCRIPTION	AMOUNT
			1/17/25	TAX	2.32
		SUMNER COUNTY TREASURER	1/10/25	REGISTRATION RENEWALS	460.50
		MILL CREEK LUMBER OF KANSAS INC.	1/17/25	WEATHERSEAL 17' BROWN	13.99
			1/17/25	RUBBER STRIP	12.98
			1/17/25	FASTENER	0.54
			1/17/25	SEALANT	17.98
			1/31/25	4 X FASTENERS	3.94
		TRACTOR SUPPLY CREDIT PLAN	12/31/24	SHOP SUPPLIES	18.98
			12/31/24	SPOOLRUNNER	289.99
			12/31/24	TRUFUEL	49.98
			1/09/25	2 X SAFE T SORB OIL DRY	16.98
		USA CONNECTIONS	1/02/25	FIBER SERVICES	71.15
			1/31/25	FIBER SERVICES	68.73
		VERIZON WIRELESS	12/31/24	CITY TABLETS	40.04
			12/31/24	620-440-7676 TRK #36	40.01
			12/31/24	620-440-7562 TRK#16	40.01
			12/31/24	620-440-2396 TRK#30	40.01
			12/31/24	620-440-0003 JETPAK	40.01
		CITY OF WELLINGTON	1/02/25	FICA TRANSFER	1,094.58
			1/17/25	FICA TRANSFER	1,369.13
			1/31/25	FICA TRANSFER	1,122.10
			1/02/25	MEDICARE TRANSFER	255.99
			1/17/25	MEDICARE TRANSFER	320.20
			1/31/25	MEDICARE TRANSFER	262.43
		CITY OF WELLINGTON	1/02/25	KPERS RETIREE-EMPL CONTRI	240.24
			1/17/25	KPERS RETIREE-EMPL CONTRI	343.22
			1/31/25	KPERS RETIREE-EMPL CONTRI	238.79
			1/02/25	KPERS INS CONTRIBUTION	156.33
			1/17/25	KPERS INS CONTRIBUTION	190.00
			1/31/25	KPERS INS CONTRIBUTION	156.39
			1/02/25	KPERS CONTRIBUTION	293.20
			1/17/25	KPERS CONTRIBUTION	374.93
			1/31/25	KPERS CONTRIBUTION	299.66
			1/02/25	KPERS T3 CONTRIBUTION	1,224.65
			1/17/25	KPERS T3 CONTRIBUTION	1,469.98
			1/31/25	KPERS T3 CONTRIBUTION	1,218.89
		WESCO RECEIVABLES CORP	1/31/25	#2 TRI OVERHEAD - TAX PD	3,024.00
			1/31/25	TAX	287.28
				TOTAL:	28,183.25
WATER PRODUCTION	ELEC-WATER.-WWTP	AMAZON CAPITAL SERVICES	1/24/25	2 X MIGHTY MAX BATTERY	55.34
		CLARKE WELL & EQUIPMENT, INC.	12/31/24	PULLED PUMP	2,385.00
			12/31/24	SHIP REPAIR OF PUMP	1,380.00
			12/31/24	ON SITE WORK PERFORMED	2,830.00
			12/31/24	MOTOR REPAIR	1,966.00
			12/31/24	PUMP MATERIAL	11,415.00
		VISA	12/31/24	TONER CARTRIDGE	47.98
			12/31/24	TAX	4.56
		ENTERPRISE FM TRUST-ENTERPRISE FLEET M	1/10/25	MAINTENANCE MANAGEMENT	12.00
		GOOGLE LLC	12/31/24	GOOGLE G	43.03
		GRAINGER INDUSTRIAL SUPPLY	1/17/25	ELECTRIC HEATER	584.72
			1/17/25	HEATER THERMOSTAT	77.34
		HACH COMPANY	1/31/25	SAMPLE VIALS	169.70
			1/31/25	FREIGHT	15.05
		HAMPEL OIL	1/17/25	623 GAL OFF ROAD DIESEL	2,209.22
			1/17/25	623 GAL OFF RD DIESEL	2,209.22-

DEPARTMENT	FUND	VENDOR NAME	DATE	DESCRIPTION	AMOUNT
			1/17/25	623 GAL OFF RD DIESEL	1,788.01
			1/17/25	KS ENVIRONMENTAL FEE	6.23
			1/17/25	SUPERFUND EXCISE TAX	2.49
			1/17/25	FEDERAL OIL SPILL LIABILIT	1.31
		KANOKLA NETWORKS	1/10/25	KANOKLA NETWORKS	51.87
		KANSAS MUNICIPAL INSURANCE TRUST	1/03/25	ELECTRIC DIST	4,324.00
		O'REILLY AUTOMOTIVE STORES, INC.	12/31/24	2 X WIPER BLADES	40.78
			1/17/25	ALL PURPOSE, HAND CLEANER	12.48
		MILL CREEK LUMBER OF KANSAS INC.	1/31/25	MISC PIPE FITTINGS/SUPPLIE	78.34
			1/31/25	PARTS FOR CHLORINE SYSTEMS	52.09
		TOUCHTONE COMMUNICATIONS	12/31/24	LONG DISTANCE	4.10
		USA BLUEBOOK	1/31/25	MISC CHEMICALS/SUPPLIES	389.42
			1/31/25	FREIGHT	37.05
			1/31/25	REAGENT AMMONIA MONOCHLORA	118.18
		CITY OF WELLINGTON	1/02/25	FICA TRANSFER	592.42
			1/17/25	FICA TRANSFER	690.94
			1/31/25	FICA TRANSFER	735.18
			1/02/25	MEDICARE TRANSFER	138.56
			1/17/25	MEDICARE TRANSFER	161.59
			1/31/25	MEDICARE TRANSFER	171.94
		CITY OF WELLINGTON	1/02/25	KPERS INS CONTRIBUTION	100.57
			1/17/25	KPERS INS CONTRIBUTION	116.46
			1/31/25	KPERS INS CONTRIBUTION	118.58
			1/02/25	KPERS CONTRIBUTION	458.58
			1/17/25	KPERS CONTRIBUTION	573.90
			1/31/25	KPERS CONTRIBUTION	623.10
			1/02/25	KPERS T3 CONTRIBUTION	517.91
			1/17/25	KPERS T3 CONTRIBUTION	556.90
			1/31/25	KPERS T3 CONTRIBUTION	528.28
				TOTAL:	33,976.98
WATER DISTRIBUTION	ELEC-WATER.-WWTP	ALLIANCE BUSINESS SERVICES	1/17/25	IP GLEX SERVICES	52.34
		AMAZON CAPITAL SERVICES	1/17/25	DYMO LABELS	15.99
		CHEW PLUMBING & HEATING, INC.	1/17/25	PVC PIPE	8.88
		VISA	12/31/24	MEAL	35.41
			12/31/24	5 X ANGLE STOP BALL METER	484.35
			12/31/24	SIGNS FOR OFFICE DOORS	136.00
			12/31/24	SHIPPING	9.99
			12/31/24	TAX	12.92
		ENTERPRISE FM TRUST-ENTERPRISE FLEET M	1/10/25	MAINTENANCE MANAGEMENT	18.00
		FOLEY INDUSTRIES, INC.	12/31/24	TROUBLESHOOT HYDRAULIC HOS	972.12
		GOOGLE LLC	12/31/24	GOOGLE G	21.52
		GRAINGER INDUSTRIAL SUPPLY	12/31/24	20 X BARKER BALL	368.60
		HACH COMPANY	1/31/25	CHLORINE	171.54
			1/31/25	FREIGHT	15.05
		KANSAS GAS SERVICE	12/31/24	624 W 2ND	520.41
		KANSAS MUNICIPAL INSURANCE TRUST	1/03/25	WATER DIST	4,830.00
		KANSAS ONE-CALL SYSTEM, INC	12/31/24	65 LOCATES	78.00
		MOUNTAINLAND SUPPLY COMPANY	12/31/24	FIRE HYDRANT	2,820.00
			12/31/24	PJ ADAPTER	434.79
			12/31/24	2 X BAND CLAMPS	367.04
			12/31/24	2 X BAND CLAMPS	169.39
			12/31/24	40 FT PVC PIPE	178.77
			12/31/24	50 20" METER PIT	1,937.50
			12/31/24	4 X FIRE HYDRANT	11,280.00
			1/31/25	50 NICOR POLY LID	1,675.00

DEPARTMENT	FUND	VENDOR NAME	DATE	DESCRIPTION	AMOUNT
			1/31/25	SHIPPING	434.70
		O'REILLY AUTOMOTIVE STORES, INC.	1/31/25	12 X BRAKE CLEANER	41.88
		SALINA SUPPLY COMPANY	1/31/25	MIP X CTS SOMP/BEND COUPLI	525.39
			1/31/25	METER STOP,METER SWIVEL	1,973.55
			1/31/25	DELIVERY FEE	10.00
		SUMNER COUNTY TREASURER	1/10/25	REGISTRATION RENEWALS	642.25
		MILL CREEK LUMBER OF KANSAS INC.	1/17/25	KWIKSET KEYBLANK	2.49
			1/17/25	TAPE MEASURE, RECIP BLADE	55.95
			1/31/25	GRAVEL MIX/STEPPING STONES	92.55
			1/31/25	MATERIAL TO WIRE IN OUTLET	26.06
			1/31/25	MATERIAL TO HOOK UP FREEZE	15.56
		TRACTOR SUPPLY CREDIT PLAN	12/31/24	MISC SUPPLIES	35.55
			12/31/24	MISC BOLTS	33.97
			12/31/24	TSC BRITE CHEST	329.99
			12/31/24	2 HOPKINS LED OVAL LIGHT	69.98
			12/31/24	1 GAL CLR	63.98
		USA CONNECTIONS	1/02/25	FIBER SERVICES	71.14
			1/31/25	FIBER SERVICES	68.73
		VERIZON WIRELESS	12/31/24	620-359-2643 TABLET	40.01
			12/31/24	620-359-2641 TABLET	40.01
		CITY OF WELLINGTON	1/02/25	FICA TRANSFER	546.32
			1/17/25	FICA TRANSFER	614.70
			1/31/25	FICA TRANSFER	830.29
			1/02/25	MEDICARE TRANSFER	127.78
			1/17/25	MEDICARE TRANSFER	143.76
			1/31/25	MEDICARE TRANSFER	194.18
		CITY OF WELLINGTON	1/02/25	KPERS INS CONTRIBUTION	92.66
			1/17/25	KPERS INS CONTRIBUTION	103.69
			1/31/25	KPERS INS CONTRIBUTION	133.91
			1/02/25	KPERS T3 CONTRIBUTION	899.72
			1/17/25	KPERS T3 CONTRIBUTION	1,006.82
			1/31/25	KPERS T3 CONTRIBUTION	1,300.33
		UNIFIRST CORPORATION	1/17/25	UNIFIRST CORPORATION	25.83
			1/17/25	UNIFIRST CORPORATION	67.39
			1/31/25	UNIFIRST CORPORATION	25.83
			1/31/25	UNIFIRST CORPORATION	25.83
		ZENNER USA, INC.	1/17/25	STEALTH METER	9,805.40
				TOTAL:	47,131.79
WASTEWATER TREATMENT	ELEC-WATER.-WWTP	A AND A AUTO SUPPLY	1/10/25	OIL GUN	17.41
		ENTERPRISE FM TRUST-ENTERPRISE FLEET M	1/10/25	MAINTENANCE MANAGEMENT	18.00
		GOOGLE LLC	12/31/24	GOOGLE G	21.51
		KANSAS GAS SERVICE	12/31/24	1500 E BOTKIN ST	1,076.49
			12/31/24	OLD WWTP	182.66
		KANSAS MUNICIPAL INSURANCE TRUST	1/03/25	SEWAGE TREATMENT	3,395.00
		KELLY COMPLIANCE	12/31/24	KELLY COMPLIANCE	99.25
		MERIDIAN ANALYTICAL LABS, LLC	12/31/24	WASTEWATER	718.50
			12/31/24	ELK	233.00
			1/31/25	ELK	233.00
			1/31/25	WASTEWATER	628.50
			1/31/25	ELK	233.00
		O'REILLY AUTOMOTIVE STORES, INC.	1/31/25	MISC SUPPLIES	30.47
			1/31/25	TAX	2.89
		AT&T	1/17/25	TELEPHONE BILL	24.18
		MILL CREEK LUMBER OF KANSAS INC.	12/31/24	PVC THRD COUPLING 1/2 FIP	1.99
			1/17/25	HAND HELD SPREADER, ICE ME	95.96

DEPARTMENT	FUND	VENDOR NAME	DATE	DESCRIPTION	AMOUNT
			1/31/25	U BOLT	2.79
			1/31/25	FASTENER	0.34
		TRACTOR SUPPLY CREDIT PLAN	12/31/24	BLOW GUN KIT & SUPPLIES	18.98
			12/31/24	GAL SIMPLE GREEN	17.98
			1/09/25	SS ROCK SALT	15.98
			1/09/25	RAIN X DEICER	6.49
		USA BLUEBOOK	1/31/25	LIQUI-NON CLEANING CMPD	78.25
			1/31/25	PH BUFFER PACK	136.35
			1/31/25	FREIGHT	38.78
			1/31/25	2 X POLYMER CLEANER	93.80
			1/31/25	FREIGHT	21.84
			1/31/25	SDS BINDER RINGS	48.95
			1/31/25	FREIGHT	21.94
		USA CONNECTIONS	12/31/24	PHONE NUMBER PORTING FEE	18.00
			12/31/24	PHONE BUSINESS UNLIMITED	33.82
			12/31/24	PHONE BUSINESS UNLIMITED	34.95
			1/02/25	INTERNET SERVICES	48.75
			1/31/25	INTERNET SERVICE	46.07
		VERIZON WIRELESS	12/31/24	620-440-0288 OFF SITE LIFT	40.01
			12/31/24	620-440-0504 TABLET	40.01
		CITY OF WELLINGTON	1/02/25	FICA TRANSFER	605.76
			1/17/25	FICA TRANSFER	606.72
			1/31/25	FICA TRANSFER	650.19
			1/02/25	MEDICARE TRANSFER	141.67
			1/17/25	MEDICARE TRANSFER	141.90
			1/31/25	MEDICARE TRANSFER	152.06
		CITY OF WELLINGTON	1/02/25	KPERS INS CONTRIBUTION	104.98
			1/17/25	KPERS INS CONTRIBUTION	105.14
			1/31/25	KPERS INS CONTRIBUTION	104.88
			1/02/25	KPERS CONTRIBUTION	448.97
			1/17/25	KPERS CONTRIBUTION	477.01
			1/31/25	KPERS CONTRIBUTION	460.86
			1/02/25	KPERS T3 CONTRIBUTION	570.37
			1/17/25	KPERS T3 CONTRIBUTION	543.87
			1/31/25	KPERS T3 CONTRIBUTION	557.41
		UNIFIRST CORPORATION	1/17/25	UNIFIRST CORPORATION	24.31
			1/17/25	UNIFIRST CORPORATION	24.31
			1/31/25	UNIFIRST CORPORATION	24.31
			1/31/25	UNIFIRST CORPORATION	24.31
		WICHITA WINSUPPLY	12/31/24	1 PVC 80 ADPT	5.84
			12/31/24	3 PVC 90 ELL	9.39
			12/31/24	1 BLUE PVC CEMENT	15.58
			12/31/24	1 X 3/4 FIP BOILER DRAIN	11.27
				TOTAL:	13,587.00
NON-DEPARTMENTAL ELECT	ELEC-WATER.-WWTP	TEMPORARY VENDO SHINE SOLAR, LLC	1/24/25	REFUND/OVERPAYMENT FOR FEE	50.00
		HAMPEL OIL	1/31/25	2700 GAL UNLEADED	6,696.00
			1/31/25	1700 GAL DIESEL	4,845.00
				TOTAL:	11,591.00
NON-DEPARTMENTAL	ELEC-WATER.-WWTP	VISA	12/31/24	MEAL	11.28
			12/31/24	RESERVED ROOM	50.00
		ENTERPRISE FM TRUST-ENTERPRISE FLEET M	1/10/25	MAINTENANCE MANAGEMENT	24.00
		GOOGLE LLC	12/31/24	GOOGLE G	14.34
		TYLER TECHNOLOGIES, INC.	12/31/24	CC CHARGEBACK ACTIVITY	30.00
			12/31/24	ECHECK RETURN	20.00

DEPARTMENT	FUND	VENDOR NAME	DATE	DESCRIPTION	AMOUNT
			12/31/24	ECHECK RETURN	30.00
			12/31/24	ECHECK RETURN	5.00
		KANSAS ASSOCIATION OF CITY/COUNTY MGMT	1/24/25	2025 AFFILIATE KACM MEMBER	75.00
		KANSAS DEPT OF HEALTH & ENVIRONMENT	1/31/25	PRINCIPAL	10,751.28
			1/31/25	INTEREST	832.93
			1/31/25	SERVICE FEE	2,284.60
		KANSAS DEPT OF REVENUE	12/31/24	CLEAN WATER DRINKING FEE	518.20
		KANSAS MUNICIPAL UTILITIES	1/17/25	2025 QUARTERLY DUES	4,226.26
		SUMNER COUNTY ECONOMIC	1/10/25	2025 YEARLY BILLING	43,260.00
		VERIZON WIRELESS	12/31/24	620-440-0063 MIFI	40.01
			12/31/24	JETPAK 316-652-5161	40.03
		CITY OF WELLINGTON	1/02/25	FICA TRANSFER	338.16
			1/17/25	FICA TRANSFER	338.16
			1/31/25	FICA TRANSFER	375.58
			1/02/25	MEDICARE TRANSFER	79.09
			1/17/25	MEDICARE TRANSFER	79.09
			1/31/25	MEDICARE TRANSFER	87.84
		CITY OF WELLINGTON	1/02/25	KPERS INS CONTRIBUTION	57.53
			1/17/25	KPERS INS CONTRIBUTION	57.53
			1/31/25	KPERS INS CONTRIBUTION	60.58
			1/02/25	KPERS CONTRIBUTION	558.63
			1/17/25	KPERS CONTRIBUTION	558.63
			1/31/25	KPERS CONTRIBUTION	588.20
				TOTAL:	65,391.95
CAPITAL IMPROVEMENTS	MULTI-YR CPTL. IMP	ENTERPRISE FM TRUST-ENTERPRISE FLEET M	1/10/25	BASE LEASE PROGRAM	12,859.17
				TOTAL:	12,859.17
ELECTRIC DISTRIBUTION	MULTI-YR CPTL. IMP	RCB BANK	1/24/25	LEASE PAYMENT ON BUCKET TR	4,458.01
			1/02/25	LSE PMNT BUCKET TRUCK	4,458.01
				TOTAL:	8,916.02
WATER DISTRIBUTION	MULTI-YR CPTL. IMP	PROFESSIONAL ENGINEERING	12/31/24	WATER VALVE REPLACEMENT	990.00
				TOTAL:	990.00
NON-DEPARTMENTAL	SANITATION LANDFIL	KANSAS PAYMENT CENTER	1/02/25	CHILD SUPPORT	394.62
			1/17/25	CHILD SUPPORT	394.62
			1/31/25	CHILD SUPPORT	394.62
		CITY OF WELLINGTON	1/02/25	TRANSFER WITHHOLDING	1,204.65
			1/17/25	TRANSFER WITHHOLDING	1,160.21
			1/31/25	TRANSFER WITHHOLDING	1,075.59
			1/02/25	FICA TRANSFER	1,195.84
			1/17/25	FICA TRANSFER	1,166.78
			1/31/25	FICA TRANSFER	1,127.37
			1/02/25	MEDICARE TRANSFER	279.66
			1/17/25	MEDICARE TRANSFER	272.88
			1/31/25	MEDICARE TRANSFER	263.66
		CITY OF WELLINGTON	1/02/25	KPERS CONTRIBUTION	91.87
			1/17/25	KPERS CONTRIBUTION	77.51
			1/31/25	KPERS CONTRIBUTION	81.87
			1/02/25	KPERS T3 CONTRIBUTION	1,086.61
			1/17/25	KPERS T3 CONTRIBUTION	1,080.65
			1/31/25	KPERS T3 CONTRIBUTION	1,014.23
			1/17/25	OPTIONAL LIFE	2.10
			1/17/25	OPTIONAL LIFE	2.10
		CITY OF WELLINGTON	1/02/25	TRANSFER STATE WITHHOLDING	871.96

DEPARTMENT	FUND	VENDOR NAME	DATE	DESCRIPTION	AMOUNT
			1/17/25	TRANSFER STATE WITHHOLDING	847.44
			1/31/25	TRANSFER STATE WITHHOLDING	<u>819.49</u>
				TOTAL:	14,906.33
SANITATION COLLECTION	SANITATION LANDFIL	AAA PORTABLE SERVICES, LLC	1/17/25	RENTAL CHARGE	143.75
			12/31/24	RENTAL CHARGE	97.61
		AMAZON CAPITAL SERVICES	1/10/25	NEW TIRES FOR GOLF CART	174.95
			1/17/25	WALL CALENDAR	13.56
		ARC PHYSICAL THERAPY	12/31/24	EMPLOYEE DRUG SCREEN	35.00
		ASCENSION MEDICAL GROUP VIA CHRISTI, P	12/31/24	SANITATION EMPLOYEE PHYSIC	100.00
		VISA	12/31/24	KDOR WICHITA~CDL EXAM	42.03
			12/31/24	KDOR WICHITA~CDL	10.75
		ENTERPRISE FM TRUST-ENTERPRISE FLEET M	1/10/25	MAINTENANCE MANAGEMENT	12.00
		4 STATE MAINTENANCE SUPPLY, INC.	1/31/25	POP UP WIPES	85.53
		GOOGLE LLC	12/31/24	GOOGLE G	14.34
		KANSAS MUNICIPAL INSURANCE TRUST	1/03/25	SANITATION	14,976.00
		KELLY COMPLIANCE	12/31/24	KELLY COMPLIANCE	99.25
		MID KANSAS COOPERATIVE ASSOCIATION	1/17/25	PROPANE BOTTLE FILL	24.02-
			1/17/25	PROPANE BOTTLE FILL	37.25
		O'REILLY AUTOMOTIVE STORES, INC.	1/31/25	MINI BULBS	13.20
			1/31/25	M/R TRUCK #110	209.95
		SOUTH HAVEN LP GAS, INC.	1/10/25	278.6 GAL PROPANE	487.55
			1/31/25	200 GAL PROPANE	370.00
		AT&T	1/17/25	TELEPHONE BILL	112.38
		TRACTOR SUPPLY CREDIT PLAN	12/31/24	MISC SUPPLIES	381.77
		USA CONNECTIONS	1/02/25	INTERNET SERVICE	26.00
			1/31/25	INTERNET SERVICE	26.00
		CITY OF WELLINGTON	1/02/25	FICA TRANSFER	778.27
			1/17/25	FICA TRANSFER	753.37
			1/31/25	FICA TRANSFER	695.76
			1/02/25	MEDICARE TRANSFER	182.01
			1/17/25	MEDICARE TRANSFER	176.19
			1/31/25	MEDICARE TRANSFER	162.72
		CITY OF WELLINGTON	1/02/25	KPERS INS CONTRIBUTION	126.52
			1/17/25	KPERS INS CONTRIBUTION	123.82
			1/31/25	KPERS INS CONTRIBUTION	113.07
			1/02/25	KPERS CONTRIBUTION	148.68
			1/17/25	KPERS CONTRIBUTION	125.43
			1/31/25	KPERS CONTRIBUTION	132.50
			1/02/25	KPERS T3 CONTRIBUTION	1,079.91
			1/17/25	KPERS T3 CONTRIBUTION	1,076.85
			1/31/25	KPERS T3 CONTRIBUTION	965.37
		UNIFIRST CORPORATION	1/17/25	UNIFIRST CORPORATION	27.99
			1/17/25	UNIFIRST CORPORATION	22.74
			1/15/25	UNIFIRST CORPORATION	22.74
			1/31/25	UNIFIRST CORPORATION	21.17
		WORKSTEPS, INC	12/31/24	EMPLOYEE FUNCTIONAL TEST	<u>75.00</u>
				TOTAL:	24,254.96
TRANSFER STATION	SANITATION LANDFIL	BOBBY D. COOK	12/31/24	RECYCLE TIRES	418.00
		FOLEY INDUSTRIES, INC.	12/31/24	DOZER SERVICE	732.31
		GOOGLE LLC	12/31/24	GOOGLE G	14.34
		HAMPEL OIL	12/31/24	319 G OFF RD DIESEL	834.54
		HUMMINGBIRD PRINTING	12/31/24	SCALE WEIGHT TICKETS	980.00
		SW MGMT FUND-KDHE	12/31/24	SW MGMT FUND-KDHE	315.31
		KANSAS MUNICIPAL INSURANCE TRUST	1/03/25	TRANSFER STATION	4,930.00

DEPARTMENT	FUND	VENDOR NAME	DATE	DESCRIPTION	AMOUNT
		O'REILLY AUTOMOTIVE STORES, INC.	1/17/25	DIESEL TREATMENT	35.97
			1/17/25	DE-GEL TREATMENT	14.99
			1/31/25	DIESEL TREATMENT	31.98
			1/31/25	DE-GEL TREATMENT	44.97
		PLUMB THICKET LANDFILL	12/31/24	1570.64 TONS HOUSEHOLD TRA	42,674.41
		PYE BARKER FIRE & SAFETY, LLC	1/31/25	FIRE SUPPRESSION SYSTEM IN	318.00
		MILL CREEK LUMBER OF KANSAS INC.	1/17/25	ENTRY DOOR LEVER	41.99
		TOUCHTONE COMMUNICATIONS	1/10/25	AIRDIAL EQUIPMENT RENTAL/L	72.83
		TRACTOR SUPPLY CREDIT PLAN	12/31/24	DOOR LATCH ASSEMBLY	16.36
		CITY OF WELLINGTON	1/02/25	FICA TRANSFER	417.57
			1/17/25	FICA TRANSFER	413.41
			1/31/25	FICA TRANSFER	431.61
			1/02/25	MEDICARE TRANSFER	97.65
			1/17/25	MEDICARE TRANSFER	96.69
			1/31/25	MEDICARE TRANSFER	100.94
		CITY OF WELLINGTON	1/02/25	KPERS INS CONTRIBUTION	69.88
			1/17/25	KPERS INS CONTRIBUTION	69.21
			1/31/25	KPERS INS CONTRIBUTION	69.61
			1/02/25	KPERS T3 CONTRIBUTION	678.57
			1/17/25	KPERS T3 CONTRIBUTION	672.05
			1/31/25	KPERS T3 CONTRIBUTION	675.97
		UNIFIRST CORPORATION	1/17/25	UNIFIRST CORPORATION	19.89
			1/17/25	UNIFIRST CORPORATION	19.89
			1/15/25	UNIFIRST CORPORATION	19.89
			1/31/25	UNIFIRST CORPORATION	19.89
				TOTAL:	55,348.72
SANITATION COLLECTION	SANITATION EQUIP.	IMPACT BANK	1/02/25	LSE PMNT REFUESE TRUCK	2,430.56
		RCB BANK	1/24/25	LSE PMNT SANITATION TRUCK	1,883.22
			1/02/25	LSE PMNT SANITATION TRUCK	1,883.22
				TOTAL:	6,197.00
NON-DEPARTMENTAL	WELLINGTON MUNIC.A	AFLAC	1/17/25	AFLAC EMPLOYEE CONTRIB PRE	15.47
			1/17/25	AFLAC EMPLOYEE CONTRIB PRE	15.47
		CITY OF WELLINGTON	1/02/25	TRANSFER WITHHOLDING	238.82
			1/17/25	TRANSFER WITHHOLDING	238.82
			1/31/25	TRANSFER WITHHOLDING	253.30
			1/02/25	FICA TRANSFER	144.13
			1/17/25	FICA TRANSFER	144.13
			1/31/25	FICA TRANSFER	148.20
			1/02/25	MEDICARE TRANSFER	33.71
			1/17/25	MEDICARE TRANSFER	33.71
			1/31/25	MEDICARE TRANSFER	34.66
		CITY OF WELLINGTON	1/02/25	KPERS T2 CONTRIBUTION	143.42
			1/17/25	KPERS T2 CONTRIBUTION	143.42
			1/31/25	KPERS T2 CONTRIBUTION	143.42
		CITY OF WELLINGTON	1/02/25	TRANSFER STATE WITHHOLDING	118.61
			1/17/25	TRANSFER STATE WITHHOLDING	118.61
			1/31/25	TRANSFER STATE WITHHOLDING	122.29
				TOTAL:	2,090.19
WELLINGTON AIRPORT	WELLINGTON MUNIC.A	VISA	12/31/24	AWOS	16.86
		ENTERPRISE FM TRUST-ENTERPRISE FLEET M	1/10/25	MAINTENANCE MANAGEMENT	12.00
		GOOGLE LLC	12/31/24	GOOGLE G	7.17
		JERRY MILLER ELECTRONICS	1/03/25	ANNUAL AWOS MAINTENANCE	6,250.00
		KANSAS MUNICIPAL INSURANCE TRUST	1/03/25	AIRPORT MANAGER	1,001.00

DEPARTMENT	FUND	VENDOR NAME	DATE	DESCRIPTION	AMOUNT
		MID KANSAS COOPERATIVE ASSOCIATION	1/17/25	FUEL PURCHASE	75.39
		AT&T	1/17/25	POTS TELEPHONE LINES	114.64
		MILL CREEK LUMBER OF KANSAS INC.	1/17/25	MIDWEST SPECIALTY FASTENER	10.20
			1/17/25	ICE MELT, SNOW SHOVEL	73.95
			1/17/25	ICE MELT	103.96
		USA CONNECTIONS	1/02/25	INTERNET SERVICES	52.74
			1/31/25	INTERNET SERVICE	50.07
		VERIZON WIRELESS	1/31/25	AIRPORT CELL	41.51
		CITY OF WELLINGTON	1/02/25	FICA TRANSFER	144.13
			1/17/25	FICA TRANSFER	144.13
			1/31/25	FICA TRANSFER	148.20
			1/02/25	MEDICARE TRANSFER	33.71
			1/17/25	MEDICARE TRANSFER	33.71
			1/31/25	MEDICARE TRANSFER	34.66
		CITY OF WELLINGTON	1/02/25	KPERS INS CONTRIBUTION	23.90
			1/17/25	KPERS INS CONTRIBUTION	23.90
			1/31/25	KPERS INS CONTRIBUTION	23.90
			1/02/25	KPERS T2 CONTRIBUTION	232.11
			1/17/25	KPERS T2 CONTRIBUTION	232.11
			1/31/25	KPERS T2 CONTRIBUTION	232.11
				TOTAL:	9,116.06
POLICE	POLICE VIN FUND	AXON ENTERPRISE, INC.	1/17/25	YR 1 TASER 10 PROJECT	8,720.48
			1/17/25	1 TASER INSTRUC COURSE	279.52
		MODERN MARKETING	12/31/24	STICKER BADGES	940.95
				TOTAL:	9,940.95
NON-DEPARTMENTAL	CLAIMS	KANSAS DEPT OF REVENUE	12/31/24	4TH QTR ST H20 PROTECTION	552.75
		KANSAS STATE TREASURER	12/31/24	REINSTATEMENT FEE	122.00
			12/31/24	JUDICIAL EDUCATION	62.00
			12/31/24	LAW ENFORCEMENT TRAINING F	1,331.00
			12/31/24	COMMUNITY CORRECTIONS	292.00
			12/31/24	SEAT BELT SAFETY FUND	260.00
			12/31/24	REINSTATEMENT FEE	122.00
			12/31/24	JUDICIAL EDUCATION	60.00
			12/31/24	LAW ENFORCEMENT TRAINING F	1,199.00
			12/31/24	COMMUNITY CORRECTIONS	568.00
			12/31/24	SEAT BELT SAFETY FUND	0.00
				TOTAL:	4,568.75
NON-DEPARTMENTAL	SCCDAT GRANT	CITY OF WELLINGTON	1/02/25	TRANSFER WITHHOLDING	242.96
			1/17/25	TRANSFER WITHHOLDING	242.96
			1/31/25	TRANSFER WITHHOLDING	203.38
			1/02/25	FICA TRANSFER	198.40
			1/17/25	FICA TRANSFER	198.40
			1/31/25	FICA TRANSFER	173.60
			1/02/25	MEDICARE TRANSFER	46.40
			1/17/25	MEDICARE TRANSFER	46.40
			1/31/25	MEDICARE TRANSFER	40.60
		CITY OF WELLINGTON	1/02/25	TRANSFER STATE WITHHOLDING	147.18
			1/17/25	TRANSFER STATE WITHHOLDING	147.18
			1/31/25	TRANSFER STATE WITHHOLDING	125.62
				TOTAL:	1,813.08
SCCDAT GRANT-KDADS	SCCDAT GRANT	KANSAS MUNICIPAL INSURANCE TRUST	1/03/25	SCCDAT	54.00
				TOTAL:	54.00

DEPARTMENT	FUND	VENDOR NAME	DATE	DESCRIPTION	AMOUNT		
DFC GRANT	SCCDAT GRANT	SCCDAT	1/17/25	COFFEE SLEEVES W/ LOGO	189.69		
			1/17/25	MIC FOR YOURTH VIDEOS	19.70		
			1/31/25	AMAZON-KINDNESS BRACELETS	177.27		
			1/02/25	FICA TRANSFER	198.40		
			1/17/25	FICA TRANSFER	198.40		
			1/31/25	FICA TRANSFER	173.60		
			1/02/25	MEDICARE TRANSFER	46.40		
			1/17/25	MEDICARE TRANSFER	46.40		
			1/31/25	MEDICARE TRANSFER	40.60		
			TOTAL:				1,090.46
			AIRPORT IMPROVEMENTS	WELLINGTON AIRPORT LOCHNER		12/31/24	REPLACE TAXIWAY GUIDANCE S
TOTAL:						35,622.00	
POLICE	DRUG AWARENESS FUN	CREATIVE PRODUCT SOURCING, INC.-DARE	1/17/25	CLASS SHIRTS	993.52		
			TOTAL:				993.52

===== FUND TOTALS =====

001	GENERAL FUND	654,583.15
112	AMBULANCE & FF EQUIPMENT	14,537.38
113	LIBRARY	130,000.00
114	EMPLOYEE BENEFIT CONTR	3,121.08
115	SPECIAL LIABILITY EXPENSE	17.00
118	FIRE INSURANCE PROCEEDS	46,869.98
121	HOSPITAL SALES TAX FUND	137,816.39
131	SPECIAL CITY HIGHWAY	11,582.12
134	SPECIAL PARKS & RECREATIO	10,584.75
137	TOURISM & CONVENTION	10,000.00
324	EQUIPMENT RESERVE	47,193.93
325	CAPITAL IMPROVEMENT	39,913.35
402	GOLF COURSE	21,173.47
415	ELEC-WATER.-WWTP	837,027.49
425	MULTI-YR CPTL. IMP.&EQU.	22,765.19
430	SANITATION LANDFILL UTILI	94,510.01
434	SANITATION EQUIP. RESERVE	6,197.00
441	WELLINGTON MUNIC.AIRPORT	11,206.25
505	POLICE VIN FUND	9,940.95
601	CLAIMS	4,568.75
603	SCCDAT GRANT	2,957.54
619	WELLINGTON AIRPORT FAA GR	35,622.00
629	DRUG AWARENESS FUND	993.52

 GRAND TOTAL: 2,153,181.30

SELECTION CRITERIA

SELECTION OPTIONS

VENDOR SET: 01-CITY OF WELLINGTON
VENDOR: All
CLASSIFICATION: All
BANK CODE: All
ITEM DATE: 0/00/0000 THRU 99/99/9999
ITEM AMOUNT: 99,999,999.00CR THRU 99,999,999.00
GL POST DATE: 0/00/0000 THRU 99/99/9999
CHECK DATE: 1/01/2025 THRU 1/31/2025

PAYROLL SELECTION

PAYROLL EXPENSES: NO
EXPENSE TYPE: N/A
CHECK DATE: 0/00/0000 THRU 99/99/9999

PRINT OPTIONS

PRINT DATE: GL Post Date
SEQUENCE: By Department
DESCRIPTION: Distribution
GL ACCTS: NO
REPORT TITLE: COUNCIL R E P O R T 1/18/2025 - 1/31/2025
SIGNATURE LINES: 0

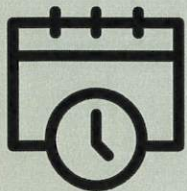
PACKET OPTIONS

INCLUDE REFUNDS: YES
INCLUDE OPEN ITEM:NO



WELLINGTON PUBLIC

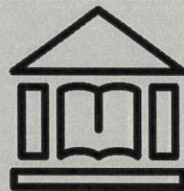
Annual Report 2024



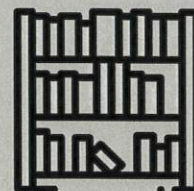
The library had **2,848** open hours in 2024!



4,856 people have a card at our library



22,484 people walked through our doors last year



The collection contained **37,960** items



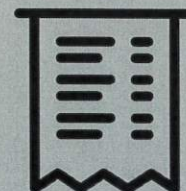
Print materials totaled **34,884**



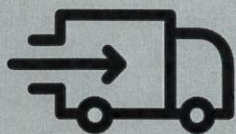
Physical videos totaled **1,119**



Total use of electronic materials **7,028**



Contributing to a total of **26,100** checkouts!



We lent our items to other libraries **853** times



7,990 uses of public computers



1,577 WiFi sessions



And brought in **978** items upon patron request



345 total programs offered



5,679 people attended in total!

READ



wellingtonpubliclibrary.org
121 WEST 7TH
WELLINGTON, KS 67152
6203262011

PUBLIC LIBRARY SURVEY

Please respond to each item, even if the answer is "0"

If any of the General Information is incorrect, please make corrections.

Click on Question Numbers to see definition or select the "Instructions" link from the red navigation bar at the top of the screen.

PART 1: IDENTIFICATION

1.1 Name of Library	WELLINGTON PUBLIC
1.2a Physical Street Address	121 WEST 7TH
1.2b Mailing Address	121 WEST 7TH
1.3 City or Town of Administrative Entity	WELLINGTON
1.4 Physical Address ZIP Code	67152
1.5 Population of the Legal Service Area	7,568 7,640
1.6 Legal Service Area Boundary Change	No
1.7 Regional Library System	SCKLS
1.8 County	SUMNER
1.9a Library Director's Name	Jo Plumb
1.9b Library Director's Email Address	Jplumb@wellingtonpubliclibrary.org
1.9c General Library Email Address	wpl@wellingtonpubliclibrary.org
1.10a Library Phone	6203262011

Online Presence

1.11 Library Website (provide URL)	wellingtonpubliclibrary.org
1.12 Facebook	Yes
1.12 Twitter	Yes
1.12 Instagram	No
1.12 Pinterest	Yes
1.12 Snapchat	No
1.12 You Tube	No
1.12 TikTok	No
1.12 Flickr	No
1.12 Goodreads	No
1.12 LinkedIn	No
1.12 Other Social Media	Yes
1.12 Other Social Media (please specify)	wellingtonpubliclibrary.tumblr.com
1.12 Other Social Media (please specify)	

Other

1.13 Friends	No
1.14 Volunteers	Yes
1.15 Do you offer meeting rooms for public use, with or without charge?	Yes

1.16 Does your library charge overdue fines for print materials?*	No
---	----

PART 2: GENERAL INFORMATION

2.1 Number of Bookmobiles	0
2.2 Do you participate in a System Consortium Online Public Access Catalog (OPAC)?	Yes
2.2a If no, what ILS/OPAC system do you use?	1
2.3 Number of Registered Users	4,856 4,812
2.4 Number of Central Libraries	1
2.5 Number of Branch Libraries	0

Information

Include the main library here. Include name of branch, branch head librarian, street address (no post office box numbers), city, zip + four, email address, telephone, fax and web address. A branch library is an auxiliary unit of an administrative entity which has at least all of the following: 1) separate quarters, 2) an organized collection of library materials, 3) paid staff, and 4) regularly scheduled hours for opening to the public.

Location	2.6 Legal Name	2.7 Square footage
WELLINGTON PUBLIC LIBRARY	WELLINGTON PUBLIC	8,928

Hours

Please select 'Save' to add your total hours to question 2.6

Location	2.8 Public service hours open per year	2.9 Public service weeks open per year
WELLINGTON PUBLIC LIBRARY	2,848 2,848	52 52

Total Hours

2.10 Public Service Hours Per Year	2,848 2,848
------------------------------------	--

Address

Location	2.11 Street Address (no post office box numbers)	2.11a City
WELLINGTON PUBLIC LIBRARY	121 WEST 7TH	WELLINGTON

Contact Information

Location	2.11b Email Address	2.11c Telephone	2.11d Fax
WELLINGTON PUBLIC LIBRARY	wpl@wellingtonpubliclibrary.org	6203262011	6203268193

Library Services

2.12 Library Visits	22,484 21,464
2.12a Library Visits Reporting Method	Annual Count
2.13 Reference Transactions	1,754 1,025

PART 3: PAID STAFF-Full time equivalent (FTE)

Include total hours for all individuals in each category. The full time equivalent (FTE) for any staff category is determined by adding the total hours worked per typical week by all category employees and dividing by 40.

3.1 Total Librarian Hours	40.00	40.00
3.1a Total Librarians	1.00	1.00
3.2 ALA-MLS Hours	40.00	40.00
3.2a ALA-MLS	1.00	1.00
3.3 All Other Paid Employee Hours	182.00	198.00
3.3a All Other Paid Employees	4.55	4.95
3.4 Total Paid Employee Hours	222.00	238.00
3.4a Total Paid Employees	5.55	5.95

PART 4: SALARY SURVEY

Do not report individual names. For the purposes of this report, full-time equals 40 hours per week.

Summary	6	10	6
4.1a Name of Position		4.1b Current number of employees in this position	4.1c Current Hourly Salary (or range if more than one is in the position)
Library Director		1	25.70
Children's Librarian		1	14.95
Library Assistant Cataloging		1	11.25
Pt time Library Assistant		6	9.00 - 10.25
Cleaning Staff		1	10.25
Library Assistant			9.00 - 11.00

PART 5: BENEFITS

5.1 Does your library provide paid vacation days?	Yes
5.2 Does your library provide sick leave days?	Yes
5.3 Does your library provide retirement benefits?	Yes
5.4 Does your library provide medical insurance?	No

PART 6: OPERATING INCOME

Report all income as whole dollars only. If your library does not have an item in its budget or if the information is not available, enter "0". For most libraries, mill levy information can be located at <https://admin.ks.gov/offices/accounts-reports/local-government/municipal-services/municipal-budgets> or by asking your city office. Locate the appropriate budget for your library. Spreadsheet budgets will have a red tab called

"Library Grant", .PDF budgets will have a page headed "Worksheet for State Grant-in-Aid to Public Libraries". Note- some libraries will have more than one budget to check.

6.1 Library Fund Mill Levy Rate (three decimal places)	5.000	5.000
6.1a Library Fund Revenue (whole dollars only)	\$274,040	\$254,560
6.1b Did your municipality levy a tax on behalf of your library in 2024?	No	
6.1c Was municipal funding to the library provided for the amount required in the budget approved by your library board?		
6.2 Library Employee Benefits Fund Levy Rate (three decimal places)	0.000	0.000
6.2a Library Employee Benefits Fund Revenue (whole dollars only)	\$0	\$0
6.3 Additional municipal government funds	\$0	-1
6.4 Indirect additional local public support	\$0	\$0
6.5 Local Government Revenue	\$274,040	\$254,560
6.6 State Grant-in-Aid	\$2,144	\$2,161
6.7 Regional Library System Grant Funds	\$26,769	\$22,588
6.8 State Government Revenue	\$28,913	\$24,749
6.9 Federal Government Revenue	\$0	\$0
6.10 Other Revenue	\$20,867	\$16,125
6.11 Total Revenue	\$323,820	\$295,434

PART 7: CAPITAL FUNDS

Note: The survey definition of acceptable capital expenditures is NOT the same as the Kansas statute definition. To the best of your ability, please use the survey definition here. Funds designated for the acquisition of or additions to fixed assets such as building sites, new buildings and building additions, new equipment, initial book stock, furnishings for new or expanded buildings, and new vehicles. This excludes replacement and repair of existing furniture and equipment, regular purchase of library materials, and investments for capital appreciation.

7.1 Does your library have a Capital Improvement Fund?	Yes	
7.1a Local Government Capital Revenue	\$0	\$0
7.1b State Government Capital Revenue	\$0	\$0
7.1c Federal Government Capital Revenue	\$0	\$0
7.1d Other Capital Revenue	\$155,215	\$128,086
7.1e Total Capital Revenue	\$155,215	\$128,086
7.2 Total Capital Expenditures	\$0	\$12,700

PART 8: EXPENDITURES

Report all expenses as whole dollars only. If your library does not have an item in its budget or the information is not available, enter "0".

Staff Expenditures

8.1 Salaries & Wages Expenditures	\$163,946	\$156,277
8.2 Employee Benefits Expenditures	\$26,512	\$24,436
8.3 Total Staff Expenditures	\$190,458	\$180,713

Print Collection Expenditures

8.4 Expenditures on Print Books	\$10,926	\$8,054
8.5 Expenditures on Print Periodicals	\$0	\$0
8.6 Total Print Materials Expenditures	\$10,926	\$8,054

Electronic Materials Expenditures

Money contributed to the Statewide Digital Book eLending or another consortium should be included. Funds expended for your own service, not connected with another library or system should also be counted.

8.7 Expenditures on Electronic Materials	\$1,500	
8.8 Expenditures on all other electronic content. Include databases and online resources	\$0	
8.9 Total Expenditures on All Electronic Materials ¹	\$1,500	\$1,500

Collection Expenditures

8.10 Other Physical Materials Expenditures	\$0	\$0
8.11 Total Collection Expenditures	\$12,426	\$9,554

Operating Expenditures

8.12 Other Operating Expenditures	\$104,941	\$84,350
8.13 Total Operating Expenditures	\$307,825	\$274,617

PART 9: RESOURCES

9.1a Books owned at the beginning of 2024	34,213	33,566
9.1b Books added during the calendar year	910	1,164
9.1c Books withdrawn during the calendar year	239	517
9.1d Total Print Materials at end of 2024	34,884	34,213
9.2 Audio - Physical Units	917	770
9.3 Video - Physical Units	1,119	1,067
9.4 Other Circulating Items	1,040	1,119
9.5 Total Physical Items in Collection	37,960	37,169

9.6 Audio-Downloadable Units

E-audio are digital files of sound only (e.g., audiobooks, music) that may be accessed online from an electronic device. Do not consider resources available for free in the public domain when answering the following questions.

9.6a E-Audio via AE	Yes
9.6b E-Audio via Consortium	Yes
9.6c E-Audio via State	Yes

9.7 Video-Downloadable Units

E-videos are digital files of moving visual images with or without sound (e.g., movies, television shows) that may be accessed online from an electronic device. Do not consider resources available for free in the public domain when

answering the following questions.

9.7a E-Video via AE	No
9.7b E-Video via Consortium	No
9.7c E-Video via State	No

9.8 Total Electronic Books (Ebooks)

E-books are the digital equivalent of printed books that may be accessed online from an electronic device. E-books also include e-comics. Do not consider resources available for free in the public domain when answering the following questions.

9.8a E-Books via AE	Yes
9.8b E-Books via Consortium	Yes
9.8c E-Books via State	Yes

9.9 Electronic Serials

E-serials are periodic digital publications equivalent to printed newspapers, magazines, and similar media that are viewed as entire issues rather than as single articles returned from a research query. Do not consider resources available for free in the public domain when answering the following questions.

9.9a E-Serials via AE	No
9.9b E-Serials via Consortium	No
9.9c E-Serials via State	No

9.10 Research Databases

Research databases are organized collections of electronic data or records (e.g., facts, abstracts, articles, bibliographic data, texts, photographs) that can be searched to retrieve information. Do not consider resources available for free when answering the following questions.

9.10a Research Databases via AE	No
9.10b Research Databases via Consortium	No
9.10c Research Databases via State	Yes

9.11 Online Learning Platforms

Online learning platforms primarily provide instruction, tools, and resources to enhance education, lifelong learning, and skill building. Platforms may offer homework assistance, language learning, test preparation, professional development, resume assistance, hobby instruction, etc. Do not consider resources available for free when answering the following questions.

9.11a Online Learning Platforms via AE	No
9.11b Online Learning Platforms via Consortium	No
9.11c Online Learning Platforms via State	Yes

PART 10: PUBLIC COMPUTERS & INTERNET ACCESS

10.1 Internet Computers Used by General Public	32	33
10.2 Number of Uses (Sessions) of Public Internet Computers Per Year	7,990	8,322
10.2a Number Uses (Sessions) of Public Internet Computers Reporting Method	Annual Count	
10.3 Does your library provide wireless (WiFi) access to the Internet to patrons?	Yes	
10.4 Wireless Sessions - Annually	1,577	1,285
10.4a Wireless Sessions - Reporting Method	Annual Count	

10.5 Does your library circulate WiFi hotspots?	No
10.5a Total annual circulation of WiFi hotspots	
10.6 Does your library provide computer or technology skills training to patrons?	Yes

PART 11: CIRCULATION & PROGRAMS

The total annual circulation of all library materials of all types, including renewals. Count all materials in all formats that are checked out for use outside the library. Count interlibrary loan transactions only for items borrowed and checked out to patrons. Do not include items checked out to another library. Do not use circulation multipliers. For example, if a film is checked out and shown to 30 people, count 1 circulation, not 30. Do not report "automatic renewals" as circulations. Report annual totals.

Physical

11.1 Circulation of Adult Print Materials	7,822	
11.1a Circulation of Adult Other Physical Materials	1,003	
11.1b Total Circulation of Adult Materials	8,825	
11.2 Circulation of Children's Print Materials	10,247	
11.2a Circulation of Children's Other Physical Materials	0	
11.2b Total Circulation of all Children's Physical Materials	10,247	
11.3 Did your library offer automatic renewal for any physical materials during the reporting period?	No	
11.4 Total Circulation of Print Materials	18,069	
11.4a Total Circulation of Other Physical Items	1,003	
11.4b Total Physical Item Circulation	19,072	18,158

Electronic

	Local and/or consortial collection	State Library collection	Total
11.5 E-book	6,304	149	6,453
11.6 E-serial	0	0	0
11.7 E-audio	0	575	575
11.8 E-video	0	0	0

Use of Electronic Materials (Retired in 2024)

Statewide Collection (cloudLibrary & Freading)	1,284
Sunflower Overdrive Consortium	5,786
Overdrive (not part of Sunflower)	0
Axis 360	0
Hoopla (total circulation of audio, video and ebooks)	0
Other	0

Successful Retrieval of Electronic Resources (Retired in 2024)

Statewide Collection	0
Zinio-RBdigital	0
Flipster	0

Other		0
-------	--	---

Total Electronic

11.9 Total Use of Electronic Materials	7,028	7,070
11.10 Total Circulation of materials	26,100	25,228

Interlibrary Loan Statistics

"Original items" are books, videos, tapes, and other material that will be returned to the lender; "Copies" are items that the user may keep (generally photocopies).

For grant requirements, SCKLS uses its own definition for ILL. Please consult with SCKLS for clarification.

Please include all of your interlibrary loan activity--KICNET, OCLC, sharing via ILS consortium, email, etc.

Borrowing

Requesting of materials from another library for your own patrons.

11.10 Materials Borrowed (books, DVDs, etc.)	978	945
11.11 Non-returns Received (Photocopies, printed copies of microfilm, electronically delivered articles or book chapters, etc)	0	0
11.12 Interlibrary Loans Received	978	945
11.13 Borrowing requests that go unfilled	121	94

Lending

Sending out of your materials to another library for their patrons.

11.14 Materials Loaned (books, DVDs, etc.)	853	868
11.15 Non-returns Provided (Photocopies, printed copies of microfilm, electronically delivered articles or book chapters, etc)	0	0
11.16 Interlibrary Loans Provided	853	868
11.17 Loan requests that go unfilled	92	51

Self-Directed Activities

11.18 Do you offer self-directed activities at the library?	Yes	Yes
11.18a How many self-directed activities were offered?	34	25
11.18b Approximately how many patrons took part in these self-directed activities?	497	2,082
11.18c What types of self-directed activities were offered?	reading logs, reading challenges each month, valentines day cards, hidden pictures, neighborhood scavenger hunt, word searches, library card bingo, Library Crawl	

Programming

Count each instance of a series of programs as an event. Example: a weekly story hour is 52 programs, not one.

Recorded Programs

Recorded, not live, on-demand programming.

11.19 Number of recordings of program content	0	0
---	---	---

11.20 Number of views of recorded program content	0	0
---	---	---

Kansas Reads to Preschoolers

Count all attendees, regardless of age.

11.21a Number of KS Reads Programs	2	
11.21b Attendance for KS Reads Program	41	

Early Literacy (birth-5)

Count all attendees, regardless of age.

11.22a Number of children's 0-5 physical in-person programs, onsite (at the library)	67	80
11.22b Attendance at children's 0-5 physical in-person programs, held onsite (at the library)	1,276	1,419
11.22c Number of children's 0-5 physical in-person programs, held offsite		0
11.22d Attendance at children 0-5 physical in-person programs, held offsite	0	0
11.22e Number of live virtual children's 0-5 programs	0	0
11.22f Attendance at live virtual children's 0-5 programs	0	0
11.22g Total early literacy programs	69	89
11.22h Total early literacy program attendance	1,317	1,510

Children (6-11)

Count all attendees, regardless of age.

11.23a Number of children's 6-11 physical in-person programs, onsite (at the library)	38	72
11.23b Attendance at children's 6-11 physical in-person programs, held onsite (at the library)	576	752
11.23c Number of children's 6-11 physical in-person programs, held offsite	2	3
11.23d Attendance at children's 6-11 physical in-person programs, held offsite	292	1,105
11.23e Number of live virtual children's 6-11 programs	0	0
11.23f Attendance at live virtual children's 6-11 programs	0	0
11.23g Total children's 6-11 programs	40	75
11.23h Total children's 6-11 program attendance ²	868	1,857

Young Adult (12-18)

Count all attendees, regardless of age.

11.24a Number of young adult physical in-person programs, onsite (at the library)	65	16
11.24b Attendance at young adult physical in-person programs, held onsite (at the library)	270	68
11.24c Number of young adult physical in-person programs, held offsite	1	0
11.24d Attendance at young adult physical in-person programs, held offsite	73	0
11.24e Number of live virtual young adult programs	0	0
11.24f Attendance at live virtual young adult programs	0	0
11.24g Total young adult programs	66	16
11.24h Total young adult program attendance	343	68

Adult (19+)

11.25a Number of adult physical in-person programs, onsite (at the library)	86	80
---	----	----

11.25b Attendance at physical in-person programs, held onsite (at the library)	1,617	587
11.25c Number of adult physical in-person programs, held offsite	34	0
11.25d Attendance at physical in-person programs, held offsite ³	490	0
11.25e Number of live virtual adult programs	0	0
11.25f Attendance at live virtual adult programs	0	0
11.25g Total number of adult programs/events	120	80
11.25h Total attendance at adult programs/events	2,107	587

General Interest (all ages)

11.26a Number of general interest physical in-person programs, onsite (at the library)	50	2
11.26b Attendance at general interest physical in-person programs, held onsite (at the library)	1,044	0
11.26c Number of general interest physical in-person programs, held offsite	0	3
11.26d Attendance at general interest physical in-person programs, held offsite	0	1,719
11.26e Number of live virtual general interest programs	0	0
11.26f Attendance at live virtual general interest programs	0	0
11.26g Total number of general interest programs/events	50	5
11.26h Total attendance at general interest programs/events	1,044	1,719

Program Totals

11.27 Total Children's Programs	109	164
11.28 Children's Program Attendance	2,185	3,367
11.29 Number of In-Person Onsite Program Sessions	308	259
11.30 In-Person Onsite Program Attendance	4,824	2,917
11.31 Number of In-Person Offsite Program Sessions	37	6
11.32 In-Person Offsite Program Attendance	855	2,824
11.33 Total live virtual programs	0	0
11.34 Total live virtual program attendance	0	0
11.35 Total Number of Programs	345	265
11.36 Total Program Attendance	5,679	5,741

All Other Programs (e.g. Adult, Family, Other) (Retired in 2021)

PART 12: STATE AID EVALUATION

Completing this section fulfills your library's reporting eligibility requirement for State Grants-in-Aid and serves as your application for Grants-in-Aid. Please enter "0" if your library did not receive funds in the prior year and you wish to apply this year.

State Aid Received

12.1 Amount of Grant received in 2024	\$2,144	\$2,161
---------------------------------------	---------	---------

State Aid Expenditures

12.2a Salaries	\$2,144	\$2,161
12.2b Books	\$0	\$0
12.2c If funds were spent on books, please estimate the number of books purchased.	0	0

12.2d Other	\$0	\$0
12.2e If funds were spent on "Other", please indicate what the expenditure was for:	0	
12.3 TOTAL State Aid Expenditures for 2024 (Must be the same as 12.1)	\$2,144	\$2,161

State Aid Requested

The State Librarian annually requests aid based on several factors including the amount requested by public libraries. Total requested aid will be included in the State Library's budget proposal. The requested amount will illustrate the level of need among libraries across the state; however, the final allocation for State Aid is determined by the governor and the legislature.

12.4 Indicate amount of State Aid requested (for next state budget cycle)	\$7,000	\$7,000
---	---------	---------

PART 13: KANSAS CHILDREN'S INTERNET PROTECTION ACT (KS-CIPA)

Please verify that your library board has reviewed library's policy regarding KS-CIPA within the last 3 years, and provide the date of the most recent review.

The applicant provides this assurance for the purpose of certifying ongoing compliance with

- The Kansas children's internet protection act, K.S.A. 75-2589, which requires that any public library that provides public access to a computer shall implement and enforce technology protection measures as specified by statute, and with
- Public library internet access policy, KAR 54-4-1, which defines the internet access policy required under statute, and directs the governing body to review this policy at least once every three years.

The applicant further certifies that review of the policy is current by providing the date of the most recent policy review

13.1 Date last reviewed Kansas Children's Internet Protection Act (KS-CIPA)	2024-02-15	2024-02-15
---	------------	------------

PART 14: CIVIL RIGHTS CERTIFICATE

Select YES you agree or Select NO you don't agree.

The applicant provides this assurance in consideration of and for the purpose of obtaining Federal grants, loans, contracts, (except contracts of insurance or guaranty), property, discounts, or other Federal financial assistance to education programs or activities from the Institute of Museum and Library Services.

The applicant assures that it will comply with:

1. Title VI of the Civil Rights Act of 1964, as amended. 42 U.S.C. 2000d et seq., which prohibits discrimination on the basis of race, color, or national origin in programs and activities receiving Federal financial assistance.

2. Section 504, of the Rehabilitation Act of 1973, as amended, 29 U.S.C. 794 et seq., which prohibits discrimination on the basis of handicap in programs and activities receiving Federal financial assistance.

3. Title IX of the Education Amendments of 1972, as amended. 20 U.S.C. 1681 et seq., which prohibits discrimination on the basis of sex in education programs and activities receiving Federal financial assistance.

4. The Age Discrimination Act of 1975, as amended. 42 U.S.C. 6101 et seq., which prohibits discrimination on the basis of age in programs or activities receiving Federal financial assistance.

5. All regulations, guidelines, and standards lawfully adopted under the above statutes by the Institute of Museum and Library Services.

The applicant agrees that compliance with this Assurance constitutes a condition of continued receipt of Federal financial assistance, and that it is binding upon the applicant, its successors, transferees, and assignees for the period during which such assistance is provided. The applicant further assures that all contractors, subcontractors, subgrantees or others with whom it arranges to provide services or benefits to its students or employees in connection with its education programs or activities are not discriminating in violation of the above statutes, regulations, guidelines, and standards against those students or employees. In the event of failure to comply the applicant understands that assistance can be terminated and the applicant denied the right to receive further assistance. The applicant also understands that the Institute of Museum and Library Services may at its discretion seek a court order requiring compliance with the terms of the Assurance or seek other appropriate judicial relief.

I agree with the above Civil Right Certification.

14.1 I agree with the above Civil Right Certification.
--

Yes

PART 15: CERTIFICATION

Thank you for completing this report. Please make a copy for your library files and submit the original online no later than February 5, 2025.

Submission after February 12, 2025 will result in the library deemed ineligible for State Grants-in-Aid.

15.1 Respondent's Name

Josephine Plumb

15.2 Respondent's Title	Director
15.3 Respondent's Email	jplumb@wellingtonpubliclibrary.org

¹, 8.9 we did not add additional funding to the E-Books. This is the base amount. (0-2025-01-30)

², 11.23h we did not hold as many off-site programs as previous years. (0-2025-01-29)

³, 11.25d This total includes Library crawl to 25 libraries with 330 participation. (0-2025-01-29)

January 31, 2025

TO THE HONORABLE MAYOR AND COUNCIL:

On January 31, 2025 we received funds from the Kansas State Treasurer that represented our portion of the Local Retailer Sales Tax and Local Consumers Compensating Use Tax Funds remitted to the state in December 2024.

The following is the breakdown between Local Retailer Sales Tax and Compensating Use Tax:

SALES – \$225,819.45 USE - \$49,813.32

The following deposits were made:

General Fund Local Retailers Sales Tax – \$112,909.72

General Fund Local Compensating Use Tax - \$24,906.66

Hospital Sales Tax Fund - Local Ret Sales Tax – \$112,909.73

Hospital Sales Tax Fund - Local Comp Use Tax - \$24,906.66

Received year to date in the Hospital Sales Tax Fund:

Sales Tax - \$112,909.73

Comp Use Tax - \$24,906.66

Respectfully submitted,

Martha Pennington
Deputy City Clerk

AMBULANCE MONTHLY FINANCIAL REPORT
DECEMBER 2024

		MEDICLAIMS/AVC	COLLECTIONS	TOTALS
Year 2024 Sumner County Subsidy				
Prior Month Ending Balance (a)	=	\$ 409,511.71	\$ 580,976.31	\$ 990,488.02
Mediclaims		\$ 409,511.71		
CBK			\$ 410,988.99	
ARSI/Other Collections			\$ 54,189.79	
Kansas Set Off			\$ 115,797.53	
Total Revenue Balance (b)	=	\$ 113,507.20	\$ -	\$ 113,507.20
Billed by Mediclaims	+	\$ 113,507.20		
Transfer to Collections CBK*	+		\$ -	
Patient Interest/Fees/Other (Collections)				
Total Charges (c)	=	\$ (122,750.97)	\$ (3,159.70)	\$ (125,910.67)
Patient Payments	-	\$ (3,287.60)		
Insurance Payments	-	\$ (64,738.65)		
OTHER (e.g.Outside Assists, VEH ASSESS)	-			
Collections Payments (CBK/ARSI/Other)			\$ (1,998.89)	
KS Set Off Payments				
Accounts to Collections (CBK)*	-	\$ (14,660.65)		
Medicare Write-Off	-	\$ (25,630.93)		
Sequestration Reduction	-	\$ (848.74)		
Blue Cross Write-Off	-	\$ (1,462.97)		
Medicaid Write-Off	-	\$ (7,830.91)		
Other Insurance Write-Off	-	\$ (3,905.46)		
Other Write-Off's (bankruptcies, deceased, VEH ASSESS)	-	\$ (385.06)		
Collections Fees (CBK/ARSI/Other)			\$ (1,160.81)	
Overpayment Refunds/Returned check	+	\$ -		
REPORT BALANCE (b+c)= (d)	=	\$ (9,243.77)	\$ (3,159.70)	
AGING RECEIVABLES BALANCE (d+a)		\$ 400,267.94	\$ 577,816.61	
			TOTAL BALANCE	\$ 978,084.55
Month-To Date-Runs: Year 2023		185		
Year-To-Date-Runs: Year 2023		1743		
Month-To-Date Runs: Year 2024		194		
Year-To-Date Runs: Year 2024		2087		

Monthly 2024	January	February	March	April	May	June	July	August	September	October	November	December	Total	Last year
RESPONSES														
City Fires	-	6	3	5	1	7	5	3	3	7	7	4	51	36
District 6 Fires	-	1	-	3	-	-	1	3	4	5	1	1	19	8
District 7 Fires	1	2	1	3	-	-	3	-	1	1	-	3	15	23
KTA Fires not in Dist 6&7	3	-	2	-	-	-	4	1	-	-	-	-	10	3
Mutual Aid Given	3	2	2	-	1	1	-	3	-	3	2	2	19	20
Mutual Aid Received	2	2	1	1	-	1	-	2	1	1	2	-	13	13
Property Loss \$	-	25	-	35,400	-	50,700	15,500	150,000	116,200	98,160	84,500	15,100	565,585	514,475
FIRE SERVICE														
Fire	4	11	4	12	1	7	10	9	8	18	8	8	100	85
Medical/Rescue	111	99	108	77	112	91	79	89	83	106	109	105	1,169	1,362
Hazardous Condition	8	4	4	3	6	16	10	2	2	4	5	9	73	88
Service Calls	2	1	4	510	7	3	1	4	1	4	2	3	542	55
Good Intent Calls	12	9	8	11	8	18	11	10	8	11	14	5	125	144
Alarm Activations	8	3	5	-	2	5	6	2	1	1	2	1	36	41
Severe Weather	-	-	-	-	-	-	-	-	-	-	-	-	-	1
Other/Special Type	1	-	1	-	-	-	-	-	-	-	-	-	2	4
EMS														
City EMS	109	161	167	109	158	152	122	142	152	158	185	173	1,788	1,378
County EMS	54	12	29	20	23	29	25	25	23	21	17	21	299	365
Transported to WVC ER	61	47	54	42	69	56	47	64	67	51	64	63	685	661
Wichita & area transports	41	33	30	18	27	18	48	35	42	45	59	59	455	633
Non Transport	76	62	71	69	85	79	52	68	66	83	79	72	862	875
County Bypass	17	6	14	-	3	7	14	4	4	6	3	5	83	101
City Bypass	9	1	7	-	7	3	6	7	5	1	7	3	56	105
HOURS WORKED														
Regular Hours Worked	4,406.00	3,587.00	4,833.75	3,519.75	3,656.51	3,607.61	4,477.00	5,553.75	4,135.00	4,066.25	4,293.25	4,753.00	50,888.87	53,358.50
Incident Call In Overtime	96.50	64.75	93.00	65.25	115.75	67.50	107.00	108.75	131.50	158.75	92.00	60.50	1,161.25	1,616.50
Other Overtime	159.75	176.25	186.00	209.75	179.00	62.25	65.50	32.25	14.25	33.50	12.25	6.25	1,137.00	491.50
FLSA Overtime	294.00	341.00	478.00	272.50	294.00	330.00	273.25	500.00	381.25	382.00	336.00	382.00	4,264.00	4,428.00
ACTIVITIES														
Training Hours	10.30	69.00	44.00	30.00	113.00	229.00	117.50	104.00	54.00	146.00	91.00	52.00	1,059.80	2,296.25
Inspections/Preplans	-	25	27	2	18	11	14	1	7	5	4	5.00	119	171
Fire Hydrants Tested	-	-	-	-	-	-	-	-	-	-	-	-	-	435
Tours	1	-	-	-	2	1	-	2	1	1	1	-	9	7
Community Events	-	-	-	1	2	1	1	1	2	1	-	2.00	11	42
Public Education	-	-	-	-	-	-	1	1	-	8	-	-	10	17
Fire Investigations	-	-	-	-	-	-	-	-	2	2	2	1.00	7	9
REVENUE														
Ambulance Revenue	84,826.24	36,032.79	49,919.52	44,559.64	93,245.57	68,787.78	42,718.63	55,832.10	49,075.48	51,594.82	37,514.12	70,329.72	684,436.41	809,647.00
County Subsidy for EMS	-	21,916.67	21,916.67	21,916.67	21,916.67	21,916.67	21,916.67	21,916.67	21,916.67	21,916.67	21,916.67	43,833.30	263,000.00	263,004.00
Fire District 6	250.00	250.00	14,587.00	250.00	750.00	14,087.00	500.00	250.00	-	15,089.00	1,500.00	-	47,513.00	44,883.00
Fire District 7	131.26	446.32	565.02	409.01	981.37	1,221.35	-	1,196.83	210.18	283.69	532.75	-	5,977.78	7,990.00
Grants/Donations	-	-	-	850.00	-	-	-	-	-	-	-	-	850.00	35,546.00
Haz Mat Response	-	-	-	-	-	-	-	-	-	1,685.00	-	-	1,685.00	427.00
Total Monthly Revenue	85,207.50	58,645.78	86,988.21	67,985.32	116,893.61	106,012.80	65,135.30	79,195.60	71,202.33	90,569.18	61,463.54	114,163.02	1,003,462.19	1,161,497.00

December 2024 WRC Board Meeting Notes

December 17th, 2024



Call to Order / Roll Call – The meeting was called to order by WRC President, Hankie Holefelder, at 7:02 am with the following members and staff present: Tami McCue, John Brand, Tanner Ford and Cody White. Erma Ratliff was available via conference call and Betty Zeka was absent.

Minutes / Income and Expenditures – Tami moved to approve minutes and expenditures as presented, seconded by John, all said aye.

Board Member Report – N/A

Items of Business – The WRC staff Christmas party will be held at the Wellington Retro Bowl on December 28th from 5:00-7:00pm.

Online bidding was recently completed for the property located at 715 North Woodlawn. Theurer Auction/Realty represented the Wellington Recreation Foundation and WRC in the bidding process. The top bid went to the foundation for the amount of \$78,000, but was rejected and counter offered by the seller for the amount of \$300,000 plus the 10% buyer's premium.

The registration is open for the Wellington Community Challenge. An informational meeting was held on Sunday December 8th, with only one team showing up to hear the information. Last year five teams participated, and this year is looking promising to eclipse last year's number of teams.

An update on the aquatic center repairs was given. Bids are scheduled to be opened on January 7th, with the city council voting whether or not to accept on January 21st.

A middle school dance was held this past Saturday with 133 kids in attendance. This was the last scheduled WRC sponsored middle school event for 2024.

Holiday closures for the WRC and WRFC were discussed. The WRC will be closed on 12/24-26 and 12/31-1/1. The WRFC will close at 1:00 pm on 12/24, closed on 12/25, close at 4:00 pm on 12/31 and closed on 1/1.

Cody and Tanner will be attending the 2025 KRPA Conference in Manhattan from January 27-30. This will force the January board meeting to be held one week earlier, putting it on January 21st.

Program Review – Tanner- Basketball season just wrapped up the second week, with the third and final week before Christmas break taking place this coming weekend. Tanner has faced many challenges with scheduling issues and working with a new sports director out of Winfield. Tanner, the Winfield sports director and town representatives that participate in this league are working together to iron out the kinks. Baseball tournaments for 2025 have been posted to the tournament website. The WRC is looking to host a softball tournament, but registering and listing a tournament through the USSSA site has proven to be difficult due to the representative in charge picking and choosing when and where to allow a tournament to be placed. Discussions with Winfield and Ark City Recreation Commissions, regarding coming together to form our own sports leagues, took place late summer/early fall, but no traction has been made. Wellington will remain a part of the Quad County baseball and softball league for 2025.

At 7:33 am John moved to adjourn the meeting, seconded by Tami, all said aye.

Next scheduled board meeting will be Tuesday, December 17th, 2024.

Respectfully submitted by Cody White

CITY OF WELLINGTON, KANSAS 67152
 TREASURER'S QUARTERLY FINANCIAL STATEMENT
 FOR THE PERIOD FROM October 1, 2024-December 31, 2024
 This form meets the Requirements of K.S.A 12-1608

FUNDS		OLD BALANCE	REVENUE	EXPENDITURES	NEW BALANCE
		Last Report		Warrants Paid	(b+c-d)
001	General	4,006,434.25	2,548,560.21	(2,762,605.35)	3,792,389.11
112	Ambulance & Firefighting	186,197.26	6,262.43	(39,592.38)	152,867.31
113	Library	45,160.80	10,208.91	(55,000.00)	369.71
114	Employees Bene Contrib	512,230.60	350,179.06	(341,145.58)	521,264.08
115	Special Liability Expense	691,633.09	30,498.89	(180,444.51)	541,687.47
118	Fire Insurance Proceeds	6,856.58	46,900.05	0.00	53,756.63
121	Hospital Sales Tax Fund	0.00	571,650.99	(571,650.99)	0.00
131	Special City Highway	178,915.66	54,193.40	(54,214.04)	178,895.02
133	Spec Alcohol & Drug Prog	7,247.01	4,620.09	(5,875.00)	5,992.10
134	Special Parks & Recreation	44,826.11	4,901.74	(14,959.07)	34,768.78
137	Tourism & Convention	52,495.87	13,118.38	(19,992.47)	45,621.78
201	Bond & Interest	272,413.35	52,044.74	(174,070.88)	150,387.21
202	Hospital Emerg. Dept. Bonds	209,112.33	0.00	0.00	209,112.33
205	Bond Redemption Fund	0.00	0.00	0.00	0.00
206	WRC Bond Payment Fund	0.00	56,862.50	(56,862.50)	0.00
311	Housing Authority Reserve	121,075.26	0.00	0.00	121,075.26
324	Equipment Reserve	310,382.97	123,910.50	(98,269.11)	336,024.36
325	Capital Improvement	1,212,856.40	1,582,432.58	(991,059.60)	1,804,229.38
327	American Rescue Plan	420,607.85	0.00	(420,607.85)	0.00
328	Plum Street Waterline	2,000.00	0.00	0.00	2,000.00
329	Land Bank	6,959.70	2,036.00	(42.90)	8,952.80
401	Auditorium A/C Fund	37,257.22	349.98	0.00	37,607.20
402	Golf Course	(167,544.55)	135,286.13	(131,600.41)	(163,858.83)
415	Elec/Wtrwks/Sew U.	8,275,416.62	6,556,862.06	(6,954,961.96)	7,877,316.72
423	Utility System Construction	247,596.74	2,325.80	0.00	249,922.54
425	Multi-Yr. Cap Imp & Equip Res	6,477,251.48	568,876.65	(100,398.37)	6,945,729.76
430	Sanitation Landfill Utility	293,608.97	518,574.54	(580,254.86)	231,928.65
434	Sanitation Equipment Reserve	42,637.98	31,944.70	(6,744.34)	67,838.34
441	Wellington Municipal Airport	16,085.27	113,779.49	(46,645.37)	83,219.39
501	Special Improvement	109,144.51	1,048.12	0.00	110,192.63
504	Sanitation Improvement	15,572.10	175.61	0.00	15,747.71
505	Police VIN Fund	23,007.60	6,621.69	(8,105.35)	21,523.94
601	Claims	25,077.96	12,613.13	(22,707.51)	14,983.58
602	Public Library Trust	169,261.57	1,589.96	0.00	170,851.53
603	SCCDAT Grant	10,461.69	33,963.78	(34,179.58)	10,245.89
604	Muni Aud Renovation Trust	46,351.56	459.72	0.00	46,811.28
605	Opioid Settlement Fund	47,251.90	2,963.62	(84.35)	50,131.17
606	Recreation Trust	74,169.12	2,217.90	0.00	76,387.02
607	Regional Park Trust	44,806.95	4,325.28	(644.96)	48,487.27
608	Wgnt Mun Golf Trust	601.93	104.17	0.00	706.10
609	Haz Mat Response Fund	5,340.23	50.15	0.00	5,390.38
610	Wgtn. Mun Airport Trust	1,676.51	15.74	0.00	1,692.25
611	Fire Prevention & Education	466.07	4.37	0.00	470.44
612	Wgtn.Ambulance Serv. Trust	4,452.37	41.81	0.00	4,494.18
613	Nichols' Family Trust	305.58	3.87	0.00	309.45
614	Drug Tax Distribution Trust	7,974.28	92.35	0.00	8,066.63
616	CDBG Grant Fund	0.00	0.00	0.00	0.00
617	Employee Community Service	2.93	0.00	0.00	2.93
619	Wellington FAA Grant	(56,990.16)	0.00	(30,688.72)	(87,678.88)
620	Annie Hamilton Trust	1,881.98	17.67	0.00	1,899.65
622	Mildred Share McLean Trust	5,794.32	54.43	0.00	5,848.75
623	Cemetery Beautification Trust	9,096.11	443.93	0.00	9,540.04
624	Mausoleum Maintenance Trust	13,715.86	132.08	(675.00)	13,172.94
626	Cara Saunders Beaut. Trust	572.18	5.38	0.00	577.56
628	Permanent Cemetery Endow.Tr.	159,278.71	2,531.22	0.00	161,809.93
629	Drug Awareness Fund	6,659.51	10,008.21	(7,347.88)	9,319.84
630	Asset Forfeiture	4,831.88	45.38	0.00	4,877.26
	TOTALS INCLUDING ASSETS	24,240,480.07	13,465,909.39	(13,711,430.89)	23,994,958.57

AVAILABLE CASH:

SAVING ACCOUNTS:

RCB	10.14
BOC	3,809,656.03
DEPOSITS IN TRANSIT	0.00

CHECKING ACCOUNTS:

IMPACT	10.00
SSB	87.66
BOC	675,675.15
BOC	11,785.28

INVESTED CASH	20,126,826.67
TOTAL CASH & INVESTMENTS	24,636,001.61
LESS OUTSTANDING CHECKS	(641,043.04)

TOTAL AVAILABLE CASH 23,994,958.57
(TO AGREE WITH TOTAL FUNDS BALANCE)

LIABILITIES AND OBLIGATIONS
December 31, 2024

SERIAL BONDS:

General Obligation	13,219,095.00
Electric/Waterworks/S.Util.--Refunding	3,355,000.00
Public Building Commission Revenue Bonds	510,000.00
TOTAL SERIAL BONDS	17,084,095.00

TEMPORARY NOTES

Temporary Notes	0.00
TOTAL TEMPORARY NOTES	0.00

LEASE-PURCHASE AGREEMENT:

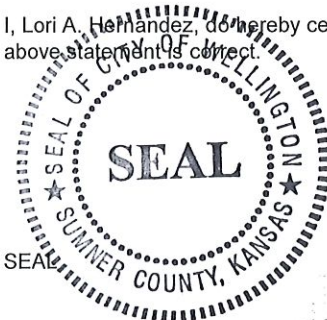
RCB Bank	39,691.10
RCB Bank	102,168.20
RCB Bank	213,598.56
BOC Bank	1,165,511.31
RCB Bank	99,128.89
US Bancorp	33,405.05
Impact Bank	2,432.32
Impact Bank	30,008.25
Impact Bank	50,088.57
Impact Bank	125,598.17
TOTAL LEASES	1,861,630.42

LOANS

State Revolving Fund Loan	475,957.66
TOTAL LOANS	475,957.66

TOTAL LIABILITIES & OBLIGATIONS 19,421,683.08

I, Lori A. Hernandez, do hereby certify that the above statement is correct.



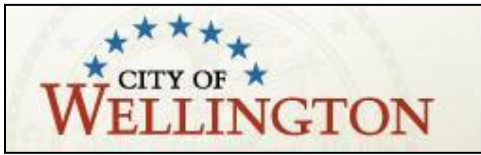
SIGNED

Lori Hernandez
City Treasurer

ATTEST

Heidi Johnson

City Clerk



Memorandum

To: Honorable Mayor and Council
From: Heidi Theurer, City Clerk/Finance Manager
Date: February 4, 2025
Re: Board/Commission Appointments for 2025 Annual Process

The following memo lists the positions that are expiring April 30, 2025. All appointed positions are 4-year terms which begin May 1, 2025 unless stated differently.

Airport Advisory – 1 position- may be City resident or non-resident

[Katie Church – incumbent](#)

Board of Zoning Appeals– 1 position - must be City resident

[Vacant](#)

Combined Trade Board – Contractors: (8 total) – 1 Building; 1 Electrical, 2 Mechanical; 2 Plumbing; 2 Resident-at-large

[1 Building Contractor – expires in 2029](#)
[1 Electrical Contractor – expires in 2029](#)
[2 Mechanical Contractors – 1 expires in 2027 and 1 expires in 2029](#)
[2 Plumbing Contractors – 1 expires in 2027 and 1 expires in 2029](#)
[2 Resident-at-large – both expire in 2028](#)

Health Care Authority– 2 positions- must be City resident

[Cecelia Newman – incumbent](#)
[Vacant](#)

Library Board - 2 positions, must be City resident

[\(2\) Vacancies](#)

Memorial Auditorium Board - 2 positions, 1 must be City resident

[Mark Green – incumbent](#)
[Vacant](#)

Park Board - 1 positions, must be City resident

[Vacant](#)

Planning Commission– 1 position - must be City resident

[Vacant](#)

For questions, please contact Heidi Theurer, City Clerk via email at heiditheurer@cityofwellington.net or via phone 620-326-2811.



Memorandum

To: Honorable Mayor & Council
From: Jeff Porter, City Manager
Date: January 31, 2025
Re: Pool Improvement Financing

At its last meeting, the Council approved the base bid and alternate from Dondlinger and Sons for repairs to the pool systems and a new splash pad. The costs, as bid, for the project are \$1,529,800. As part of the approval process, staff was directed to look at financing options. Staff and the Financial Advisor recommend using authority under Charter Ordinance 32 to issue capital improvement bonds supporting the project.

Ranson Financial, the City's financial advisor, indicates that communities are seeing rates of 4.65-5.00 percent. Based on a 15-year issue with an interest rate of 4.75 percent, the City would have an annual payment in the range of \$150,000. A mill for the 2025 Fiscal Year generates \$51,422. Covering the annual debt service would require 2.90-3.00 mills of property tax, depending on final rates and issuance costs. As structured in the attachments, the first payment

Bond counsel and our financial advisor have drafted the attached resolution to begin issuing bonds to cover the construction costs. You may notice that the bond amount exceeds the project costs, providing for the design and inspection costs, change orders, ancillary fees, and expenses associated with debt issuance in the resolution.

Adopting the resolution will not obligate the City to issue the total amount of the debt. As staff and our advisory partners move forward, we will have more clarity on any additional costs before an offering statement is circulated.

Respectfully submitted,

Jeff Porter
City Manager

RESOLUTION NO. []

A RESOLUTION AUTHORIZING CERTAIN IMPROVEMENTS TO A SWIMMING POOL IN THE CITY OF WELLINGTON, KANSAS; AND AUTHORIZING THE ISSUANCE OF GENERAL OBLIGATION BONDS OF THE CITY TO PAY SUCH COSTS.

WHEREAS, K.S.A. 14-570 and K.S.A. 14-571, as amended by Charter Ordinance No. 32 of the City of Wellington, Kansas (the “City”) (enacted pursuant to the provisions of Section 5(c) of Article 12 of the Constitution of the State of Kansas) and K.S.A. 12-101 *et seq.* (collectively the “Act”), provides that whenever the Governing Body of the City has approved a master capital improvements plan (the “Plan”) for the physical development of the City within the boundaries of the City, including the acquisition of land necessary therefore, the acquisition of equipment, vehicles or other personal property to be used in relation thereto, and may provide for assumption and payment of benefit district indebtedness heretofore created for public improvements, and which Plan may require a number of years to execute, and such Plan is approved by the Governing Body, the City is hereby authorized to issue its general obligation bonds (the “Bonds”) in an amount sufficient to carry out such Plan and associated costs; and

WHEREAS, the Plan includes or does hereby include the construction and acquisition of City swimming pool repairs and improvements (the “Improvements”); and

WHEREAS, the Governing Body of the City determines it advisable to provide for the payment of costs of the Improvements, as provided by the Act.

THEREFORE, BE IT RESOLVED BY THE GOVERNING BODY OF THE CITY OF WELLINGTON, KANSAS:

SECTION 1. Project Authorization. The Improvements are hereby authorized, ordered and directed, at an estimated cost, including financing costs, of \$1,595,000.

SECTION 2. Bond Authorization. Costs of the Improvements and associated financing costs shall be payable, in whole or in part, by the issuance of general obligation bonds of the City (the “Bonds”) under the provisions of the Act.

SECTION 3. Effective Date. This Resolution shall take effect and be in force from and after its adoption. This Resolution shall not be subject to any publication, petition in opposition or election under the Act.

[BALANCE OF THIS PAGE INTENTIONALLY LEFT BLANK]

ADOPTED by the Governing Body of the City of Wellington, Kansas on February 4, 2025.

Mayor

(SEAL)

ATTEST:

Clerk

Draft Time Table of Events

**City of Wellington
General Obligation Bonds, Series 2025
(Swimming Pool Rehab)**

(City regular meetings are 1st, 3rd Tuesday, 6:30 pm)

<u>Activity</u>	<u>Date</u>
Ranson distributes draft Plan of Finance	1/29/2025
Gilmore and Bell provides draft documents to the City	1/31/2025
City approves resolution authorizing bond sale	2/4/2025
Ranson distributes draft POS for comments	2/4/2025
Comments due to Ranson on POS	2/11/2025
Ranson distributes Bid Documents	2/18/2025
Gilmore and Bell provides draft documents to the City	2/27/2025
City approves best bid (and bond ordinance and resolution)	3/4/2025
Closing (Funds Available)	3/25/2025

City of Wellington, Kansas

\$1,595,000

GO Bonds, Series 2025 (Swimming Pool)

March 25, 2025

Optional Redemption: 9/1/2032

Underwriter Allowance: 2.00%

Sale Date/Time: 03/04/2025 @ 11:00

Debt Service Schedule (ESTIMATED)

Part 1 of 2

Date	Principal	Coupon	Interest	Total P+I	Fiscal Total
03/25/2025	-	-	-	-	-
03/01/2026	-	-	61,777.33	61,777.33	-
09/01/2026	55,000.00	3.650%	33,095.00	88,095.00	-
12/31/2026	-	-	-	-	149,872.33
03/01/2027	-	-	32,091.25	32,091.25	-
09/01/2027	85,000.00	3.700%	32,091.25	117,091.25	-
12/31/2027	-	-	-	-	149,182.50
03/01/2028	-	-	30,518.75	30,518.75	-
09/01/2028	90,000.00	3.750%	30,518.75	120,518.75	-
12/31/2028	-	-	-	-	151,037.50
03/01/2029	-	-	28,831.25	28,831.25	-
09/01/2029	90,000.00	3.800%	28,831.25	118,831.25	-
12/31/2029	-	-	-	-	147,662.50
03/01/2030	-	-	27,121.25	27,121.25	-
09/01/2030	95,000.00	3.850%	27,121.25	122,121.25	-
12/31/2030	-	-	-	-	149,242.50
03/01/2031	-	-	25,292.50	25,292.50	-
09/01/2031	100,000.00	3.900%	25,292.50	125,292.50	-
12/31/2031	-	-	-	-	150,585.00
03/01/2032	-	-	23,342.50	23,342.50	-
09/01/2032	100,000.00	3.950%	23,342.50	123,342.50	-
12/31/2032	-	-	-	-	146,685.00
03/01/2033	-	-	21,367.50	21,367.50	-
09/01/2033	105,000.00	4.000%	21,367.50	126,367.50	-
12/31/2033	-	-	-	-	147,735.00
03/01/2034	-	-	19,267.50	19,267.50	-
09/01/2034	110,000.00	4.100%	19,267.50	129,267.50	-
12/31/2034	-	-	-	-	148,535.00
03/01/2035	-	-	17,012.50	17,012.50	-
09/01/2035	115,000.00	4.150%	17,012.50	132,012.50	-
12/31/2035	-	-	-	-	149,025.00
03/01/2036	-	-	14,626.25	14,626.25	-
09/01/2036	120,000.00	4.250%	14,626.25	134,626.25	-
12/31/2036	-	-	-	-	149,252.50
03/01/2037	-	-	12,076.25	12,076.25	-
09/01/2037	125,000.00	4.300%	12,076.25	137,076.25	-
12/31/2037	-	-	-	-	149,152.50
03/01/2038	-	-	9,388.75	9,388.75	-
09/01/2038	130,000.00	4.500%	9,388.75	139,388.75	-
12/31/2038	-	-	-	-	148,777.50
03/01/2039	-	-	6,463.75	6,463.75	-
09/01/2039	135,000.00	4.650%	6,463.75	141,463.75	-
12/31/2039	-	-	-	-	147,927.50

City of Wellington, Kansas

\$1,595,000

GO Bonds, Series 2025 (Swimming Pool)

March 25, 2025

Debt Service Schedule (ESTIMATED)

Part 2 of 2

Date	Principal	Coupon	Interest	Total P+I	Fiscal Total
03/01/2040	-	-	3,325.00	3,325.00	-
09/01/2040	140,000.00	4.750%	3,325.00	143,325.00	-
12/31/2040	-	-	-	-	146,650.00
Total	\$1,595,000.00	-	\$636,322.33	\$2,231,322.33	-

Yield Statistics

Bond Year Dollars	\$14,801.17
Average Life	9.280 Years
Average Coupon	4.2991363%
Net Interest Cost (NIC)	4.5146599%
True Interest Cost (TIC)	4.5474079%
Bond Yield for Arbitrage Purposes	4.2727213%
All Inclusive Cost (AIC)	4.8348872%

IRS Form 8038

Net Interest Cost	4.2991363%
Weighted Average Maturity	9.280 Years

City of Wellington, Kansas

\$1,595,000

GO Bonds, Series 2025 (Swimming Pool)

March 25, 2025

Sources & Uses

Dated 03/25/2025 | Delivered 03/25/2025

Sources Of Funds	
Par Amount of Bonds	\$1,595,000.00
Total Sources	\$1,595,000.00
Uses Of Funds	
Total Underwriter's Discount (2.000%)	31,900.00
Costs of Issuance	32,438.00
Deposit to Project Construction Fund	1,529,800.00
Rounding Amount	862.00
Total Uses	\$1,595,000.00

COSTS OF ISSUANCE DETAIL

Municipal Advisor - Ranson Financial	\$11,500.00
Bond Counsel - Gilmore & Bell	\$15,100.00
POS/Official Statement - Ranson Financial	\$2,800.00
Paying Agent (State Treasurer)	\$2,330.00
CUSIP fee	\$458.00
Attorney General	\$250.00
TOTAL	\$32,438.00

RESOLUTION NO. [_____]

A RESOLUTION AUTHORIZING THE OFFERING FOR SALE OF GENERAL OBLIGATION BONDS, SERIES 2025, OF THE CITY OF WELLINGTON, KANSAS.

WHEREAS, the City of Wellington, Kansas (the “Issuer”), pursuant to Article 12, Section 5 of the Kansas Constitution, K.S.A. 12-101 and Charter Ordinance No. 32 of the Issuer, has previously authorized certain improvements described as follows (the “Improvements”):

<u>Project Description</u>	<u>Res. No.</u>	<u>Authority (K.S.A.)</u>	<u>Amount</u>
Swimming pool rehabilitation improvements	[_____]	Charter Ordinance No. 32 of the Issuer	\$1,595,000

WHEREAS, the Issuer desires to issue its general obligation bonds in order to permanently finance the costs of such Improvements; and

WHEREAS, the Issuer proposes to issue its general obligation bonds to pay the costs of the Improvements; and

WHEREAS, the City Council of the Issuer (the “Governing Body”) hereby selects the firm of Ranson Financial Group LLC, Wichita, Kansas (the “Financial Advisor”), as financial advisor for one or more series of general obligation bonds of the Issuer to be issued in order to provide funds to permanently finance the Improvements; and

WHEREAS, the Issuer desires to authorize the Financial Advisor to proceed with the offering for sale of said general obligation bonds and related activities; and

WHEREAS, one of the duties and responsibilities of the Issuer is to prepare and distribute a preliminary official statement relating to said general obligation bonds; and

WHEREAS, the Issuer desires to authorize the Financial Advisor and Gilmore & Bell, P.C., Wichita, Kansas, the Issuer’s bond counsel (“Bond Counsel”), in conjunction with the City Manager, to proceed with the preparation and distribution of a preliminary official statement and notice of bond sale and to authorize the distribution thereof and all other preliminary action necessary to sell said general obligation bonds.

BE IT RESOLVED BY THE CITY COUNCIL OF THE CITY OF WELLINGTON, KANSAS, AS FOLLOWS:

Section 1. There is hereby authorized to be offered for sale the Issuer’s General Obligation Bonds, Series 2025 (the “Bonds”) described in the Notice of Bond Sale, which is hereby approved in substantially the form presented to the Governing Body this date (the “Notice of Bond Sale”). All proposals for the purchase of the Bonds shall be delivered to the Governing Body at its meeting to be held on the sale date referenced in the Notice of Bond Sale, at which meeting the Governing Body shall review such bids and award the sale of the Bonds or reject all proposals.

Section 2. The Mayor and City Manager, in conjunction with the Financial Advisor and Bond Counsel are hereby authorized to cause to be prepared a Preliminary Official Statement relating to the

Bonds (the “Preliminary Official Statement”), and such officials and other representatives of the Issuer are hereby authorized to use such document in connection with the sale of the Bonds.

Section 3. The Clerk, in conjunction with the Financial Advisor and Bond Counsel, is hereby authorized and directed to give notice of said bond sale by publishing a Notice of Intent to Seek Private Placement before the date of the bond sale in a newspaper of general circulation in Sumner County, Kansas, and the *Kansas Register* and by distributing copies of the Notice of Bond Sale and Preliminary Official Statement to prospective purchasers of the Bonds. Proposals for the purchase of the Bonds shall be submitted upon the terms and conditions set forth in the Notice of Bond Sale, and awarded or rejected in the manner set forth in the Notice of Bond Sale.

Section 4. For the purpose of enabling the purchaser of the Bonds (the “Purchaser”) to comply with the requirements of Rule 15c2-12 of the Securities and Exchange Commission (the “Rule”), the Mayor and City Manager are hereby authorized: (a) to approve the form of the Preliminary Official Statement and to execute the “Certificate Deeming Preliminary Official Statement Final” in substantially the form attached hereto as *Exhibit A* as approval of the Preliminary Official Statement, such official’s signature thereon being conclusive evidence of such official’s and the Issuer’s approval thereof; (b) covenant to provide continuous secondary market disclosure by annually transmitting certain financial information and operating data and other information necessary to comply with the Rule to the Municipal Securities Rulemaking Board; and (c) take such other actions or execute such other documents as such officers in their reasonable judgment deem necessary to enable the Purchaser to comply with the requirement of the Rule.

Section 5. The Issuer agrees to provide to the Purchaser within seven business days of the date of the sale of Bonds or within sufficient time to accompany any confirmation that requests payment from any customer of the Purchaser, whichever is earlier, sufficient copies of the final Official Statement to enable the Purchaser to comply with the requirements of the Rule and with the requirements of Rule G-32 of the Municipal Securities Rulemaking Board.

Section 6. The Mayor, City Manager, Clerk and the other officers and representatives of the Issuer, the Financial Advisor and Bond Counsel are hereby authorized and directed to take such other action as may be necessary to carry out the sale of the Bonds.

The transactions described in this Resolution may be conducted, and documents related to the Bonds may be sent, received, executed, and stored, by electronic means or transmissions. Copies, telecopies, electronic files and other reproductions of original executed documents (or documents executed by electronic means or transmissions) shall be deemed to be authentic and valid counterparts of such documents for all purposes, including the filing of any claim, action or suit in the appropriate court of law.

Section 7. This Resolution shall be in full force and effect from and after its adoption by the Governing Body.

[BALANCE OF THIS PAGE INTENTIONALLY LEFT BLANK]

ADOPTED by the City Council on February 4, 2025.

(SEAL)

Mayor

ATTEST:

Clerk



Building & Codes Department
317 South Washington
Wellington, KS 67152
Ph#620-326-3871

TO : Wellington City Council
FROM: Jamie Cornejo, Building Official
RE: 514 South F Street - Progress Memo
DATE: January 31, 2025

On January 7, 2025, City Building & Codes Department presented a Resolution to Abate regarding the conditions of the property located at 514 South F. After the Public Hearing was held, the Governing Body made the motion to table the resolution and granted a 60 day period to the owner to repair the residence and bring the property back into city compliance. At this same hearing, the Governing Body directed City Staff to provide a progress report after 30 days and present the findings. Repairs that needed to be addressed.

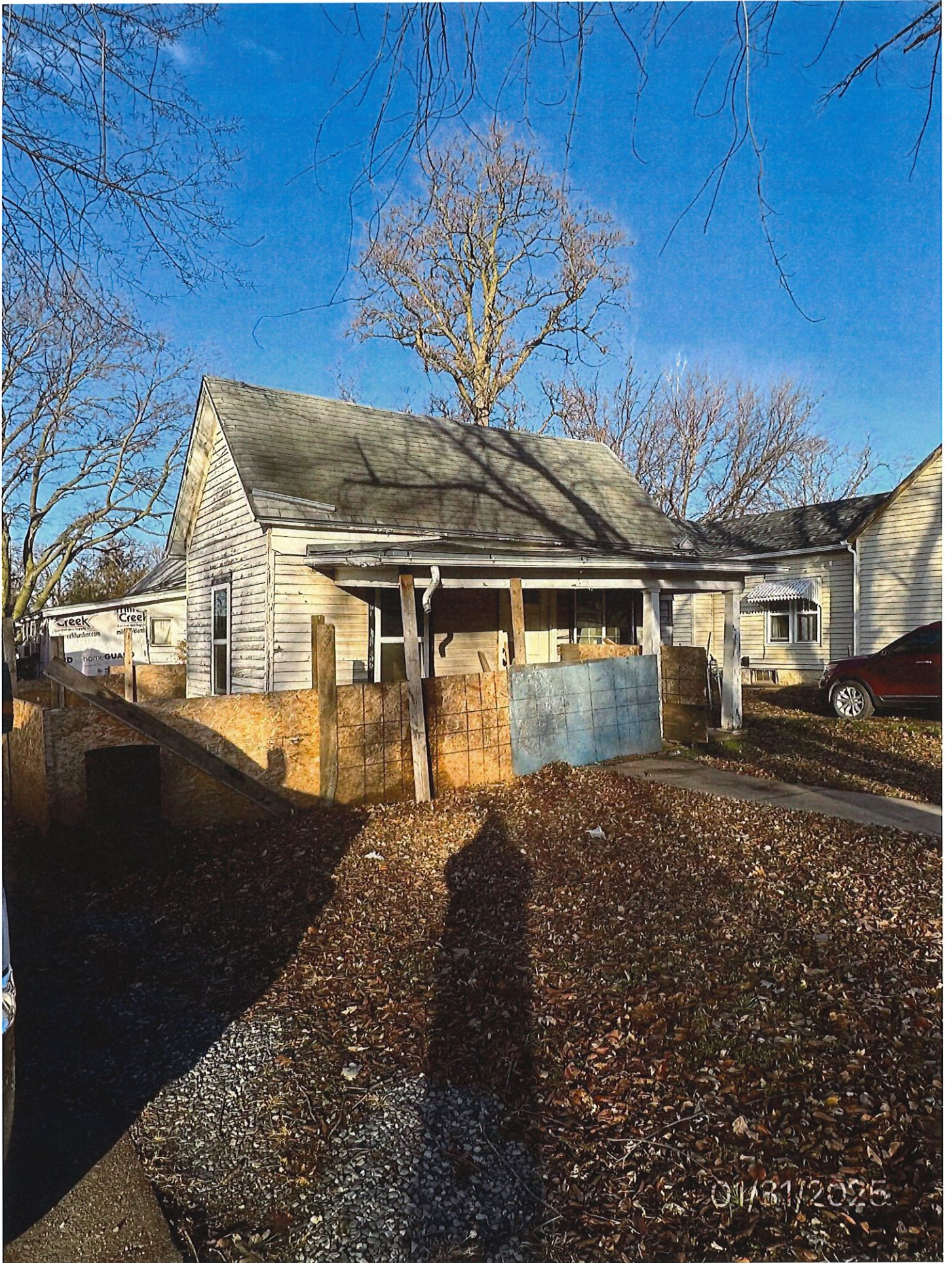
1. The foundation of the residence needs repaired and dirt excavation filled in.
2. The front porch roof needs to be repaired and made structurally sound.
3. Weather Proof Siding install needs to be completed. North side of structure completely exposed.
4. The driveway approach needs to be replaced. Current conditions allow water penetration underneath the street.

A re-inspection of the property was conducted on January 30th and noted that most, if not all, the original repairs brought forth during the hearing on January 7th have not been addressed. Some clean-up activity has been noted on the adjacent property that the owner owns, but current conditions remain the same with no change at this current time.

Respectfully Submitted,

Jamie Cornejo
Building Official
City of Wellington





01/31/2025



RESOLUTION NO.

A RESOLUTION FINDING THAT THE STRUCTURE LOCATED ON BLOCK 93, LOT(S) 7, S10' OF 6 & N20' 8, ORIGINAL TOWN, CITY OF WELLINGTON, SUMNER COUNTY, KANSAS. COMMONLY KNOWN AS 514 SOUTH F STREET IS UNSAFE OR DANGEROUS AND DIRECTING THE STRUCTURE TO BE MADE SAFE AND SECURE OR REMOVED

WHEREAS, the Enforcing Officer of the City of Wellington, Kansas, did on the 3rd day of December 2024, file with the Governing Body of said City a statement in writing that a certain structure, hereinafter described, was unsafe and dangerous; and

WHEREAS, the Governing Body did by Resolution dated the 3rd day of December 2024, fix the time and place of a hearing at which the owner, his agent, any lien holders of record and any occupant of such structure could appear and show cause why such structure should not be condemned and ordered repaired or demolished, and provided for giving notice thereof as provided by law; and

WHEREAS, such Resolution was published in the official City newspaper on the 12th day of December 2024.

WHEREAS, on the 4th day of February 2025, this matter came back before the Governing Body for a hearing to determine whether the structure on the premises described herein is a dangerous building within the terms of Section 108, of the 2015 Property Maintenance Code (amended) of the City of Wellington, Kansas, and/or K.S.A. 12-1750, et. seq.

NOW, THEREFORE, BE IT RESOLVED BY THE GOVERNING BODY OF THE CITY OF WELLINGTON, KANSAS AS FOLLOWS:

Section 1. The Governing Body, after hearing testimony submitted by the Staff and owner and by other interested parties, reviewing the file, and after being otherwise duly and fully informed, finds as follows:

- (a) Proper notice was served upon all interested parties entitled thereto in all respects as provided for in K.S.A. 12-1750 et. seq. and by Section 107 of the 2015 Property Maintenance Code (amended) of Wellington, Kansas.
- (b) The primary structure at issue is: 514 South F Street
Primary Residence: The property remains vacant and in disrepair. The primary residence has been deemed dangerous and unsafe due to excavation for foundation repair, but has yet to be completed. Front Porch roof line appears to be sagging due to foundation problems with roof coverings appearing to be in distress. Front egress entry is inaccessible due to the excavation. Photographs of the structure and testimony of the Staff are incorporated by reference herein as though fully set forth herein or attached hereto.
- (c) The owner of record of the property is: Jesus & Mechelle Lozano
There is nobody occupying the property and the lien holder of record is:
Mortgage Holders: N/A
Agent(s): N/A
Interested Parties: N/A
- (d) The structure on the property is found to be dangerous and unsafe and is found to constitute a public nuisance because of the following conditions:
 - 1. Foundation problems and open excavation near the foundation that has not been properly shored up and open for a considerable amount of time. Foundation issues causing sagging on the front porch and roof issues

2. Missing and boarded up windows and doors
3. The general conditions of the premises for an extended period of time with no recent effort to make it unfit for human habitation.
4. Those, which have been damaged by fire, wind, want of repair, or other causes, so as to have become dangerous to life, safety, morals or the general health and welfare of the occupants or the people of the City.
5. The structure fails to provide the necessities to decent living, which makes it unfit for human habitation.

Based upon the findings set out above, the structure is declared to constitute a public nuisance.

Section 2. The Governing Body, based on the findings set forth herein orders that the structure is hereby condemned:

- (a) The Governing Body hereby directs that the structure is to be repaired or removed and the premises made safe and secure. Any extensions of time granted for repairs are provided that any back taxes are paid, the structure is/are kept secured and the premises remain free of debris and maintained. If any of these conditions are not met, Staff is directed to let the structures for bids for demolition. The owner (owners) of such structure/s is/are hereby given thirty (30) days from the date of publication of Resolution to complete repair of said structures.
- (b) The Governing Body further directs that if such owner (owners) fails/fail to complete the repair of such structure within the time stated or fails to diligently prosecute the same until the work is completed, then the City Manager will cause the structures to be razed and removing, less salvage value, if any, shall be assessed as a special assessment against the lot or parcel of land upon which the structure is/are located as provided by law.

Section 3. The Governing Body, after hearing testimony submitted by the Staff and owner and by other interested parties, reviewing the file, and after being otherwise duly and fully informed, finds as follows:

- (a) The Governing Body hereby directs that the drive approach and damage to public such as curb and gutter infrastructure in rights-of-way be repaired and maintained as adopted in the standard design documents of the City. If any of these conditions are not met, Staff is directed to let the repairs for bids. The owner (owners) of the parcel adjoining the damaged infrastructure is/are hereby given thirty (30) days from the date of publication of Resolution to complete repair of said structures.
- (b) The Governing Body further directs that if such owner (owners) fails/fail to complete the repair of such structure within the time stated or fails to diligently prosecute the same until the work is completed, then the City Manager will cause the structures to be repaired and costs, shall be assessed as a special assessment against the lot or parcel of land upon which the infrastructure is/are located as provided by law.

BE IT FURTHER RESOLVED, that the City Clerk shall cause this Resolution to be published once in the official City newspaper and a copy shall be mailed by certified mail to the owners, agents, lien holders and occupants within three (3) days after the first publication of the Resolution.

APPROVED AND ADOPTED at Wellington, Kansas, this 4th day of February 2025.

Joe Soria, Mayor

(SEAL)

ATTEST:

Heidi Theurer City Clerk

FORM APPROVED:

Shawn R. DeJarnett, City Attorney

Proposed Resolutions for Consideration

KPP Energy continues to seek funding and tax credits for its solar project under the Powering Affordable Clean Energy (PACE) Act. Two proposed resolutions are presented for your consideration.

1. Establishing a Qualified Low-Income Economic Benefit Program

This resolution aims to create a qualified low-income economic benefit program for the solar facility. If adopted, KPP will apply for a 20% tax credit on the installed solar facility. If awarded the credit, KPP will calculate and allocate funds to your entity annually for five (5) years. The amount provided will be 50% of the cost difference between generating solar energy at your facility and purchasing equivalent energy per kWh. These funds will be distributed by your entity to program customers identified through the Low-Income Energy Assistance Program. The first credit distribution is expected in 2027, approximately one year after project completion.

2. Confirming No Interconnection Agreement Requirement

This resolution affirms that no interconnection agreement is necessary for the solar facility. The tax credit bonus application requires an interconnection agreement or confirmation that one is not needed. KPP Energy has conducted an interconnection study with your system, which determined that no agreement is required. Adoption of this resolution will fulfill the application's requirements.

We appreciate your consideration of these resolutions as we advance this solar project.

RESOLUTION NO. _____

**A RESOLUTION OF THE CITY OF WELLINGTON, KANSAS,
DETERMINING THE ADVISABILITY OF ESTABLISHING A
QUALIFIED LOW-INCOME ECONOMIC BENEFIT PROGRAM FOR
THE SOLAR FACILITY.**

WHEREAS, the governing body of the City of Wellington, Kansas (the “City”) has considered the need of the City and its residents for an approximately 4.9 MW solar generation facility (the “Solar Facility”) in order to provide a local source of energy for the City and reduce the City’s exposure to pricing volatility in the energy markets, and has found and determined that the acquisition of the Facility is in the public interest; and

WHEREAS, Section 13103 of Public Law 117-169, 136 Stat. 1818 (August 16, 2022), commonly known as the Inflation Reduction Act of 2022 (“IRA”), allows for a potential increase in the amount of the energy investment credit with respect to eligible property that is part of a qualified solar facility; and

WHEREAS, the amount of energy investment credit may increase by 20 percentage points if the Solar Facility is determined by the IRS to be part of a qualified low-income economic benefit project as described in section 3.04 of IRS Notice 2023-17; and

WHEREAS, the value of the increased energy investment credit to the Solar Facility owner, KPP Energy, is approximately \$500,000; and

WHEREAS, the Treasury Department and Internal Revenue Service (“IRS”) opened the 2025 credit application window for allocation of qualified low-income economic benefit project bonus credits (“LMI Bonus Credits”) with an initial 30-day period ending at 11:59 p.m. Eastern Time on February 14, 2025.

NOW, THEREFORE, BE IT RESOLVED BY THE GOVERNING BODY OF THE CITY OF WELLINGTON, KANSAS;

Section 1. Authorization to Establish a Qualified Low-Income Economic Benefit Project. The City Manager is hereby authorized to complete final plans for the establishment of a program (“Qualified LI Program”) that will satisfy the requirements for the Solar Facility to be a Qualified Low-Income Economic Benefit Project and to apply for allocation of bonus energy investment credits with the Treasury Department.

Section 2. Qualified LI Program. The Qualified LI Program will give at least fifty percent (50%) of the financial benefits of the electricity produced by the Solar Facility to qualified Low-To-Moderate Income households (“LMI Households”) in the form of electricity acquired at a below-market rate. The program will have a term of five (5) years.

The program will (1) maintain a list of qualified LMI Households and update the list in the fourth calendar quarter of each year, then (2) in the first calendar quarter of each year, calculate

the financial benefits to the City of the Solar Facility over the prior year, and (3) apply a credit to the electricity bill of each registered qualified LMI Household so that in aggregate, at least fifty percent (50%) of the financial benefits of the Solar Facility are designated to LMI Households. The Solar Facility financial benefits will be calculated as the avoided cost of electricity purchases from the grid minus the operating and financing costs of the Solar Facility. The program and Solar Facility will meet all requirements listed under Category 4 projects in Section 7 and Section 10 of IRS Revenue Procedure 2023-27. The granting of the electricity credits to be applied to LMI Households pursuant to the Qualified LI Program will be subject to KPP Energy's granting of credits to the City in the same amount with respect to the City's purchase of power from KPP Energy.

Section 3. Qualified LI Program Subject to Allocation of LMI Bonus Credits. The Qualified LI Program will take effect only if the IRS accepts the City's application and notifies the City of an allocation of LMI Bonus Credits. The Qualified LI Program will begin when the Solar Facility is placed in service, as defined in Section 10 of IRS Revenue Procedure 2023-27.

Section 4. Effective Date. This Resolution shall be in full force and effect from and after its adoption.

[Remainder of Page Intentionally Left Blank]

PASSED, ADOPTED AND APPROVED the governing body of the City of Wellington, Kansas, this 4th day of February, 2025.

CITY OF WELLINGTON, KANSAS

[seal]

Joe Soria, Mayor

ATTEST:

Heidi Theurer, City Clerk

EXCERPT OF MINUTES

The governing body of the City of Wellington, Kansas met in regular session, at the usual meeting place in the City on February 4, 2025, at 6:30 p.m., with Mayor Joe Soria presiding, and the following members of the governing body present:

and the following members absent:

Thereupon, there was presented a Resolution entitled:

**A RESOLUTION OF THE CITY OF WELLINGTON, KANSAS,
DETERMINING THE ADVISABILITY OF ESTABLISHING A
QUALIFIED LOW-INCOME ECONOMIC BENEFIT PROGRAM FOR
THE SOLAR FACILITY.**

Thereupon, the Resolution was considered and discussed; and on motion of _____, seconded by _____, the Resolution was adopted by a majority vote of the members present, it was given No. _____, and directed to be signed by the Mayor and attested by the City Clerk.

CITY CLERK'S
CERTIFICATION OF EXCERPT OF MINUTES

I hereby certify that the foregoing is a true and correct Excerpt of Minutes of the February 4, 2025 meeting of the governing body of the City of Wellington, Kansas.

[seal]

Heidi Theurer, City Clerk

RESOLUTION NO. _____

**A RESOLUTION OF THE CITY OF WELLINGTON, KANSAS,
CONFIRMING NO INTERCONNECTION AGREEMENT IS REQUIRED
FOR THE SOLAR FACILITY.**

WHEREAS, the governing body of the City of Wellington, Kansas (the “City”) has considered the need of the City and its residents for an approximately 4.9 MW solar generation facility (the “Solar Facility”) in order to provide a local source of energy for the City and reduce the City’s exposure to pricing volatility in the energy markets, and has found and determined that the acquisition of the Facility is in the public interest; and

WHEREAS, the governing body has adopted Resolution _____ to establish a qualified low-income economic benefit program for the solar facility; and

WHEREAS, the U.S. Treasury Department, Department of Energy, and Internal Revenue Service (“IRS”) require either an Interconnection Agreement or waiver from the Governing Body in the application for qualified low-income economic benefit project bonus credits (“48(e) Bonus Credits”).

NOW, THEREFORE, BE IT RESOLVED BY THE GOVERNING BODY OF THE CITY OF WELLINGTON, KANSAS:

Section 1. Determination of Interconnection Agreement Applicability. The City is a member of KPP Energy, who prepared an Electric Distribution Solar Impact Study (“Impact Study”) dated January 4, 2024 for the City regarding the impact of the Solar Facility on the City distribution system, concluding “minimal to negligible impact was observed”. Also, regarding the existing City distribution system facilities, “It has been concluded that all equipment can accommodate the additional 1-megawatt (MW) PV installation near the Wellington interconnection Substation. No further enhancements or modifications are required.”

Section 2. 48(e) Bonus Credit Application. As described in Section X.A. Footnote 9 in the IRS final regulations 2023-17078, an interconnection agreement is not applicable to the Solar Facility, as determined by the Governing Body that financially authorized the facility.

Section 3. Effective Date. This Resolution shall be in full force and effect from and after its adoption.

[Remainder of Page Intentionally Left Blank]

PASSED, ADOPTED AND APPROVED the governing body of the City of Wellington, Kansas, this 4th day of February, 2025.

CITY OF WELLINGTON, KANSAS

[seal]

Joe Soria, Mayor

ATTEST:

Heidi Theurer, City Clerk